

Growth / Design Profile



2025

Creation | Execution | Performance | Development | Expression | Experience

EMBRACE CHANGES

CREATE OPPORTUNITIES

Who We Are

01

01 About Us

02 Strategy

03 Broad Geographic

What We Do

02

05 Activities

Growth

Design

How We Do

03

07 Clients

11 Teams

Growth

04

13 GROWTH

Business Creation

MINE 2019

ICS Platform 2021

17 Maanz 2021

21 Abra 2022

Khuzestan Stone 2025

23 Kariz 2025

Himo 2022

Taqaron 2024

27 Wiink 2023

Business Execution

29 Khuzestan Stone 2021

Baft Shahr 2023

33 Business Performance

Taqaron 2022

Business Development

Basilico 2020

Khuzestan Stone 2021

Zagross 2022

Diako 2022

Design

05

43 DESIGN

Experience | Physical

Telecommunication Exhibition 2014

Iran University of Science and Technology 2015

Zarivar Cafe Baar 2016

Science and Technology Park 2016

Cibo 2016

Farahani Residential Apartment 2016

47 House No.01 2017

Indigenous Canadian House 2017

Standard Laboratory 2017

Zaferanie Mall 2017

Mana Collection 2017

Northern Garden Park 2017

Yahyaee House 2018

Plasco 2018

Family House 2018

51 Providential House 2019

Arak Innovation Factory 2019

Karun Collection 2019

55 Basilico 2020

Kumush Collection 2020

Damavand Collection 2020

Era Collection 2021

Experience | Digital

MINE 2019

ICS Platform 2021

Pragmatica 2022

59 Taqaron 2022

Expression | Identity

Badii Leather 2017

MINE 2019

63 Bnon 2019

ICS Platform 2021

65 Khuzestan Stone 2021

69 Boutique Apartment 2021

73 Maanz 2021

77 Kaaj 2022

Yas Beauty Clinic 2024

81 Zagross 2022

Taqaron 2022

Wiink 2023

Expression | Interaction

ICS Platform 2021

Taqaron 2022

Contacts

06

85 Website

Email

Call

Address

ID

Channels

**MINE, where design
and growth come together to
drive your business forward.**

Our team of experts;

specializes in providing comprehensive and innovative **solutions** to help your business thrive.

From architecture design and brand identity to channels design, From business ideation and modeling to business development support, we have the tools and expertise to take your business to the **next level**.

We believe that;

embracing changes and creating opportunities is the key to reach new **heights**.

Let us help you unlock your full potential and bring your vision to **life** together.

Our firm helps bridge the gap between the **present** and the **possible**, what is and what can be.

ABOUT US

STRATEGY

%10 CANADA
EXPERIENCE

%5 USA
EXPRESSION

%15 EUROPE
EXPERIENCE
BUSINESS CREATION
BUSINESS EXECUTION

BROAD
GEOGRAPHIC

EXPERIENCE | EXPRESSION
BUSINESS CREATION
BUSINESS EXECUTION
BUSINESS PERFORMANCE
BUSINESS DEVELOPMENT

IRAN %70

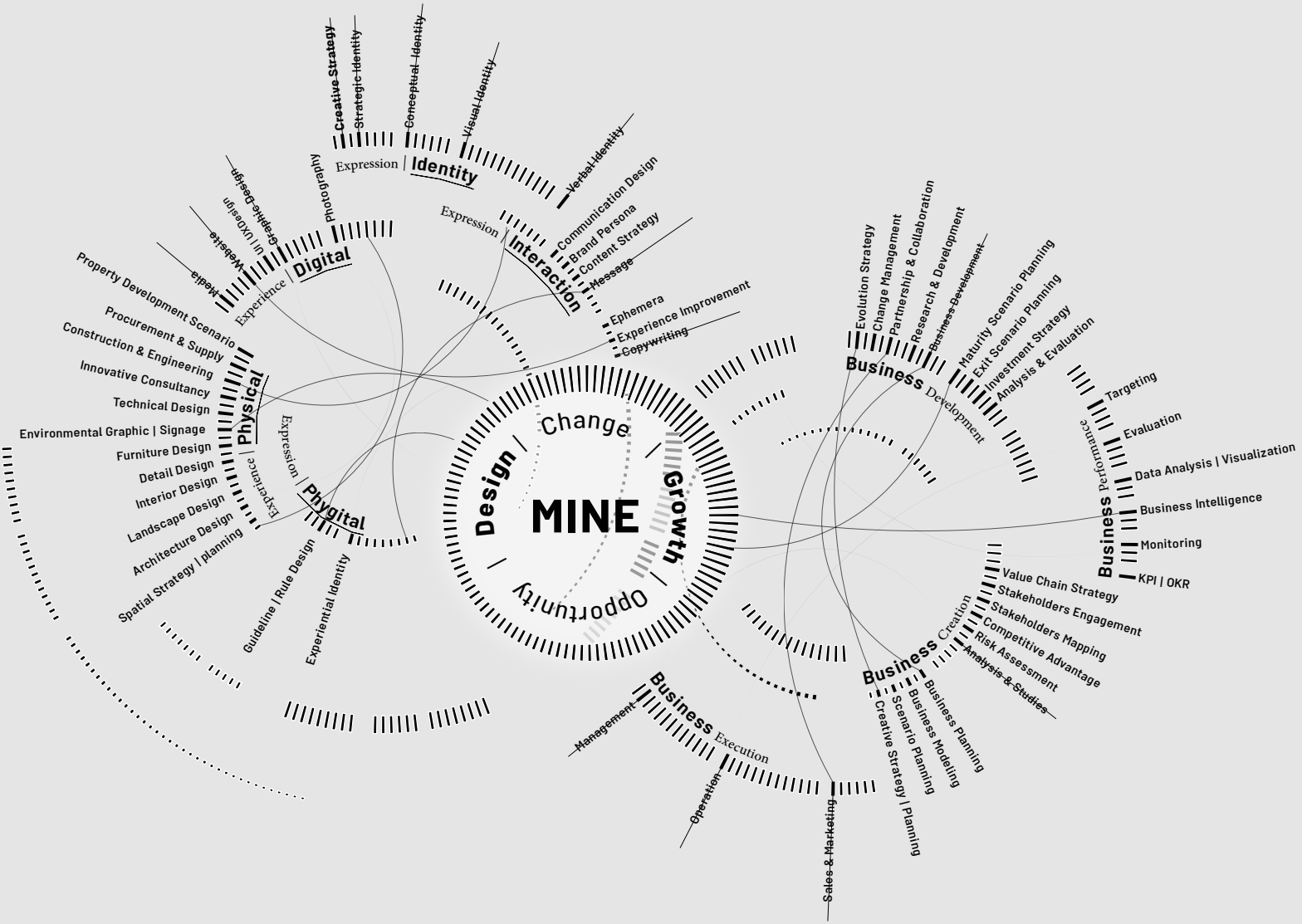


We believe **Design** should be effective, and unforgettable.

Let us help you create a thrilling **experience** and precise **expression** that connects you with your audience.

- Architecture Design
- Environmental Graphic
- Innovative Consultancy
- Website Design
- Graphic Design
- Visual Identity
- Creative Strategy

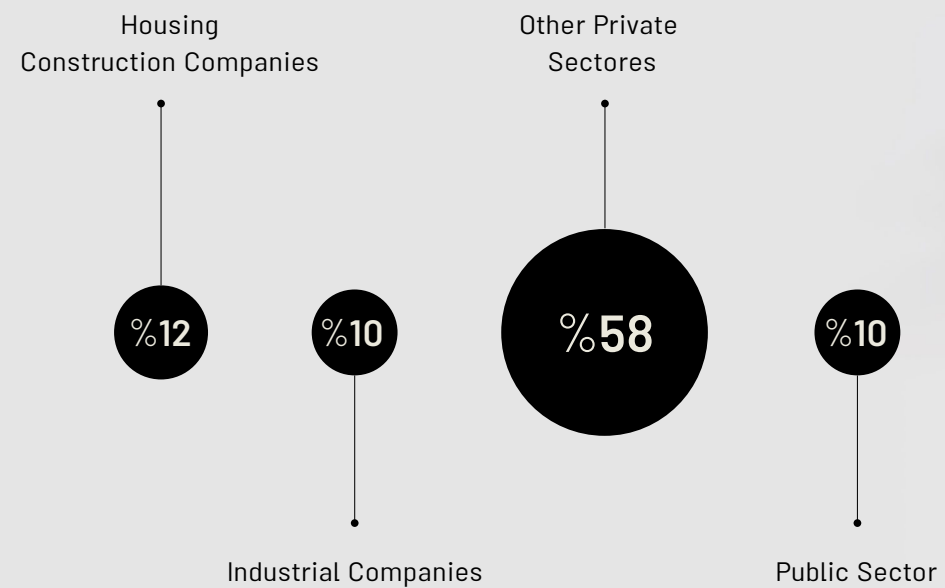
ACTIVITIES



Growth can be a journey, but it doesn't have to be a daunting one.

We're here to help you navigate the path to success with customized **strategies** and expert guidance every step of the way.

- Business Modeling
- Risk Assessment
- Value Chain Strategy
- Management
- Operation
- Business Intelligence
- Investment Strategy



MINE's business model is based on being close to our **clients** and **experts**. We are ready to create value for the clients and partners in design and growth.

CLIENTS

Kariz Investment Management | Baft-E-Shahr Consultant Engineering Company |
Velenjak Boutique Apartment | Taqaron Consultant Engineering Company | Diako
Group | Zagross Food Industry Group | Maanz Gold Studio | Tabriz Municipality
| Arak Municipality Investmnet Organization | Arak Machine Sazi Corporation |
FITT Headquarter | Khuzestan Stone Factory | CIBO Cafe & Restaurant | Science
And Technology Park | Rhyterna Modular | Plat 0.8 | Markazi Standard Labratory
| Graph Business Development Firm |

Clients And Companions

We are a team of inspired and diverse individuals, driven by inclusion and guided by **purpose**.

Our passion for purposeful, sustainable work fuels our commitment to shaping our **communities** and the **future**.

We pride ourselves on our collaborative **approach**, thriving on challenges and unconventional thinking.

Our team is made up of a network of experts who channel our curiosity into creating innovative solutions to complex issues.

Pro-Team Member

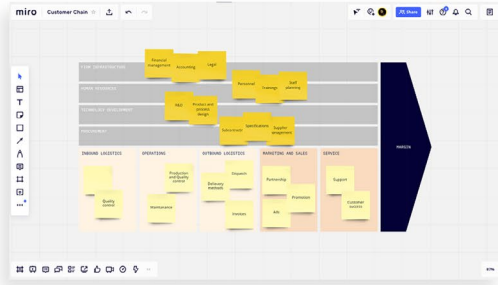
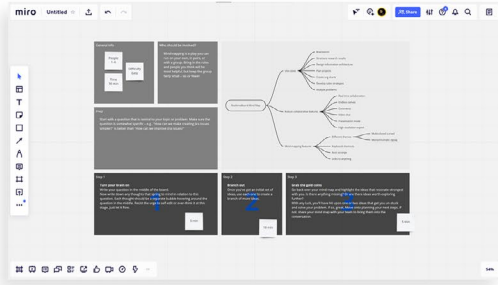
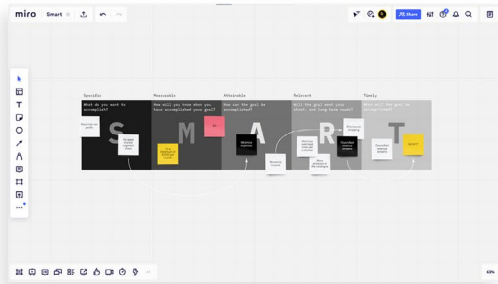
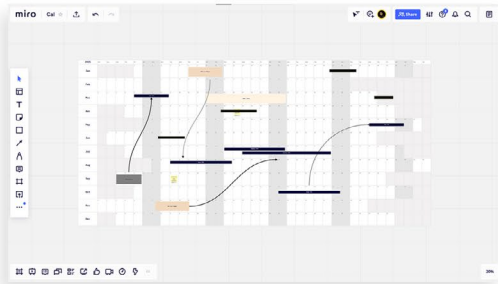
MohamadMahdi SabetFard | Yeganeh Yektaeian

TEAMS



GROWTH





GROWTH

Business **Creation**

We collaborate closely with entrepreneurs to ideate and model businesses that are uniquely tailored to their vision, helping them to bring their ideas to realities.

- Business Modeling
- Business Planning
- Risk Assessment
- Stakeholders Mapping
- Value Chain Strategy

Business **Execution**

We provide end-to-end business plans and support for better execution, allowing businesses to efficiently and effectively execute their strategies, ultimately helping them achieve their goals.

- Management
- Operation
- Sales
- Marketing
- Planning

Business **Performance**

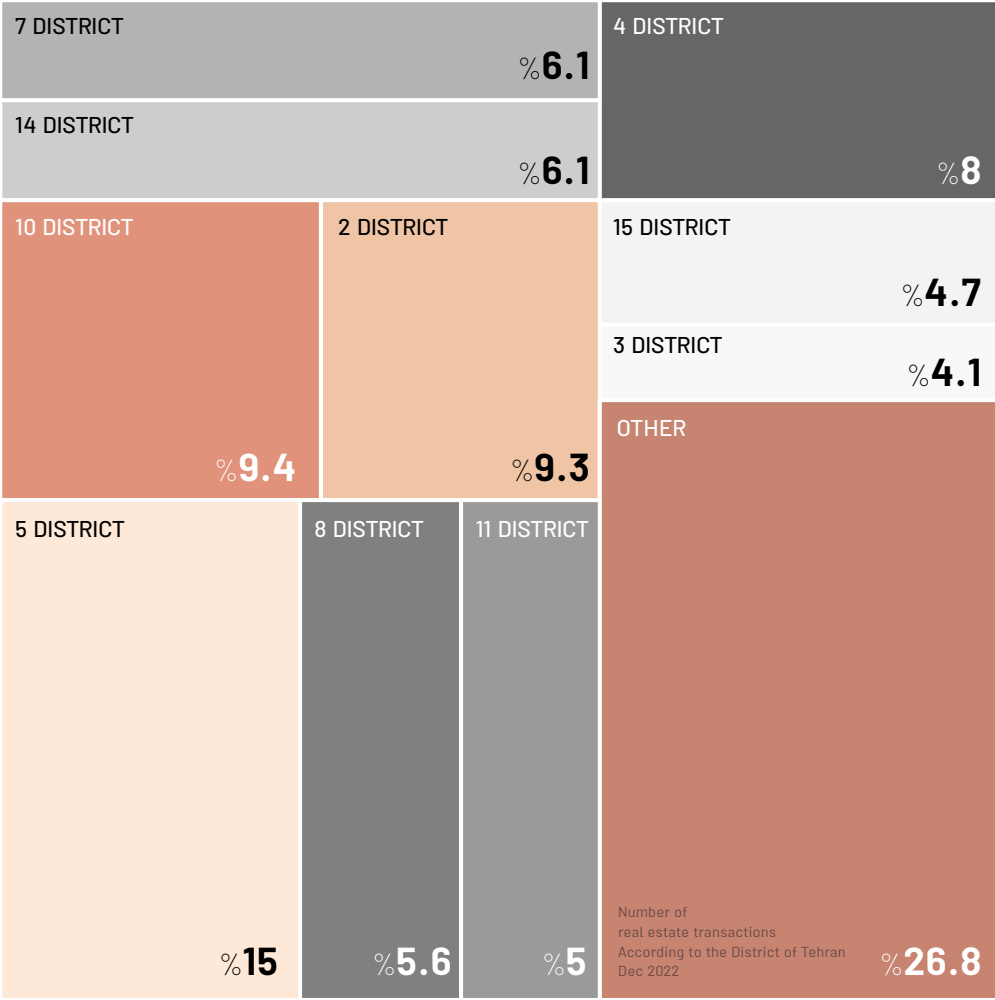
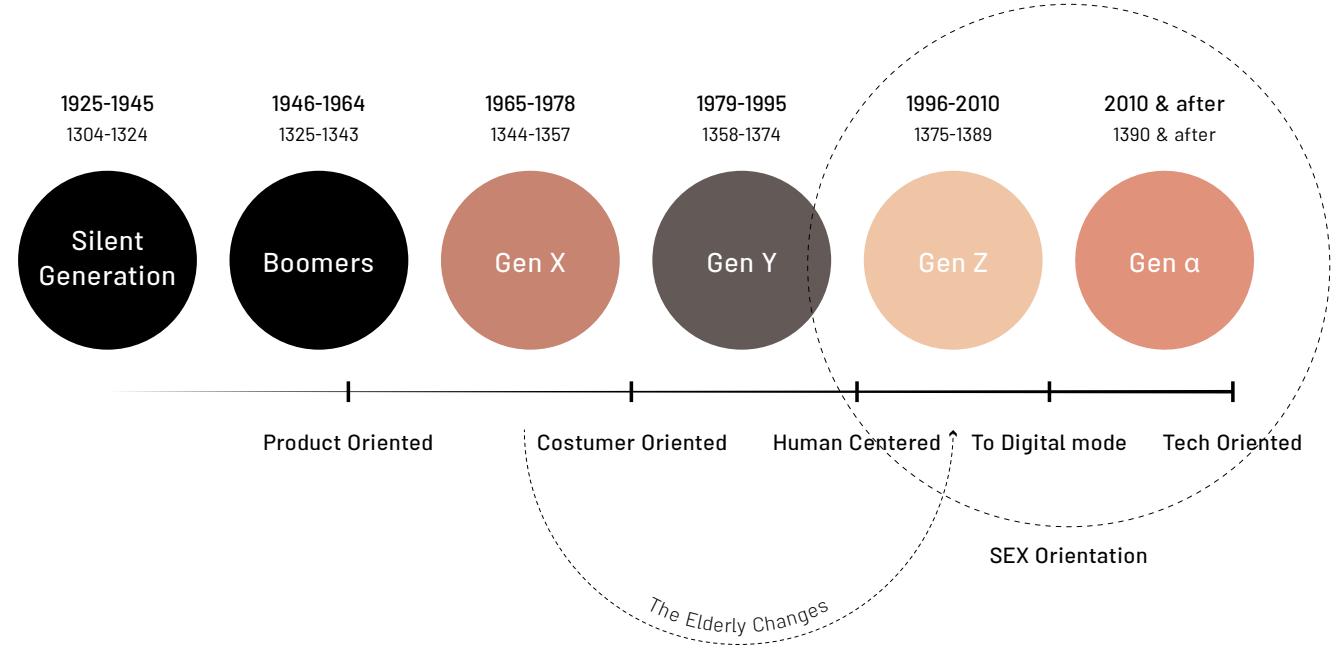
We measure and analyze data to identify areas for improvement, helping businesses to increase their performance, and maximize their profits.

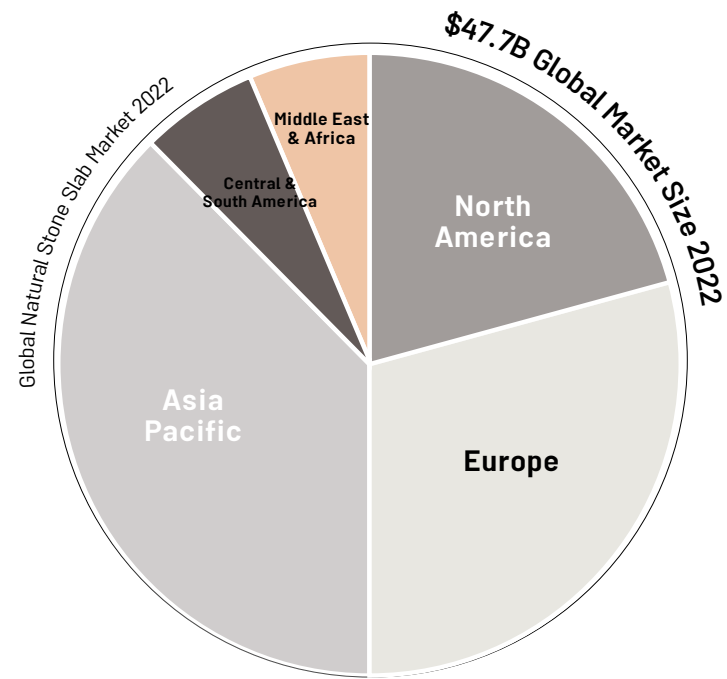
- Data Analysis
- Business Intelligence
- Targeting
- Monitoring
- KPI | OKR

Business **Development**

We facilitate the growth and development of businesses' products or services by providing comprehensive strategic solutions, that covers the entire process from inception to exit strategy.

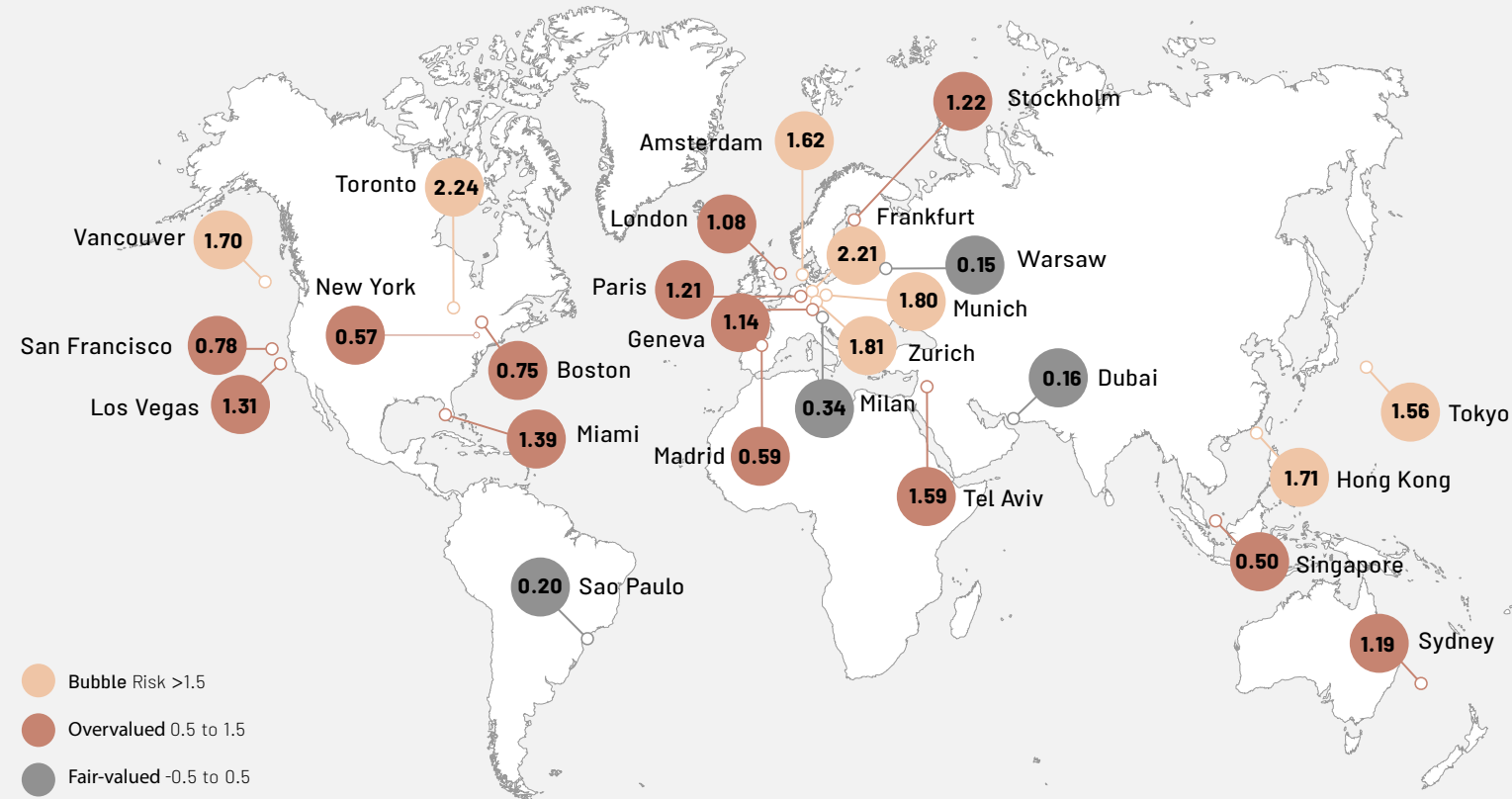
- Change Management
- Business Development
- Investment Strategy
- Exit Scenario Planning
- Analysis & Evaluation





How should I design and implement a creative **marketing** and **sales** plan?





How to create a **scenario** for starting a business?

What are the real business **risks** and how are they **evaluated**?

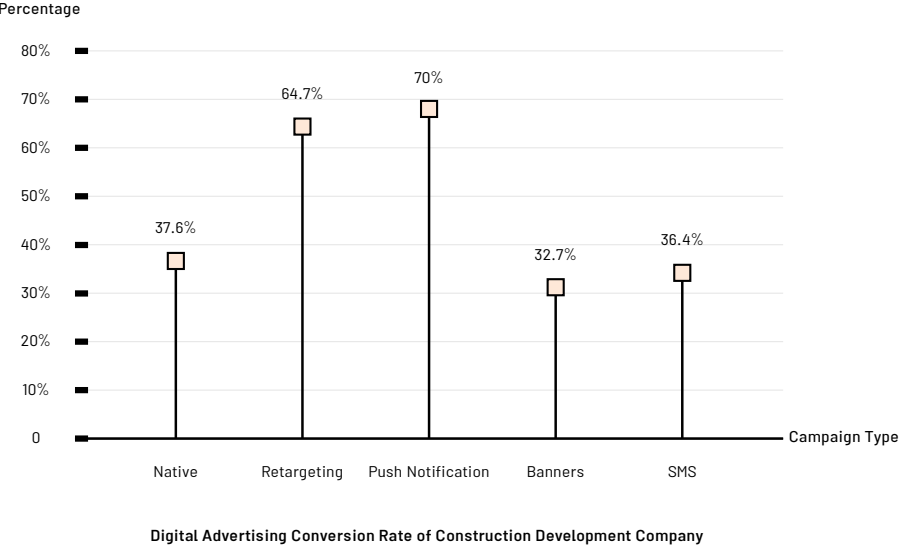
How should I deal with **exit** and **end** of business scenarios?

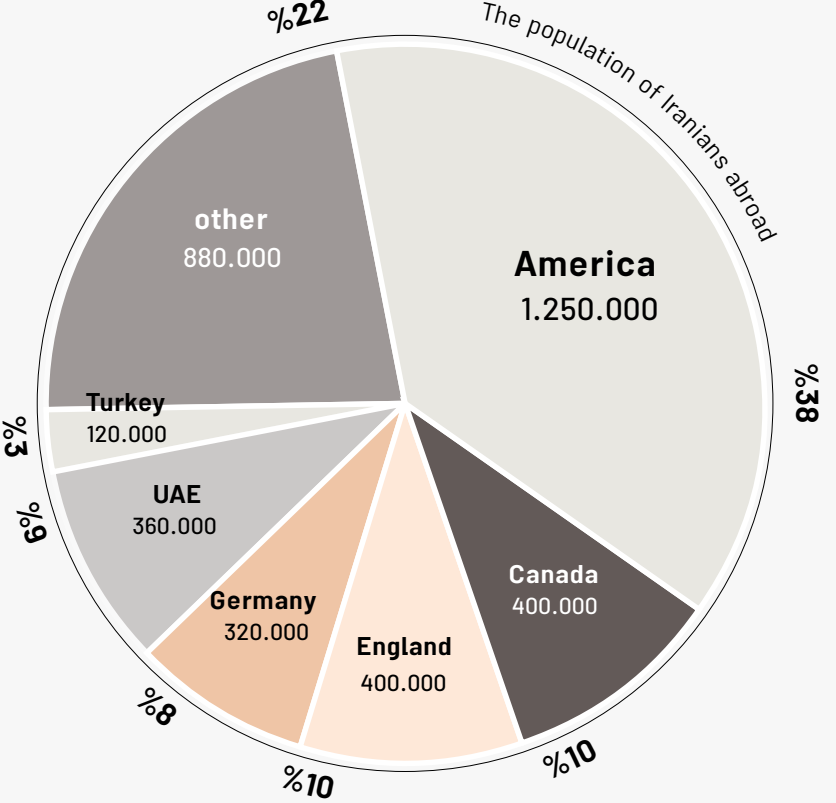
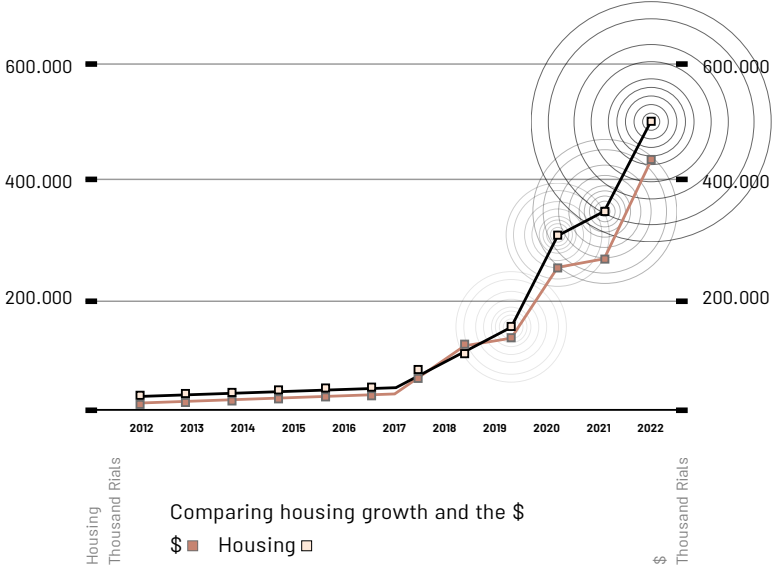
How does **SEO** help increase targeted visitors and convert them into customers?

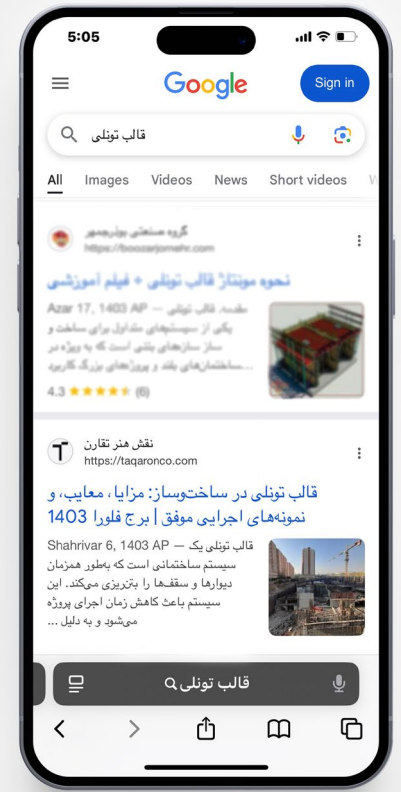
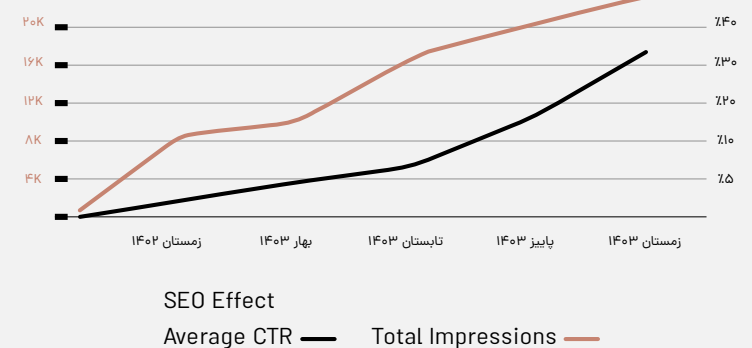
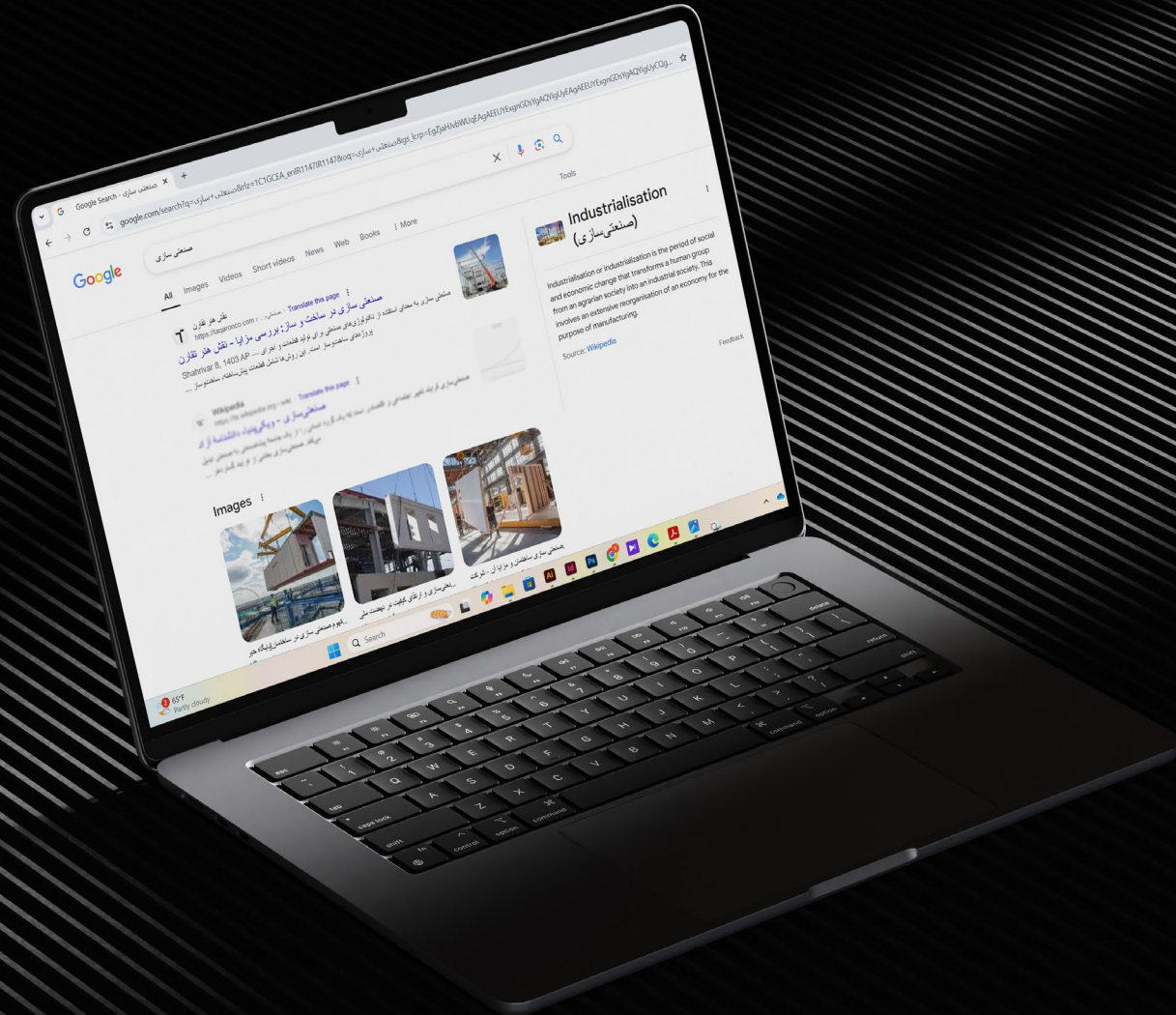


How to Target Audiences Through Digital Marketing?

Which Digital Marketing Campaign is Right for Every Business?

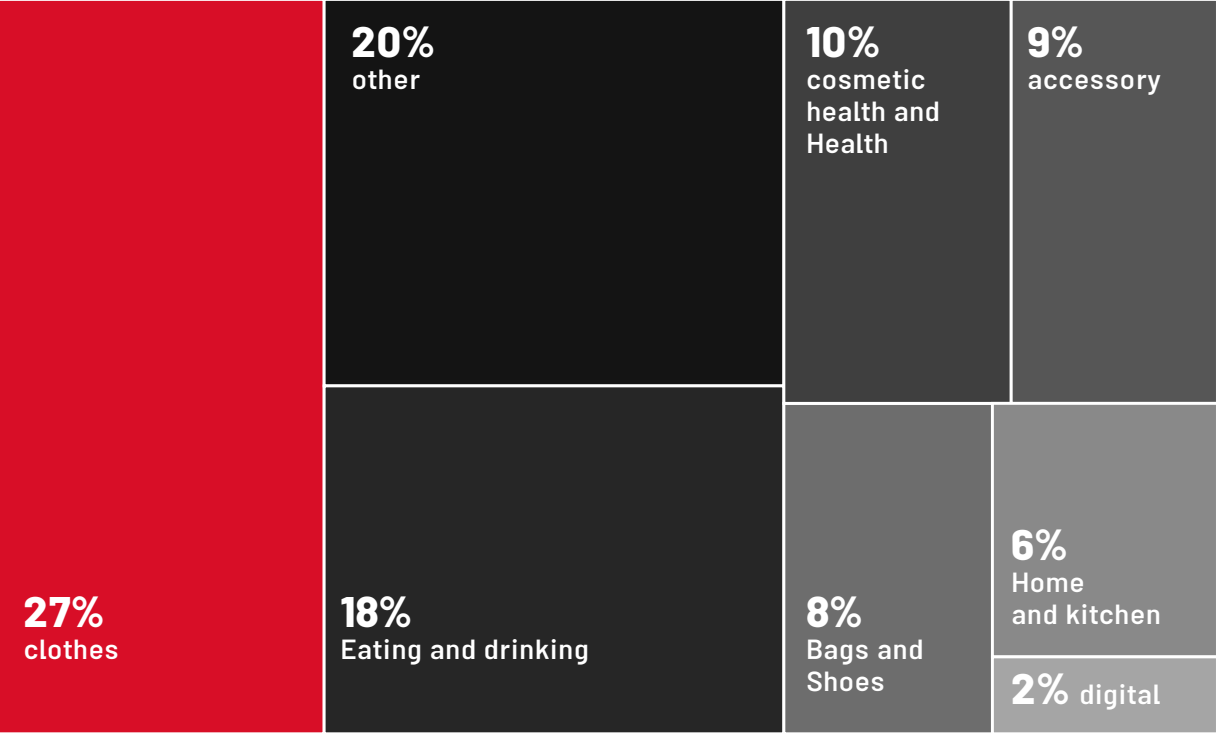




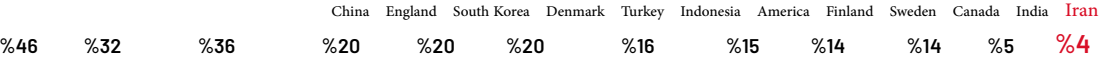
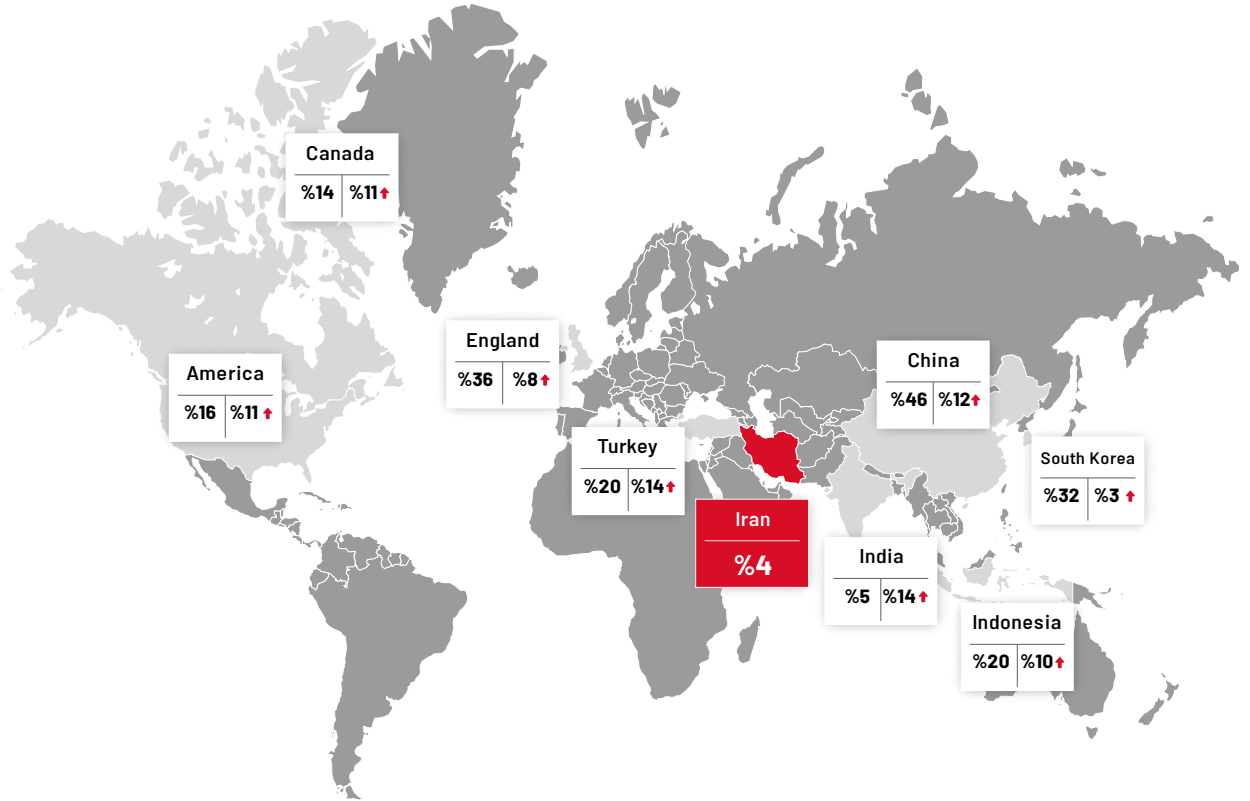


wink

How business intelligence helps to achieve profitability and effectiveness?



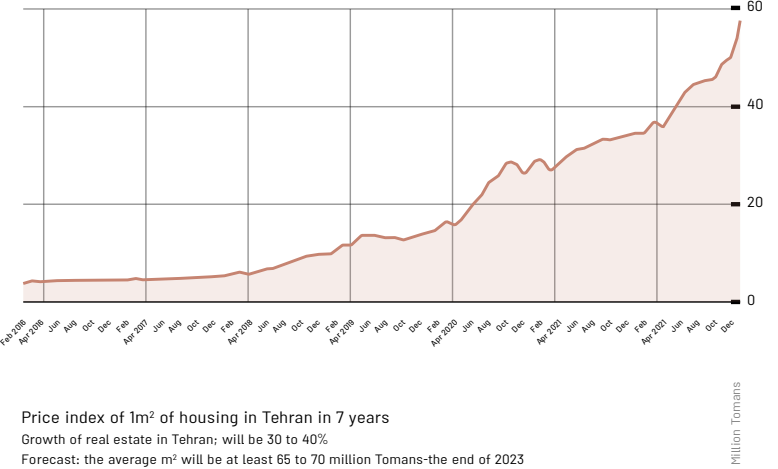
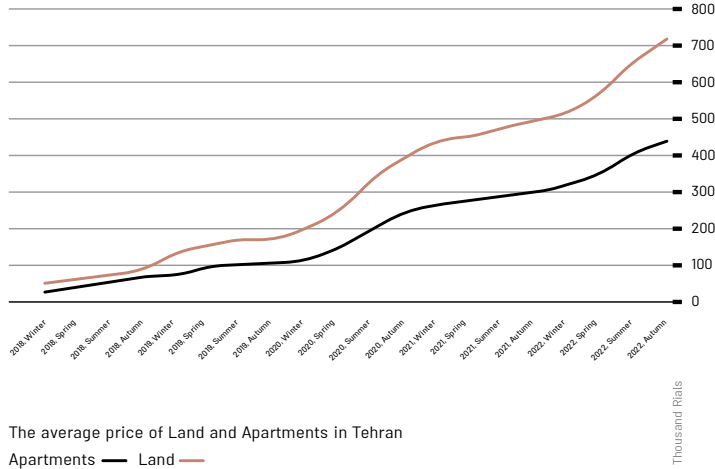
The field of activity of Iran's Instagram stores in 2022

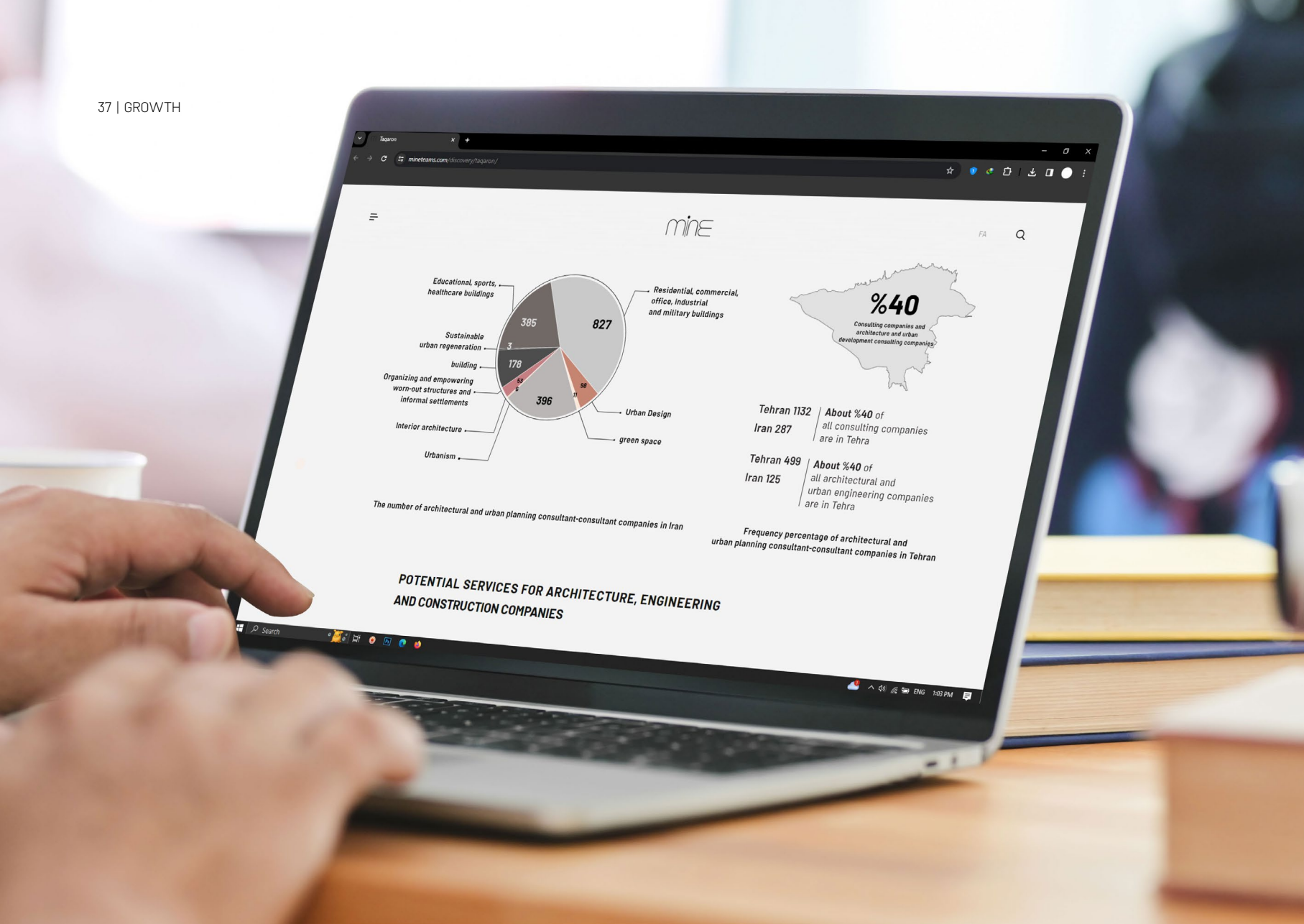


Expected annual growth rate in the next 5 years

How can I make **processes, tasks** and **relationships** within the business effective?

How is **innovative targeting** achieved at each stage of business?





Specialized engineering solutions

Integrated project collaboration and delivery

Data analysis and artificial intelligence

Prefab and modular construction

Integrated design and construction

Workforce and skill development

Digital transformation

Sustainable and green building design

Construction technology and innovation

Infrastructure development and management

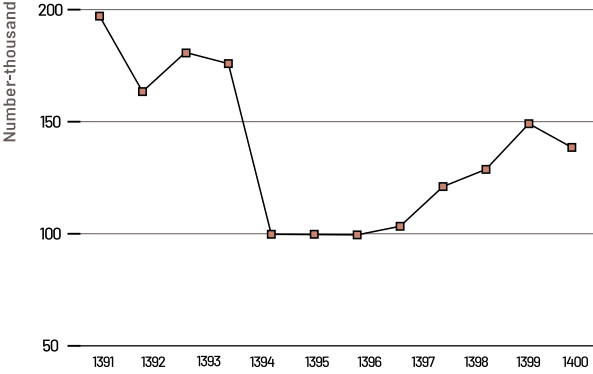
Smart cities and urban planning

Facilities and asset management

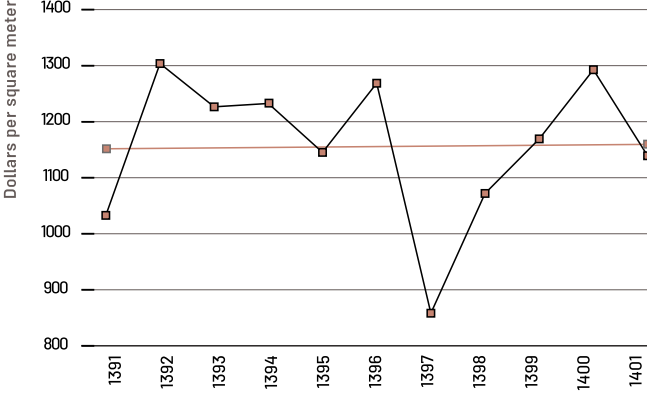
Renovation and retrofitting

Advanced materials and techniques

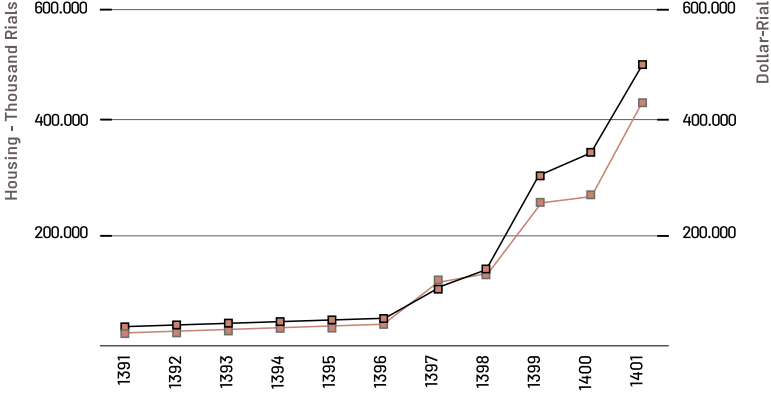
How can I verify and manage the organization's **data and knowledge**?



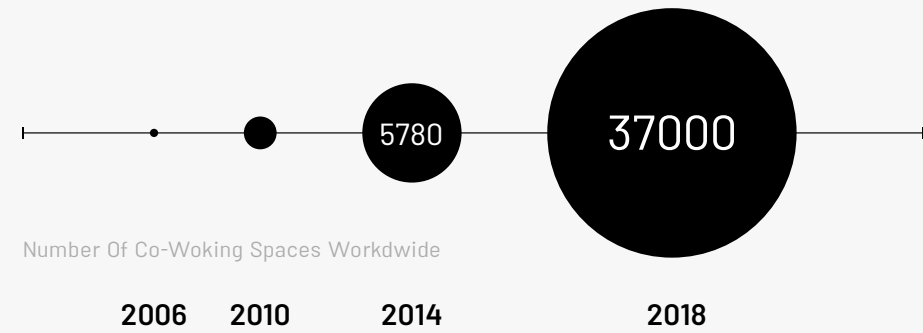
The frequency of residential building construction permits in urban areas of the country



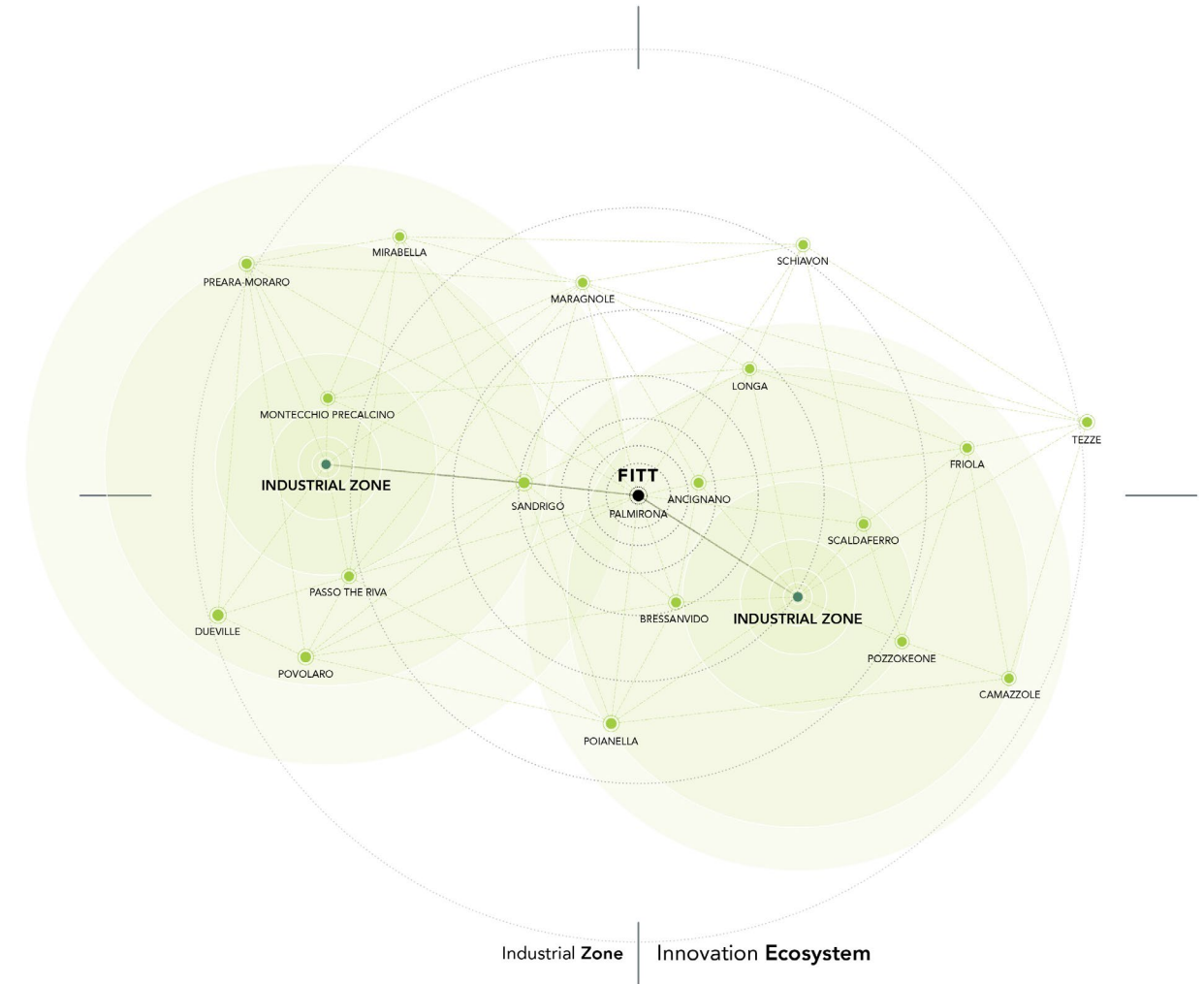
The dollar price of housing in a 10-year period



Comparison of housing and dollar price growth



How can I align team and processes with **business goals**?



DESIGN



Experience

We create immersive digital and physical experiences from architecture and spatial design to online channels design and web development, that leave a lasting impression on your customers.

- Architecture Design
- Environmental Graphic
- Innovative Consultancy
- Website Design
- Graphic Design

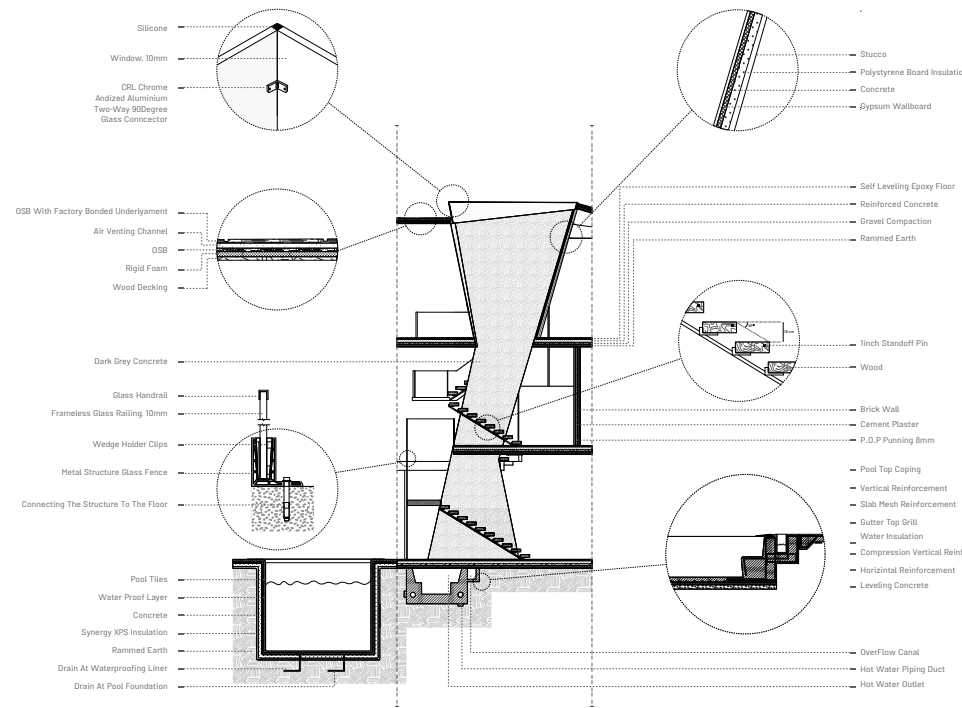
Expression

We enable brands to effectively communicate their message with captivating and visually striking designs, setting them apart in a competitive market, and showing their unique identity.

- Visual Identity
- Creative Strategy
- Verbal Identity
- Conceptual Strategy
- Experience Improvement

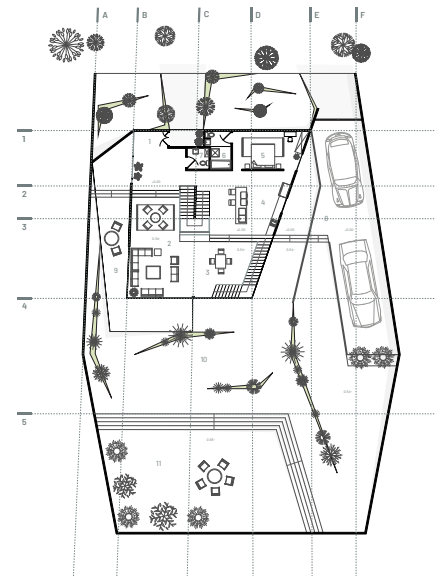
DESIGN

What is the best way to design **interaction** and **communication** with customers ?

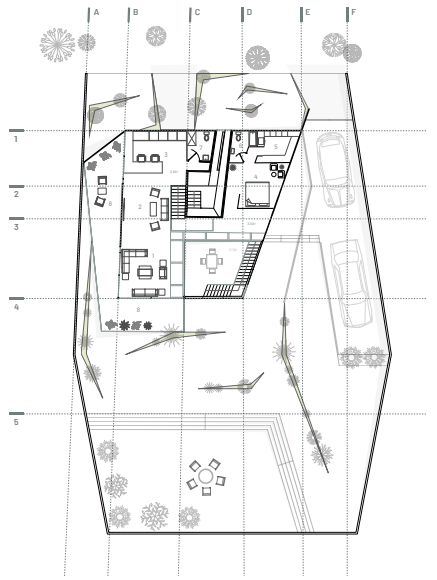


How can I use the updated **spatial program** and **innovative ideas** in building design?





- Ground Floor
- | | | | |
|---------------|------------------|----------------|--------------------|
| 1 Entrance | 4 Kitchen | 7 Toilet | 10 Yard |
| 2 Living Room | 5 Master Bedroom | 8 Parking | 11 Gathering Space |
| 3 Dining Room | 6 Master Bath | 9 Private Yard | |

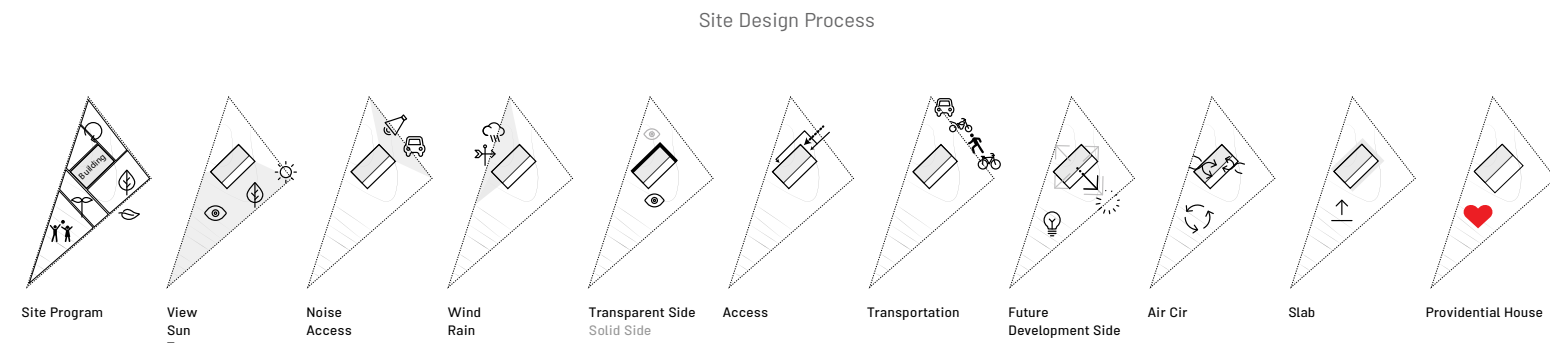


- 1st Floor
- | | | | |
|---------------|------------------|------------------|-----------|
| 1 Living Room | 3 Working Space | 5 Walk-in Closet | 7 Toilet |
| 2 TV Room | 4 Master Bedroom | 6 Master Bath | 8 Balcony |

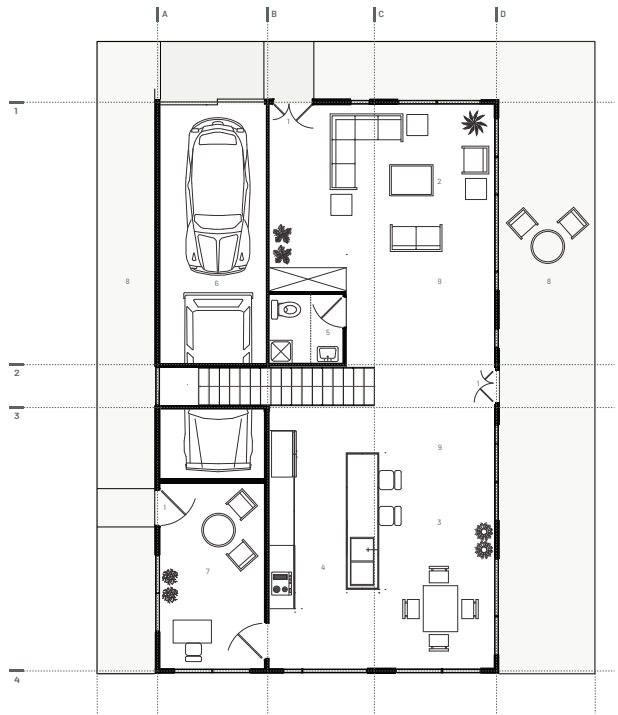




1:61 | DESIGN

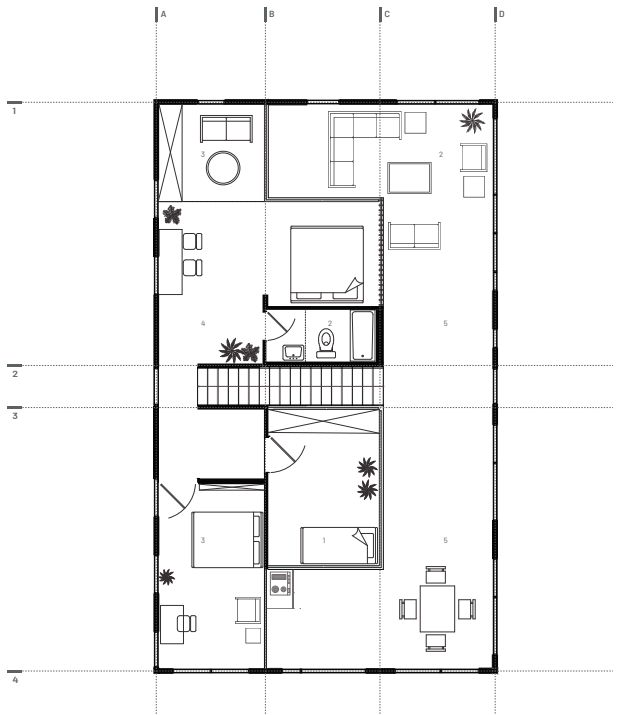


What factors in architectural design increase the **value** of the building?



Ground Floor

1 Entrance	4 Kitchen	7 Office
2 Living Room	5 Bathroom	8 Yard
3 Dining Room	6 Parking	9 Inbetween Space

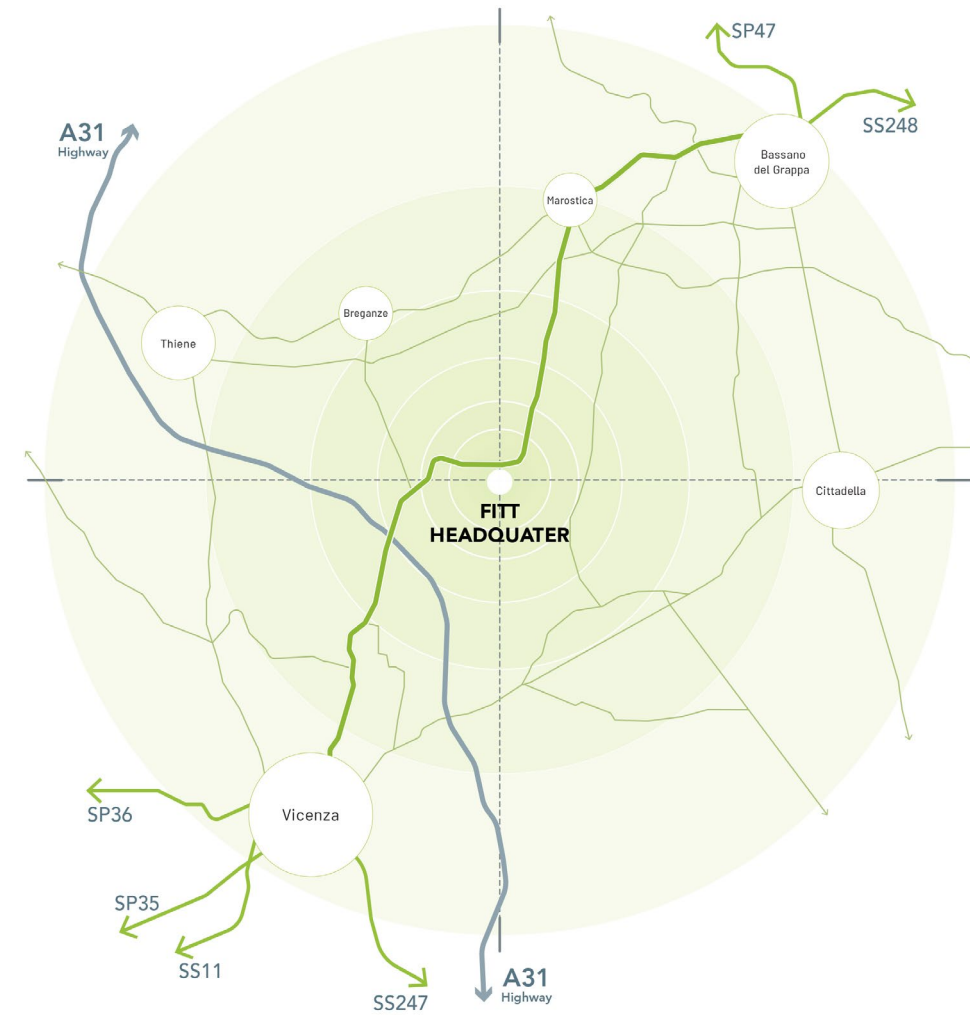


1st Floor

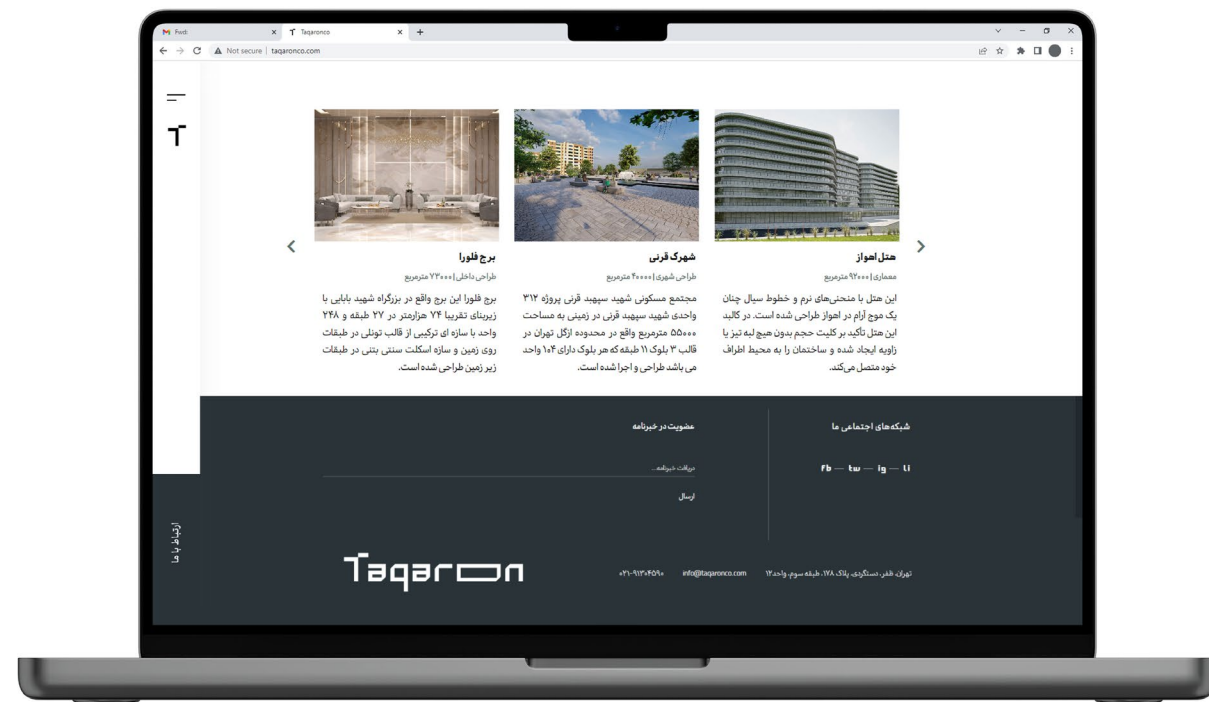
1 Bedroom	3 Conditional Space	5 Inbetween Space
2 Master Bath	4 Master Bedroom	



What is the best **scenario** for building | space development?



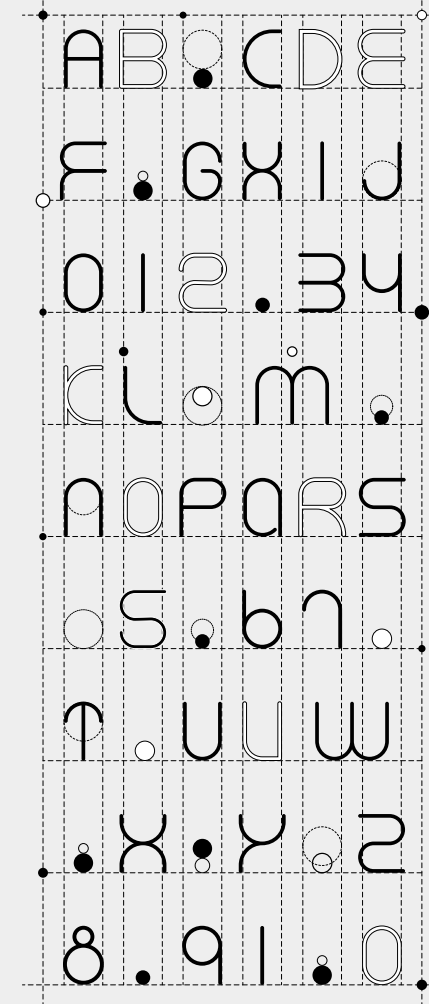
How does digital customer experience help the business | brand **value** grow?





What is the perfect **name** for a company | brand | building | product?

How are business and product accurately reflected by **visual identity design**?







شماره تلفن:مکان:
تاریخ:
پست:

کارخانه سنگ خوزستان

مدیریت محترم شرکت عمران آپادانا:

با سلام و نهایت احترام!

به استحضار میرساند کارخانه سنگ خوزستان در سال ۱۳۵۳ تأسیس و شروع به کار نمود. در ابتدا این کارخانه به صورت سنتی اداره می شد و با حجم تولید کم و در عین حال تنوع سنگی زیاد (مانند سنگ سیاه نجف آباد، لاشتر، اژدها، الیگودرز، نیریز، تراورتن و...) که عمدتاً بصورت درپوش تولید می شد.

در سال ۱۳۶۰، به سبب کثرت شرکا و اختلافات مابین آنها تصمیم گرفته شد سالن جدیدی در کنار سالن قبلی تأسیس و شرکا به تعداد کمتری تقسیم شوند که به سنگبری خوزستان ۱ و ۲ نام گذاری شد. رفته رفته با توجه به نیاز بازار، کارخانه از کثرت و تنوع تولید کاست و به تولید یک نوع سنگ پرداخت. در حال حاضر سنگبری خوزستان ۱ و ۲ با مدیریت واحد اقدام به تولید سنگ گریستال لایمید (نیمه و روشن) بصورت تایل و در تنوع تولیدی سبک، پوشهر، چرمی، تیشه، اسکرچ و... می باشد.

اذا این کارخانه در زمینه هایی که در بالا ذکر شد، آمادگی خود را جهت همکاری با آن شرکت محترم اعلام می دارد. امید است با همکاری های سودمند در آینده بتوانیم سبب بهبود در تیل به اهداف باشیم.

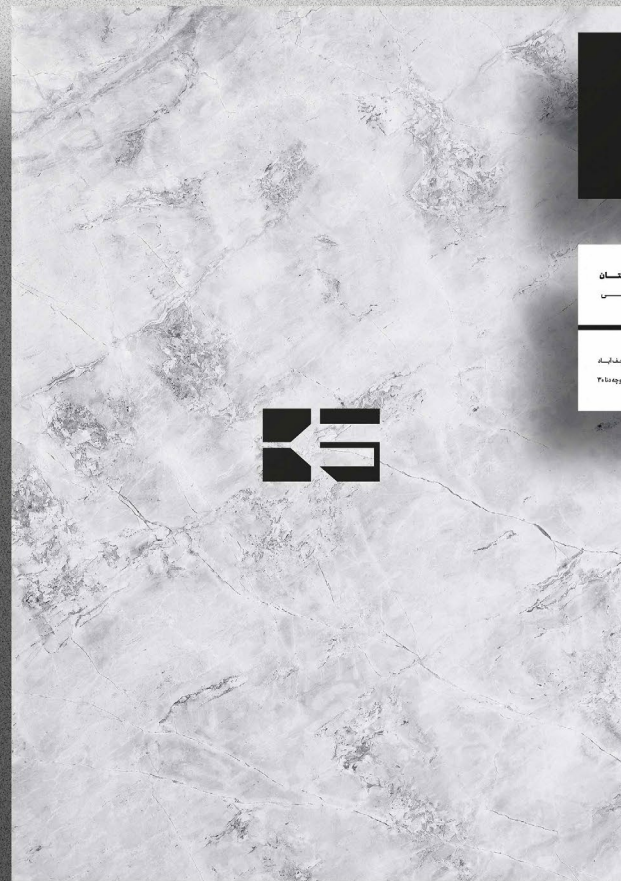
با آرزوی توفیق روز افزون

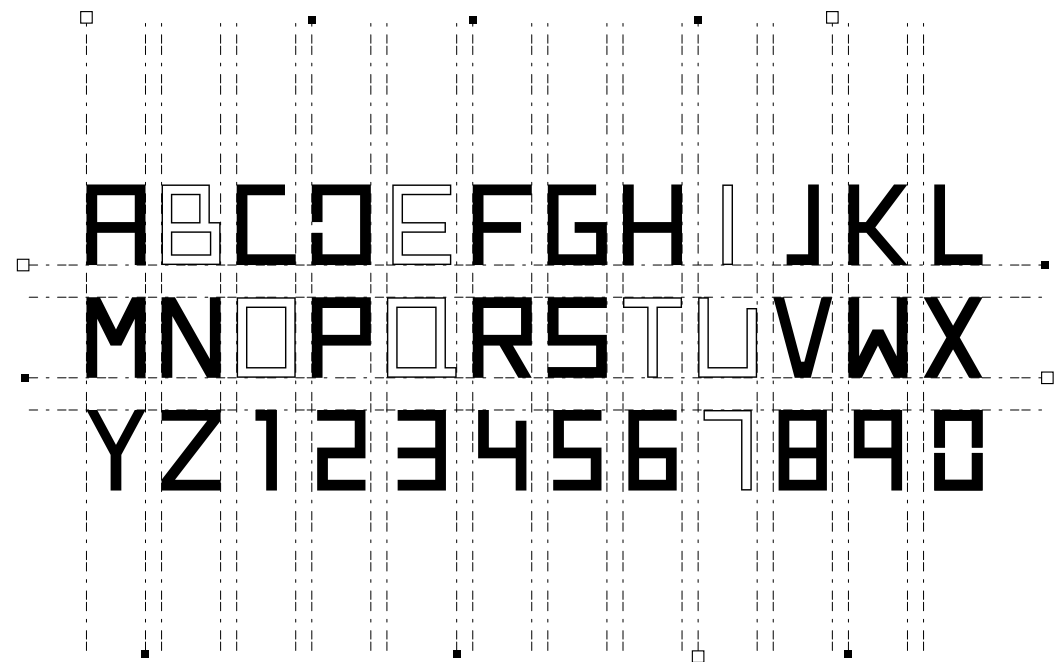
محسن یزدانی

مدیرعامل کارخانه سنگ خوزستان

تلفن: ۰۲۱۳۱۳۱۳۱۳۱۳۱۳۱۳۱۳
وبسایت: khozestanstone
www.khozestanstone.ir
info@khozestanstone.ir

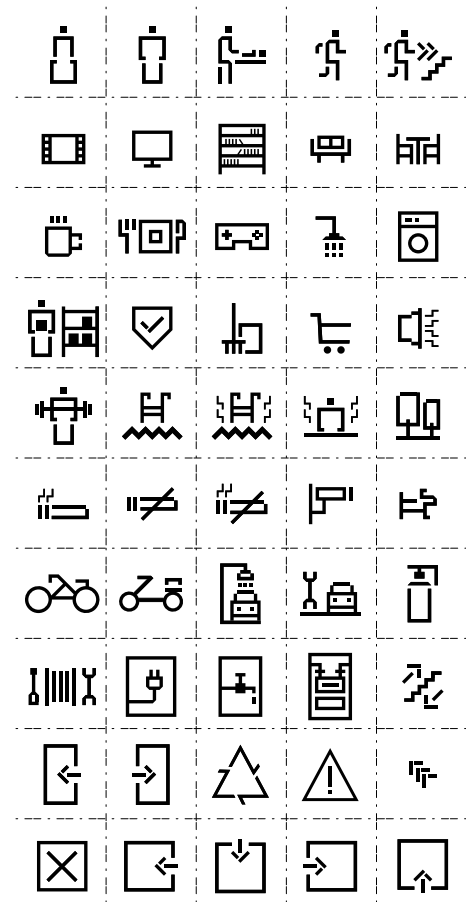
مکان: اصفهان- خیابان راه خیمه اباد
پست: ۳۵۱۳۱۳۱۳۱۳۱۳۱۳۱۳





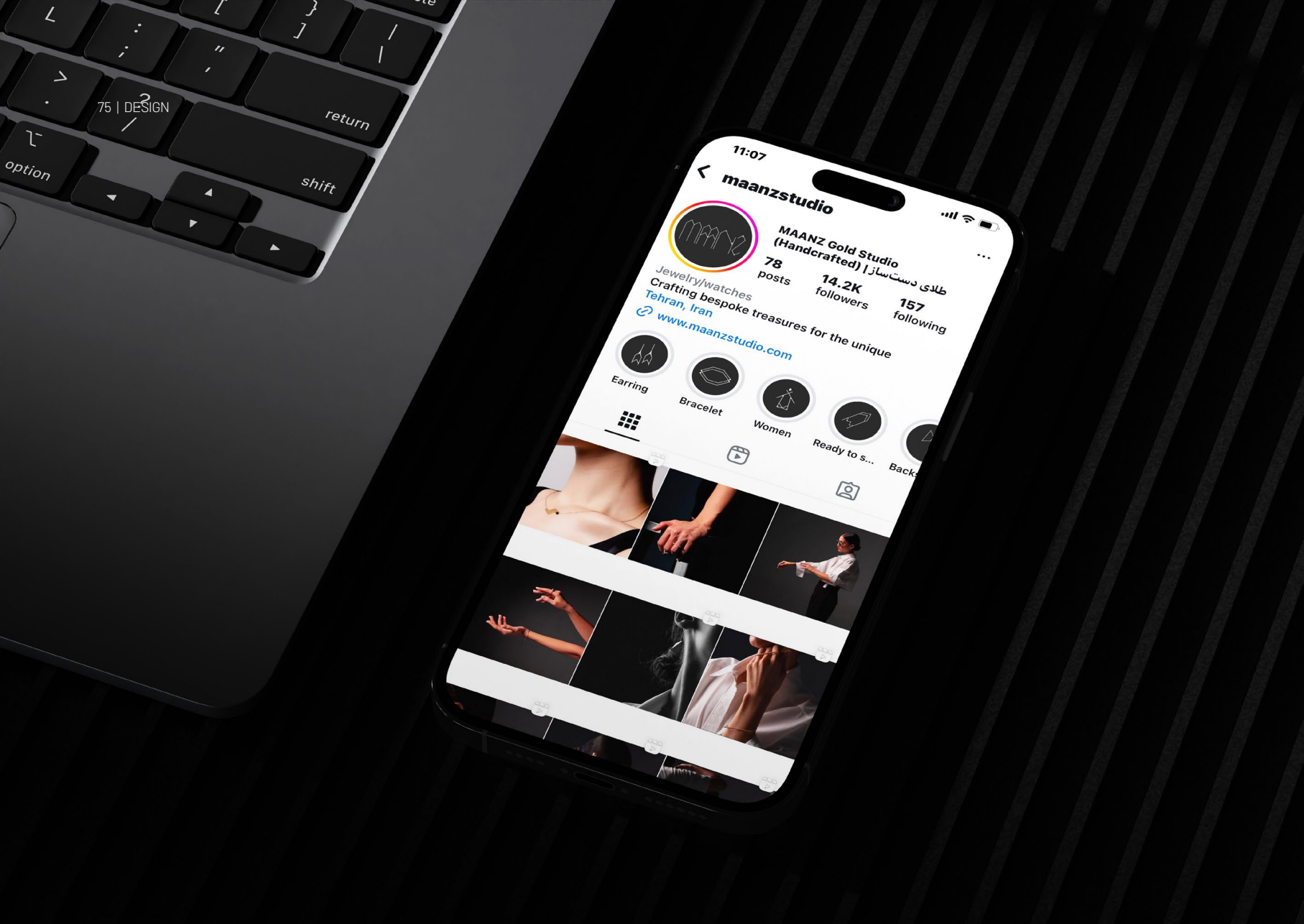
How can I create a **memorable** customer experience?

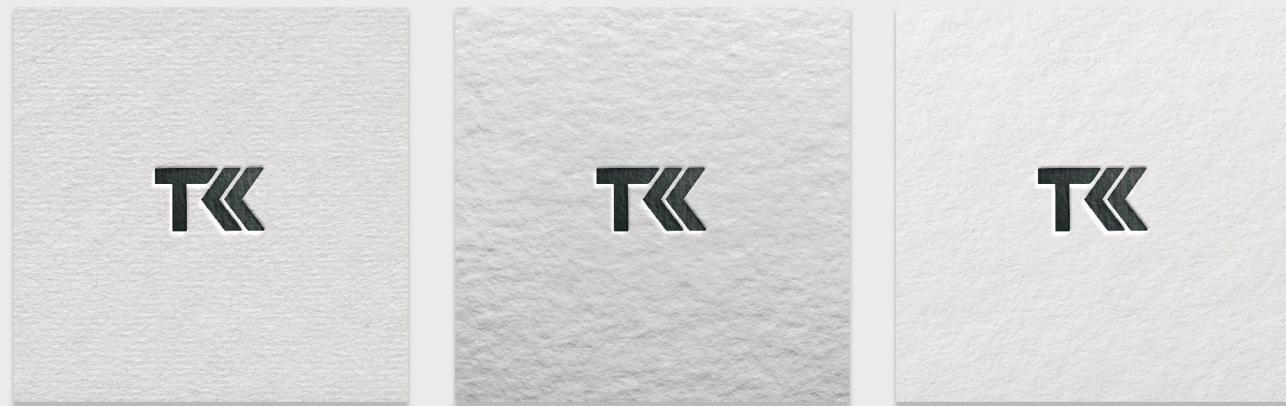
BOUTIQUE
APARTMENT 7





How to help the **growth** of business | product value by **visual identity design**?





When is the real need for branding **formed** and **evaluated**?

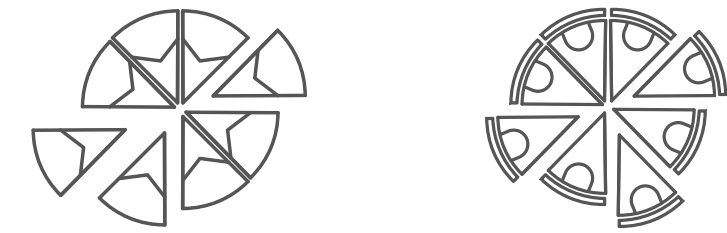
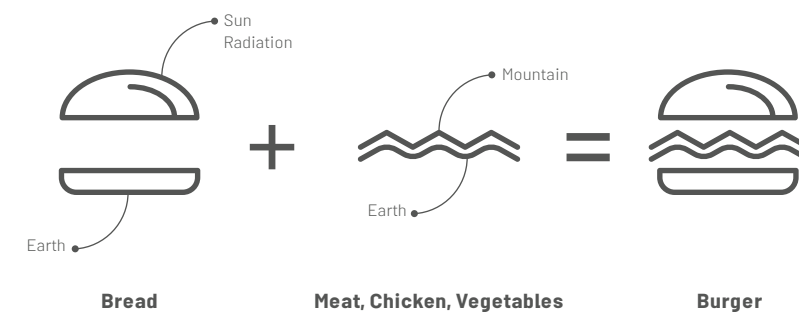


How are the business and product accurately reflected through **visual identity design**?



How is the best expression of **brand architecture** obtained?





CONTACTS

mineteams.com | Info@mineteams.com | +98 990 22 11 412

Tehran. Iran | [@Mineteams](#) | [Linkedin.com/mineteams](https://www.linkedin.com/company/mineteams) | [Instagram.com/mineteams](https://www.instagram.com/mineteams)



گروه رشد، توسعه کسب و کار
Growth Group, Business Development

فروردین ۱۴۰۴
April 2025

