

Growth | Design Profile

mine

2026

Creation | Execution | Performance | Development | Expression | Experience

EMBRACE CHANGES

CREATE OPPORTUNITIES

Who We Are 01

- 01 About Us
- 02 Strategy
- 03 Broad Geographic

What We Do 02

- 05 Activities
 - Growth
 - Design

How We Do 03

- 09 Clients
- 11 Teams

CVICONTENT

Growth 04

- 13 GROWTH
 - Business Creation
- MINE 2019
- ICS Platform 2021
- Maanz 2021
- Abra 2022
- 19 Khuzestan Stone 2025
- 23 The Kariz 2025
- Himo 2022
- 25 Taqaron 2024
- 27 Wiink 2023

- Business Execution
- Khuzestan Stone 2021
- Baft Shahr 2023

- Business Performance
- Taqaron 2022
- Business Development
- Basilico 2020
- Khuzestan Stone 2021

- Zagross 2022
- Diako 2022
- Olbrich 2024
- 31 Zandigan Group 2025
- AshaSpid 2025

Design 05

- 37 DESIGN
 - Experience | Physical
- Telecommunication Exhibition 2014
- Iran University of Science and Technology 2015
- Zarivar Cafe Baar 2016
- Science and Technology Park 2016
- Cibo 2016
- Farahani Residential Apartment 2016
- 41 House No.01 2017
- Indigenous Canadian House 2017
- Standard Laboratory 2017
- Zaferanie Mall 2017
- Mana Collection 2017
- Northern Garden Park 2017
- Yahyae House 2018
- Plasco 2018
- Family House 2018

- 46 Providential House 2019
- Arak Innovation Factory 2019
- Karun Collection 2019
- 49 Basilico 2020
- Kumush Collection 2020
- Damavand Collection 2020
- Era Collection 2021
- Experience | Digital
- MINE 2019
- ICS Platform 2021
- Pragmatica 2022
- 53 Taqaron 2022
- Expression | Identity
- Badii Leather 2017
- MINE 2017
- 57 Bnon 2019
- ICS Platform 2019
- 59 Khuzestan Stone 2021

- 63 Boutique Apartment 2021
- 67 Maanz 2021
- 71 Kaaj 2021
- 73 Yas Beauty Clinic 2022
- 75 Zagross 2024
- Taqaron 2022
- Wiink 2022
- Expression | Interaction 2023
- ICS Platform 2022
- 79 Graph 2025
- 81 Iran Skill Fund 2025

Contacts 06

- 83 Website
- Email
- Call
- Address
- ID
- Channels

**MINE, where design
and growth come together to
drive your business forward.**

Our team of experts;

specializes in providing comprehensive and innovative **solutions** to help your business thrive.

From architecture design and brand identity to channels design, From business ideation and modeling to business development support, we have the tools and expertise to take your business to the **next level**.

We believe that;

embracing changes and creating opportunities is the key to reach new **heights**.

Let us help you unlock your full potential and bring your vision to **life** together.

Our firm helps bridge the gap between the **present** and the **possible**, what is and what can be.

ABOUT US

STRATEGY

% **10** CANADA
EXPERIENCE

% **5** USA
EXPRESSION

% **15** EUROPE
EXPERIENCE
BUSINESS CREATION
BUSINESS EXECUTION

BROAD
GEOGRAPHIC

EXPERIENCE | EXPRESSION
BUSINESS CREATION
BUSINESS EXECUTION
BUSINESS PERFORMANCE
BUSINESS DEVELOPMENT

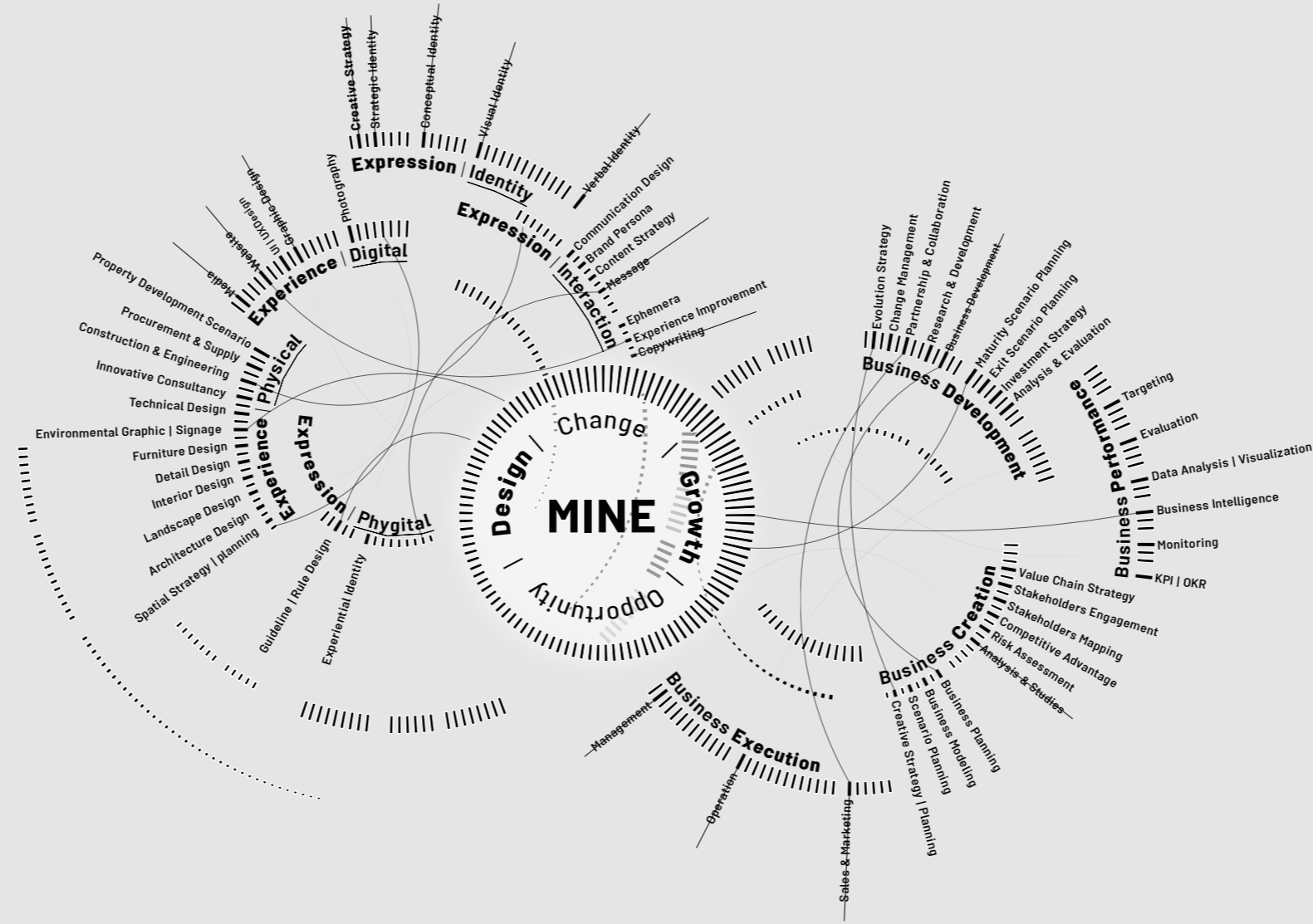
IRAN % **70**



We believe **Design** should be effective, and unforgettable.

Let us help you create a thrilling **experience** and precise **expression** that connects you with your audience.

- Architecture Design
- Environmental Graphic
- Innovative Consultancy
- Website Design
- Graphic Design
- Visual Identity
- Creative Strategy

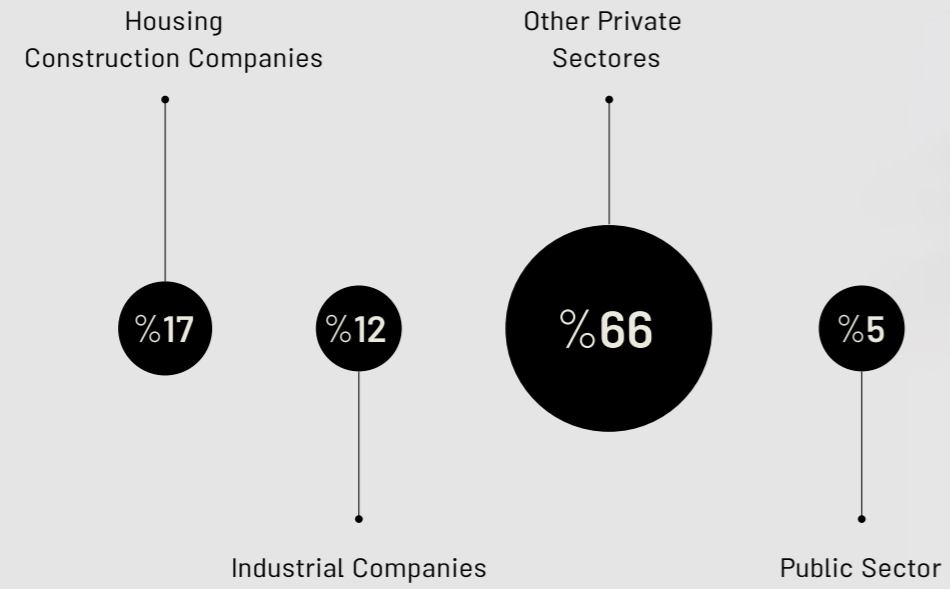


Growth can be a journey, but it doesn't have to be a daunting one.

We're here to help you navigate the path to success with customized **strategies** and expert guidance every step of the way.

- Business Modeling
- Risk Assessment
- Value Chain Strategy
- Management
- Operation
- Business Intelligence
- Investment Strategy

ACTIVITIES



CLIENTS

MINE's business model is based on being close to our **clients and experts**. We are ready to create value for the clients and partners in design and growth.

Iran Skill Fund | Zandigan Architecture Group | Wagon Pars Company |
AshaSpid Trading Company | Graph Business Innovation Group | Kariz
Investment Management | Olbrich Construction Group | Baft-E-Shahr
Consultant Engineering Company | Velenjak Boutique Apartment |
Taqaron Consultant Engineering Company | Diako Group | Zagross Food
Industry Group | Maanz Gold Studio | Kaaj Trading Company | Tabriz
Municipality | Arak Municipality Investmnet Organization | Arak Machine
Sazi Corporation | FITT Italy Headquarter | Khuzestan Stone Factory
| CIBO Cafe & Restaurant | Science And Technology Park | Rhyterna
Modular | Plat 0.8 | Markazi Standard Labratory |

Clients And Companions

We are a team of inspired and diverse individuals, driven by inclusion and guided by **purpose**.

Our passion for purposeful, sustainable work fuels our commitment to shaping our **communities** and the **future**.

We pride ourselves on our collaborative **approach**, thriving on challenges and unconventional thinking.

Our team is made up of a network of experts who channel our curiosity into creating innovative solutions to complex issues.

Pro-Team Member

MohamadMahdi SabetFard | Yeganeh Yektaeian

SY Saghar Yazdani
Coordinator | Designer

HA Hannan Abagheri
Designer | Analyst

ME Mohamad Ebrahimi
Director | Advisor

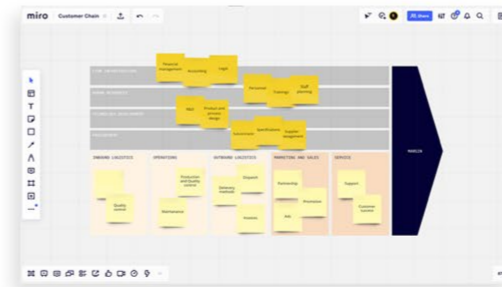
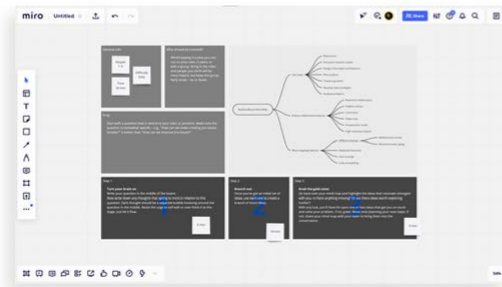
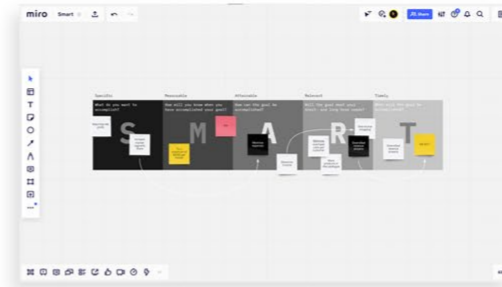
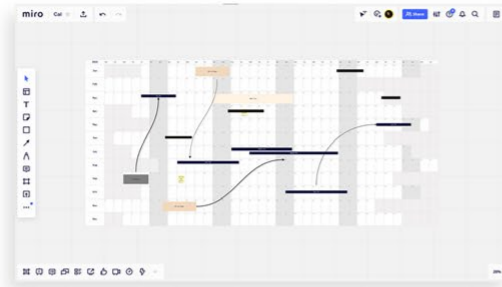
FM Farshad Moradabadi
Developer | Web designer

TEAMS



GROWTH





GROWTH

Business Creation

We collaborate closely with entrepreneurs to ideate and model businesses that are uniquely tailored to their vision, helping them to bring their ideas to realities.

- Business Modeling
- Business Planning
- Risk Assessment
- Stakeholders Mapping
- Value Chain Strategy

Business Execution

We provide end-to-end business plans and support for better execution, allowing businesses to efficiently and effectively execute their strategies, ultimately helping them achieve their goals.

- Management
- Operation
- Sales
- Marketing
- Planning

Business Performance

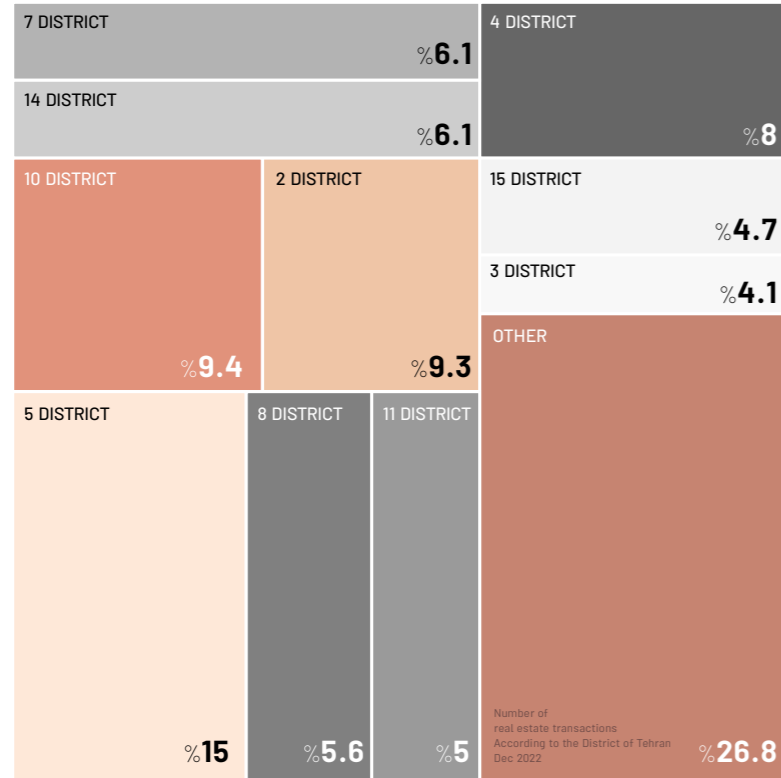
We measure and analyze data to identify areas for improvement, helping businesses to increase their performance, and maximize their profits.

- Data Analysis
- Business Intelligence
- Targeting
- Monitoring
- KPI | OKR

Business Development

We facilitate the growth and development of businesses' products or services by providing comprehensive strategic solutions, that covers the entire process from inception to exit strategy.

- Change Management
- Business Development
- Investment Strategy
- Exit Scenario Planning
- Analysis & Evaluation



How should I design and implement a creative **marketing** and **sales** plan?

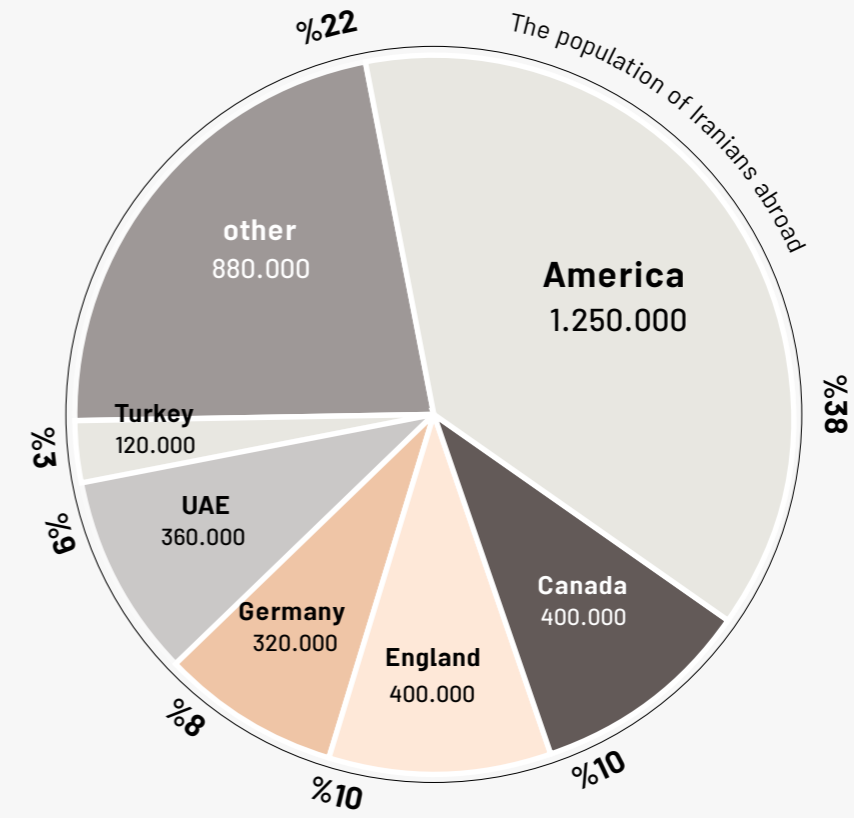
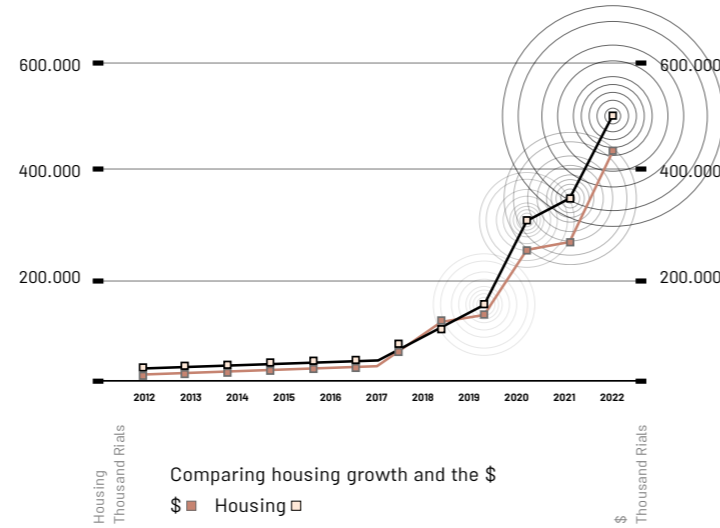


How to create a **scenario** for starting a business?

What are the real business **risks** and how are they **evaluated**?

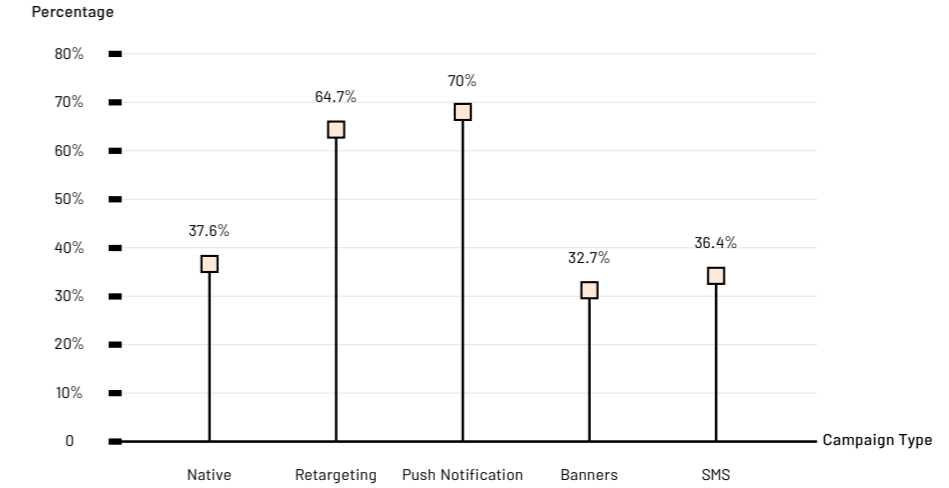
How should I deal with **exit** and **end** of business scenarios?



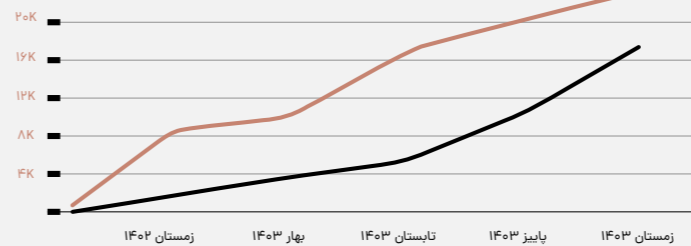
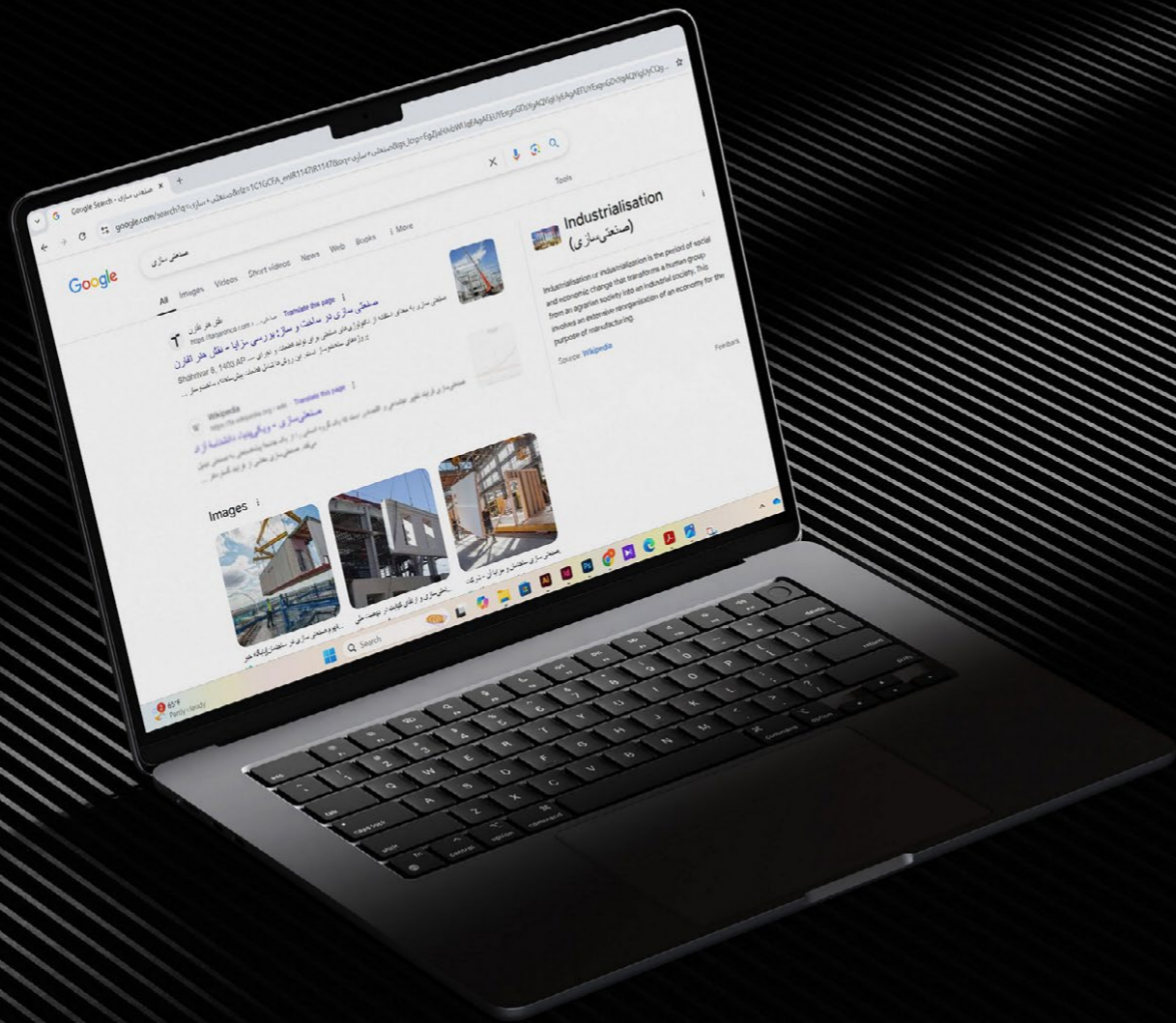


How to Target Audiences Through Digital Marketing?

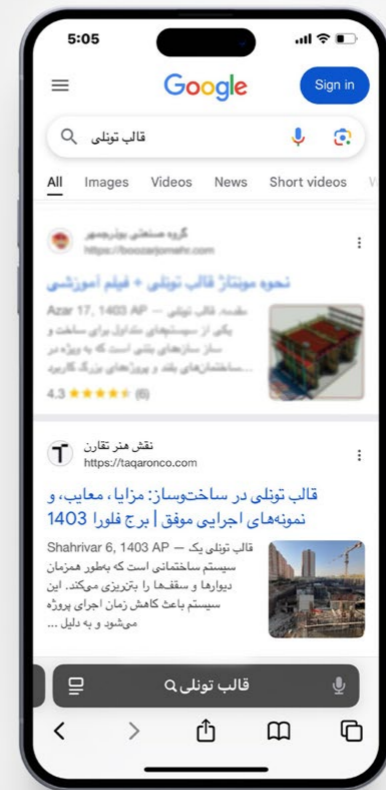
Which Digital Marketing Campaign is Right for Every Business?



Digital Advertising Conversion Rate of Construction Development Company

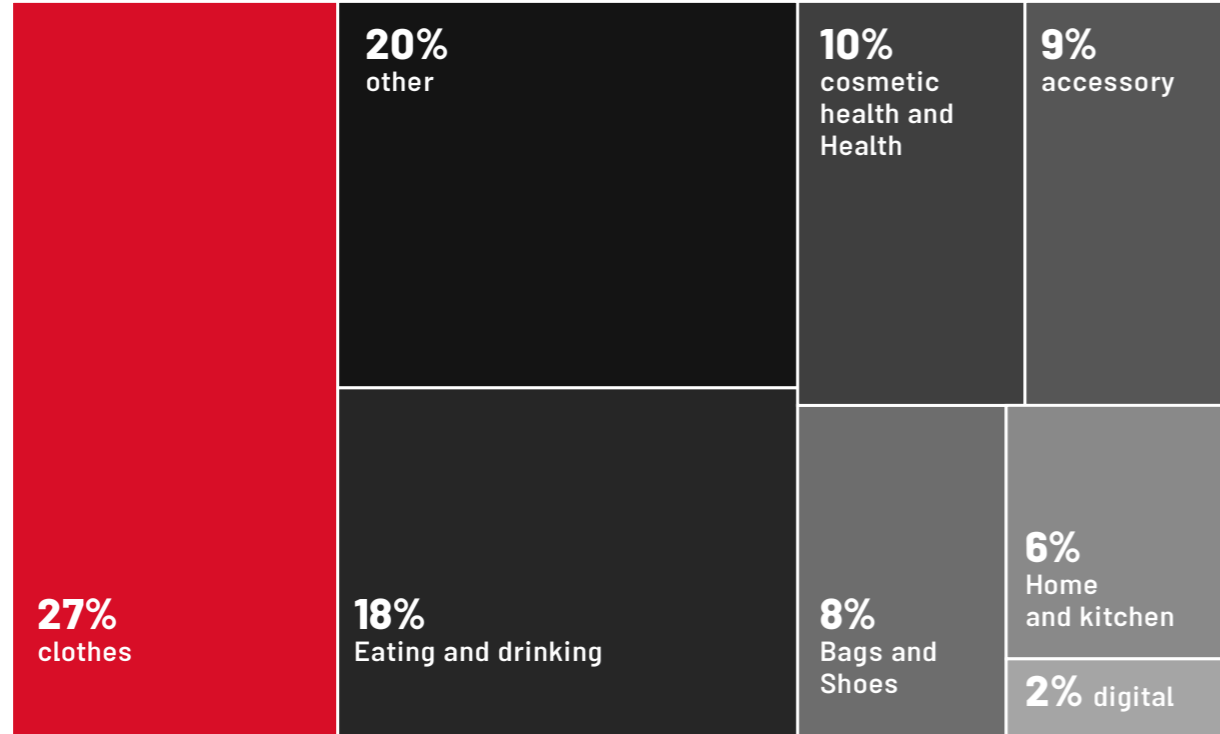


SEO Effect
Average CTR — Total Impressions —

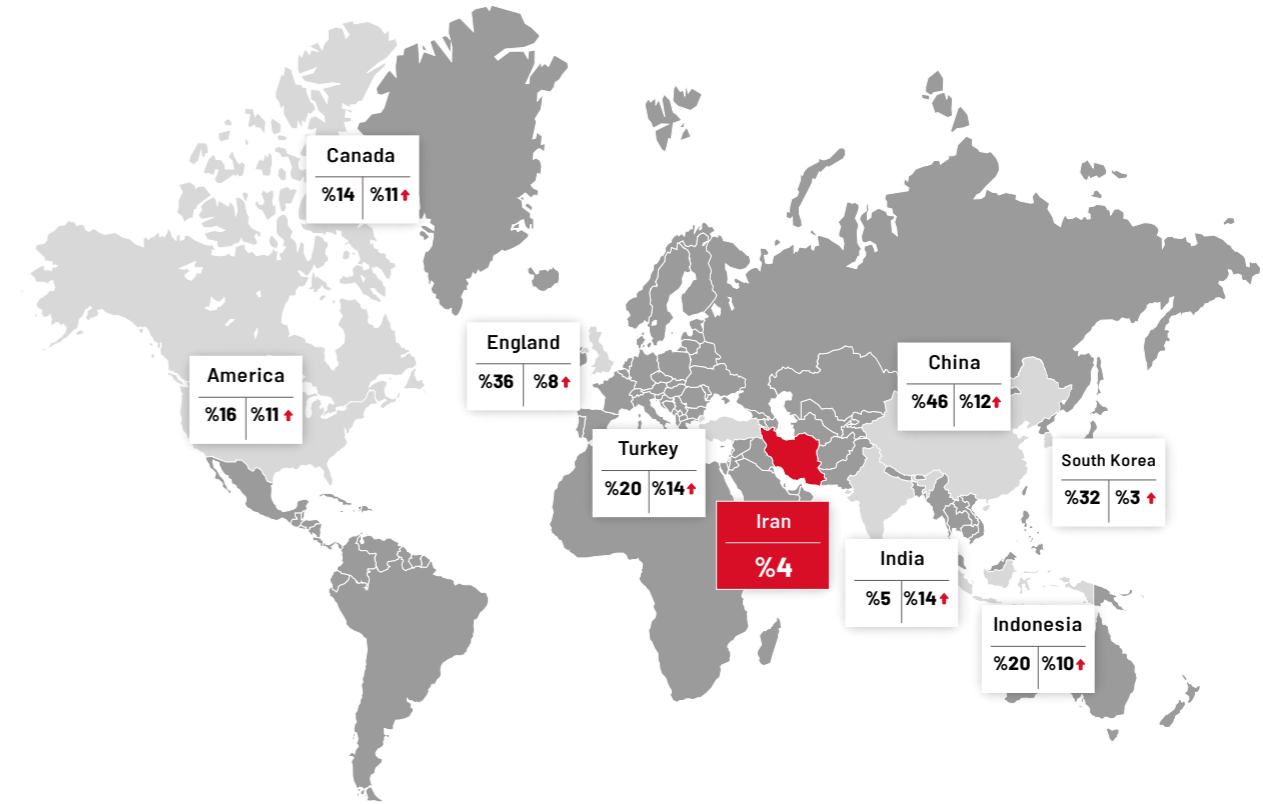


wiink

How business intelligence helps to achieve profitability and effectiveness?

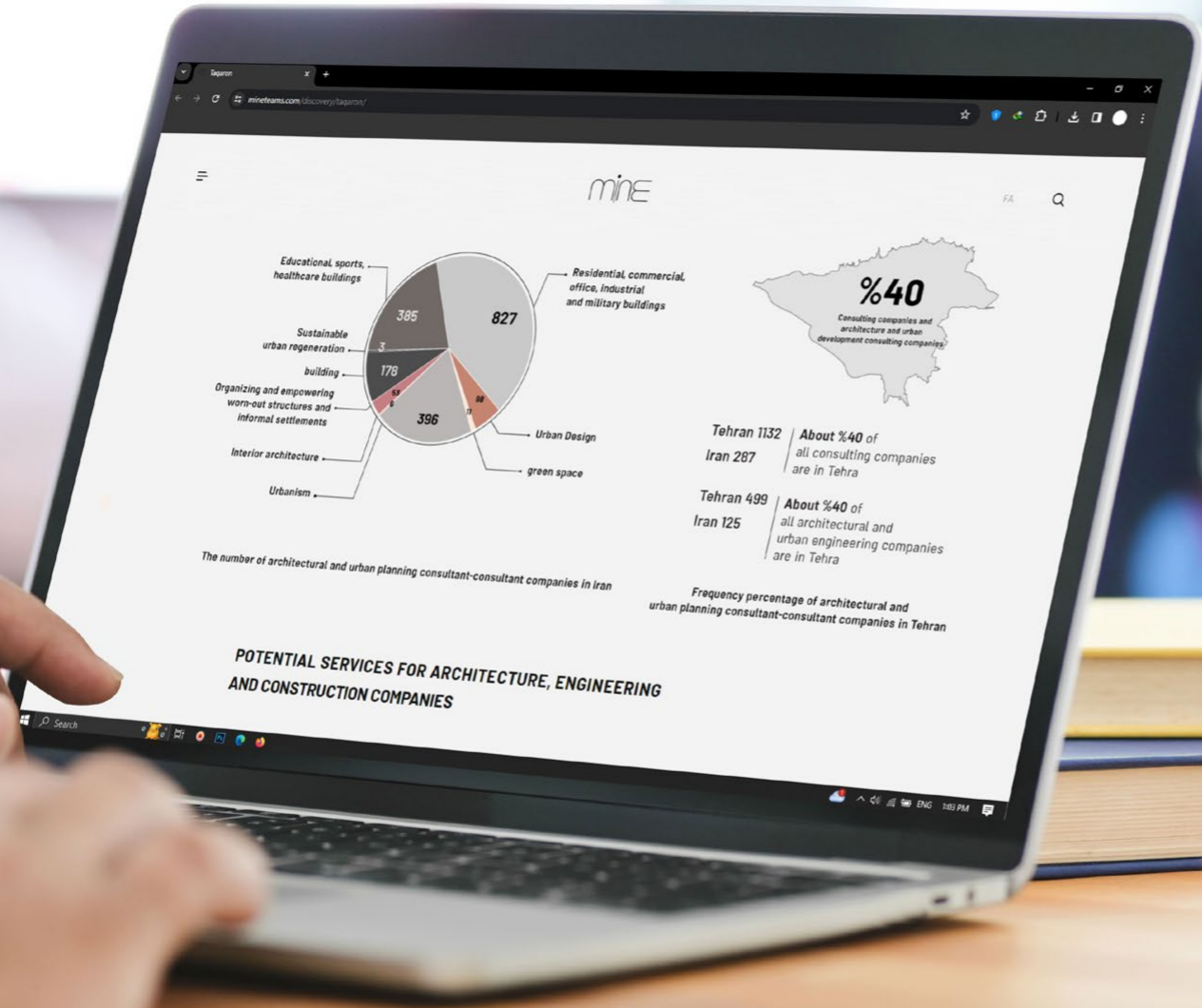


The field of activity of Iran's Instagram stores in 2022



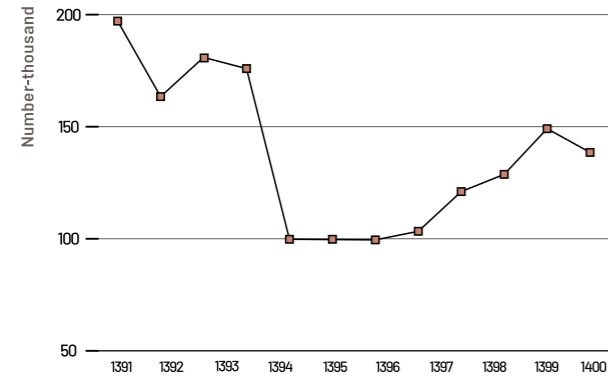
China England South Korea Denmark Turkey Indonesia America Finland Sweden Canada India Iran
 %46 %32 %36 %20 %20 %20 %16 %15 %14 %14 %5 %4

Expected annual growth rate in the next 5 years

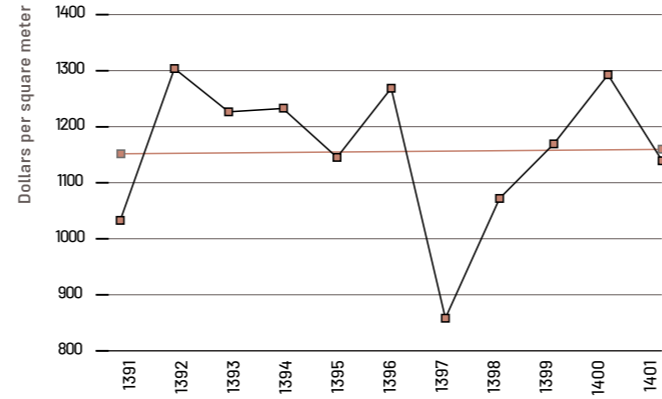


	<p>\ Dashboards</p>	<p>Library</p> <p>Everything essential for seamless file archiving and instant access, all in one place.</p>
	<p>\ Support</p>	
<p>Zandigan Architectural & Restoration Consulting Engineers.</p> <p>Designed and Developed By WEEEN</p>	<p>Timelog</p> <p>Everything you need to master time, task and resource management.</p>	<p>User\ Yalda Doryab Code\ 81031 Status\ Online/Offline</p> <p>+ zandigan.com</p>
<p>Booking</p> <p>Easy meeting and correction scheduling and booking, just a click away.</p>		

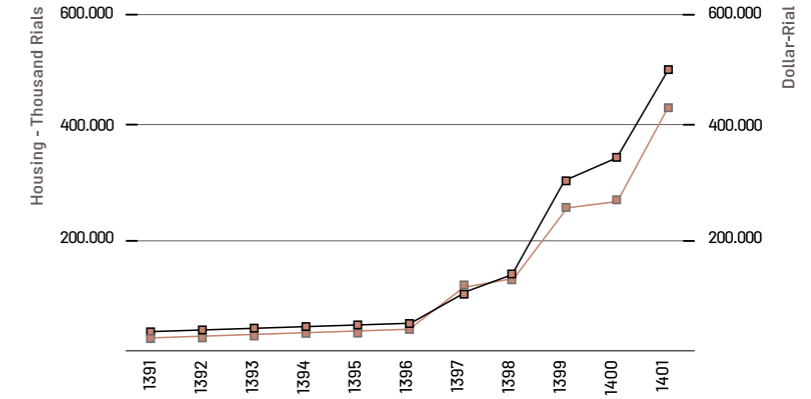
How can I verify and manage the organization's **data and knowledge**?



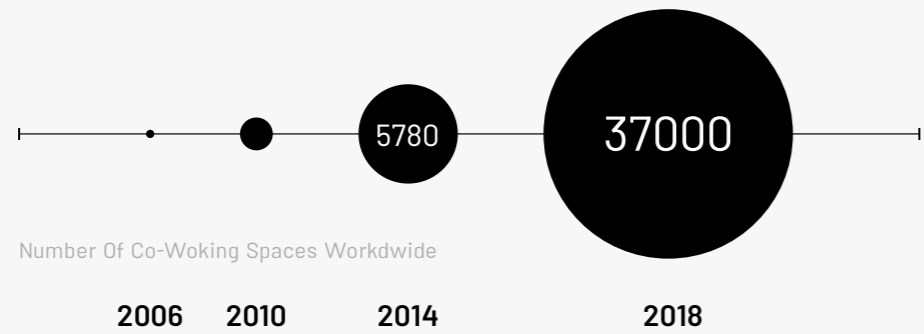
The frequency of residential building construction permits in urban areas of the country



The dollar price of housing in a 10-year period



Comparison of housing and dollar price growth

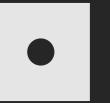


Number Of Co-Working Spaces Worldwide

How can I align team and processes with **business goals**?



DESIGN



Experience

We create immersive digital and physical experiences from architecture and spatial design to online channels design and web development, that leave a lasting impression on your customers.

- Architecture Design
- Environmental Graphic
- Innovative Consultancy
- Website Design
- Graphic Design

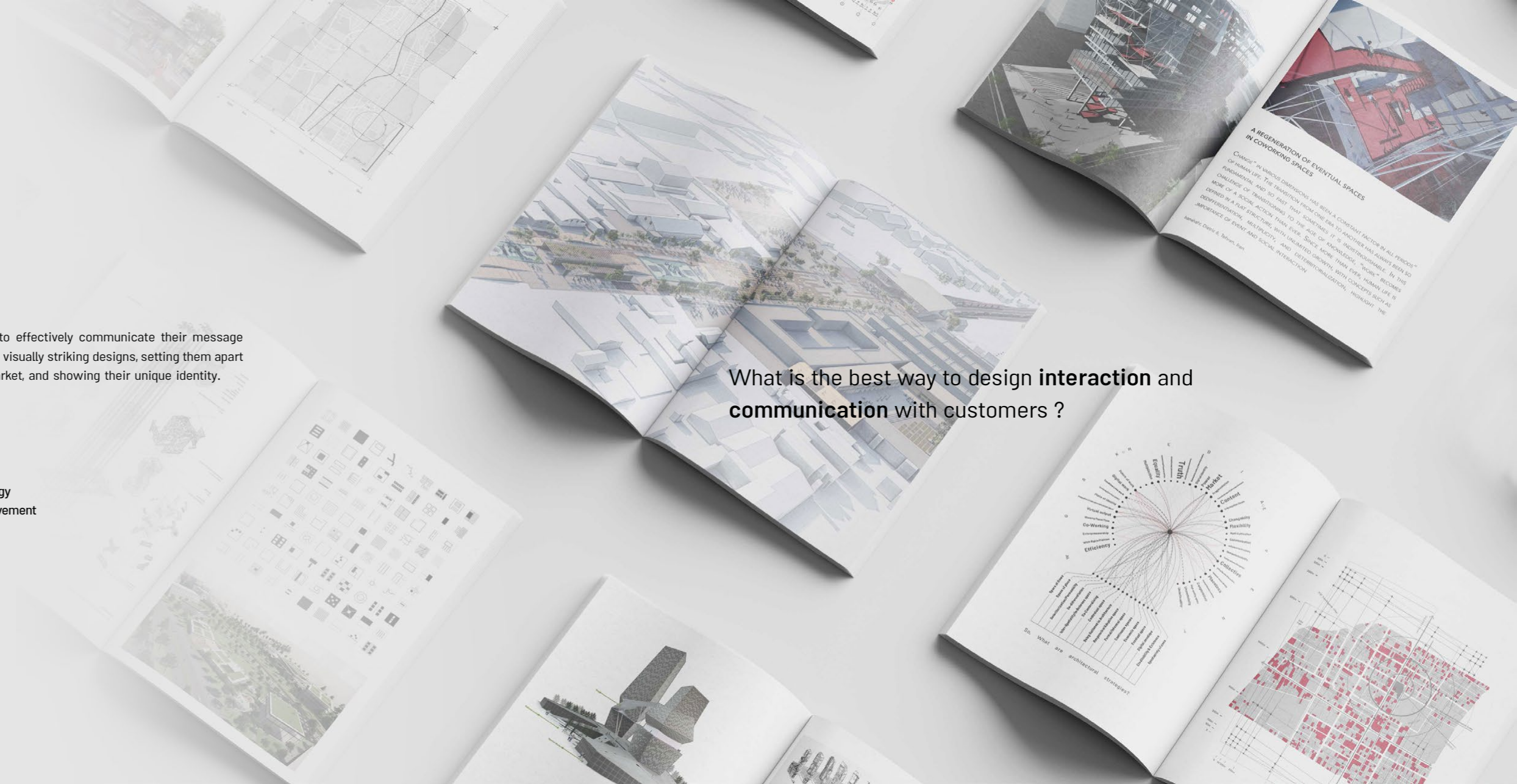
Expression

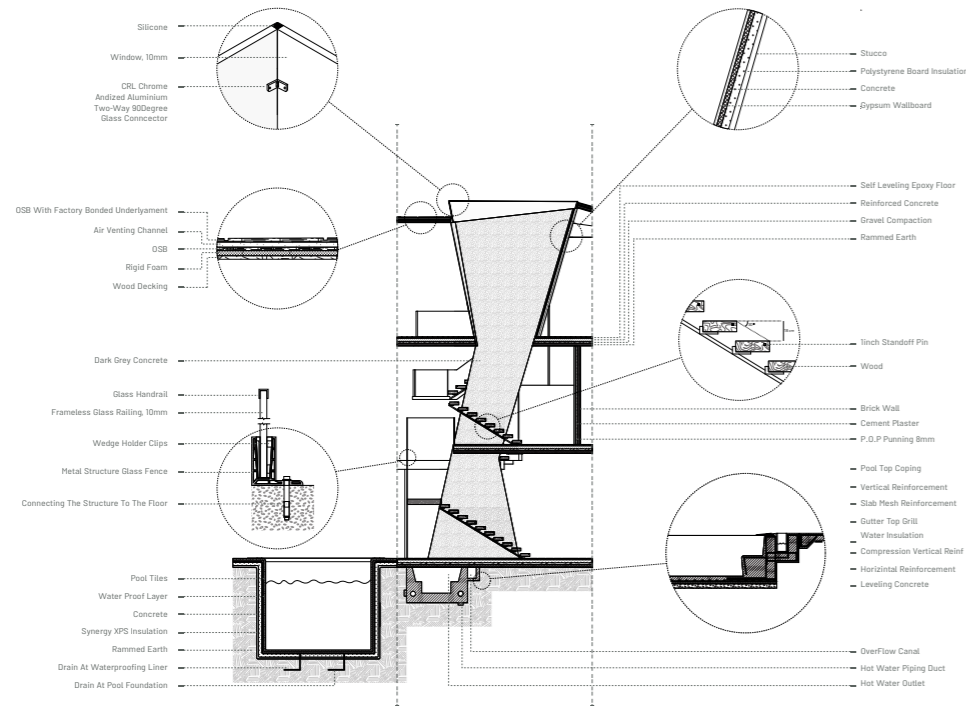
We enable brands to effectively communicate their message with captivating and visually striking designs, setting them apart in a competitive market, and showing their unique identity.

- Visual Identity
- Creative Strategy
- Verbal Identity
- Conceptual Strategy
- Experience Improvement

DESIGN

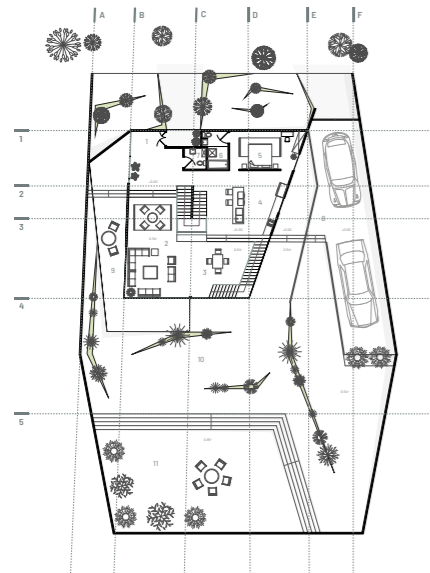
What is the best way to design **interaction** and **communication** with customers ?



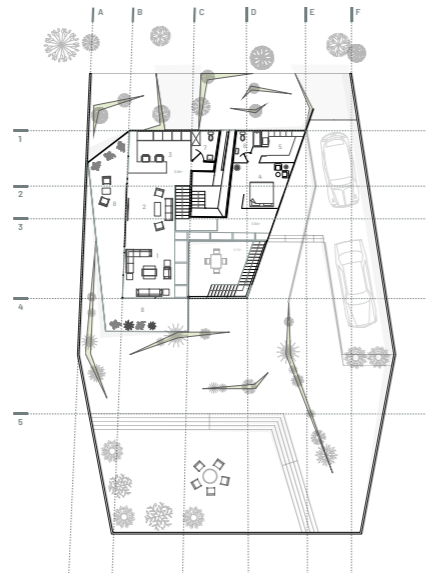


How can I use the updated **spatial program** and **innovative ideas** in building design?





- Ground Floor
- | | | | |
|---------------|------------------|----------------|--------------------|
| 1 Entrance | 4 Kitchen | 7 Toilet | 10 Yard |
| 2 Living Room | 5 Master Bedroom | 8 Parking | 11 Gathering Space |
| 3 Dining Room | 6 Master Bath | 9 Private Yard | |

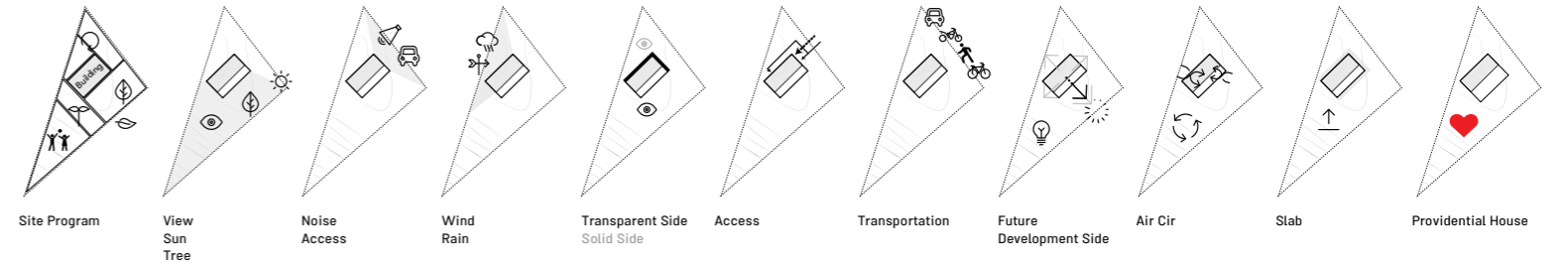


- 1st Floor
- | | | | |
|---------------|------------------|------------------|-----------|
| 1 Living Room | 3 Working Space | 5 Walk-in Closet | 7 Toilet |
| 2 TV Room | 4 Master Bedroom | 6 Master Bath | 8 Balcony |

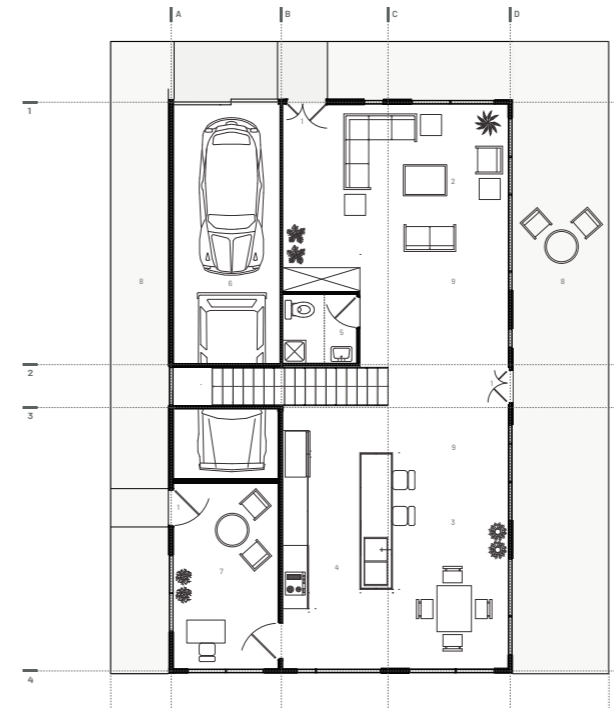




Site Design Process



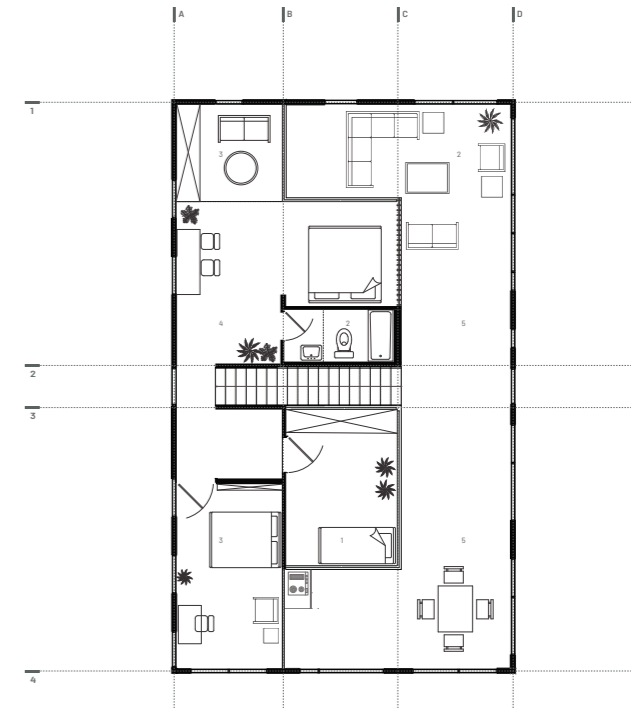
What factors in architectural design increase the **value** of the building?



0 | 1 | 5 | 10 |

Ground Floor

1 Entrance	4 Kitchen	7 Office
2 Living Room	5 Bathroom	8 Yard
3 Dining Room	6 Parking	9 Inbetween Space



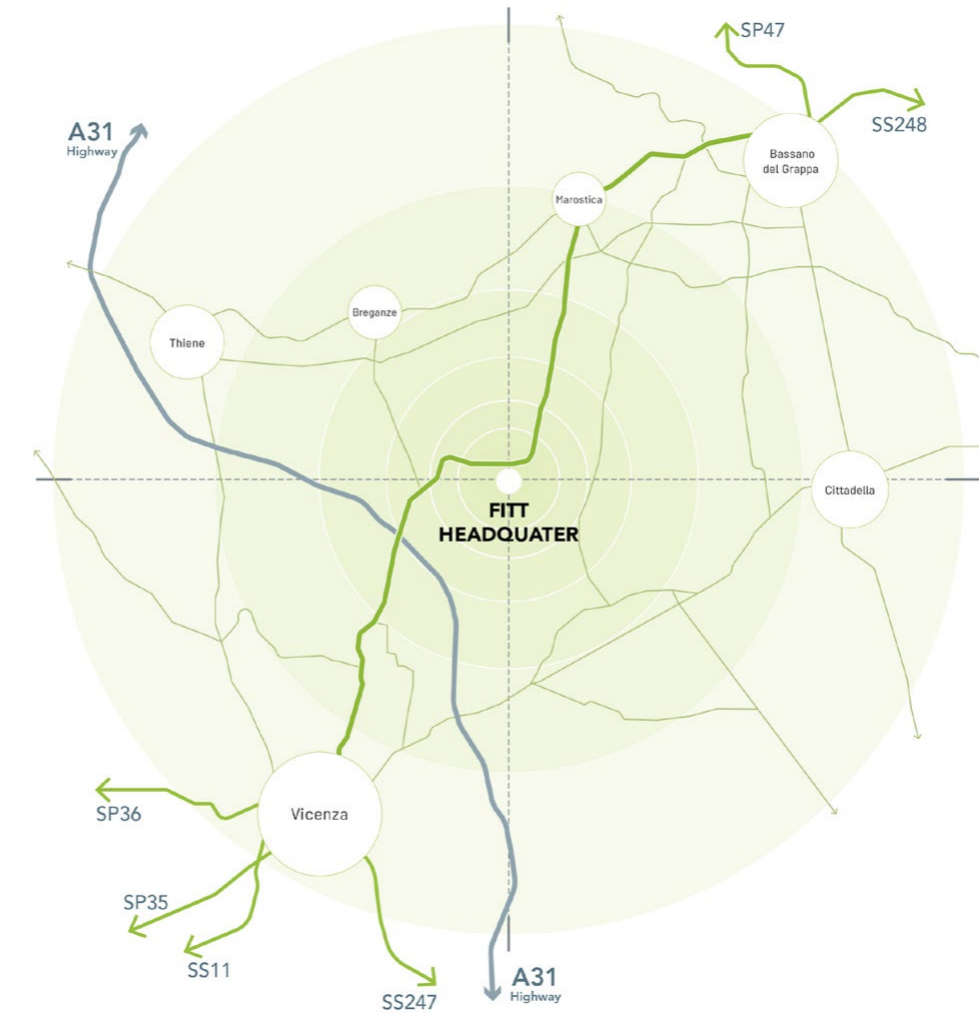
0 | 1 | 5 | 10 |

1st Floor

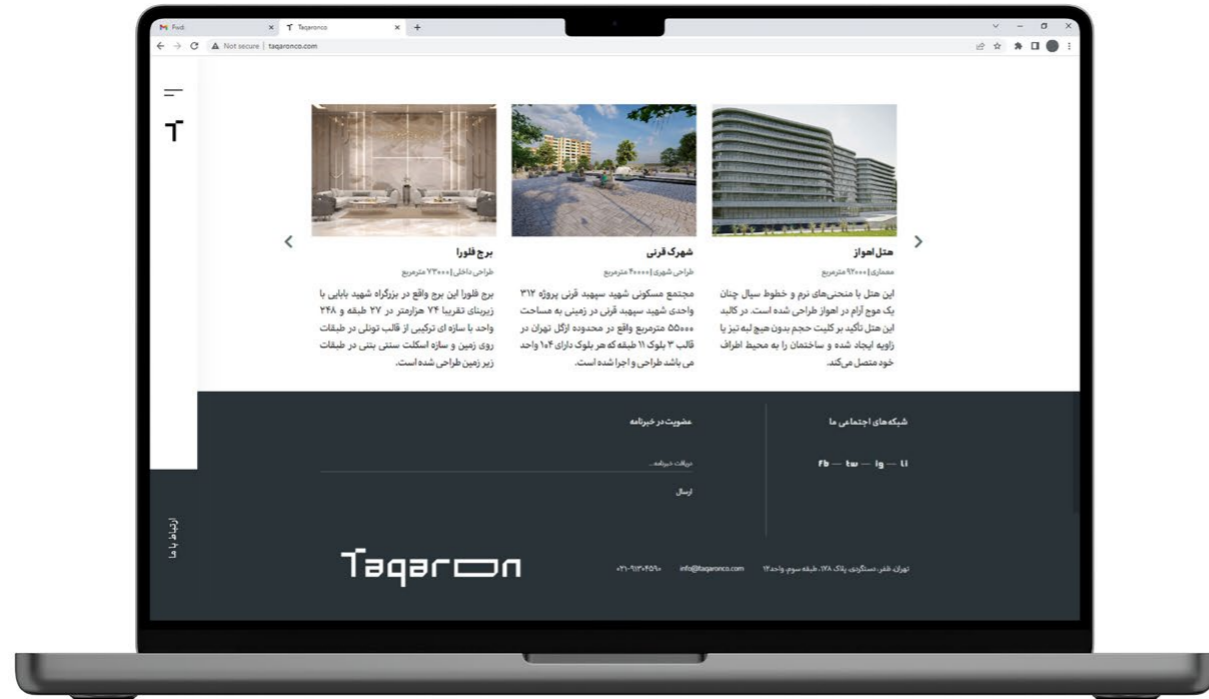
1 Bedroom	3 Conditional Space	5 Inbetween Space
2 Master Bath	4 Master Bedroom	



What is the best **scenario** for building | space development?



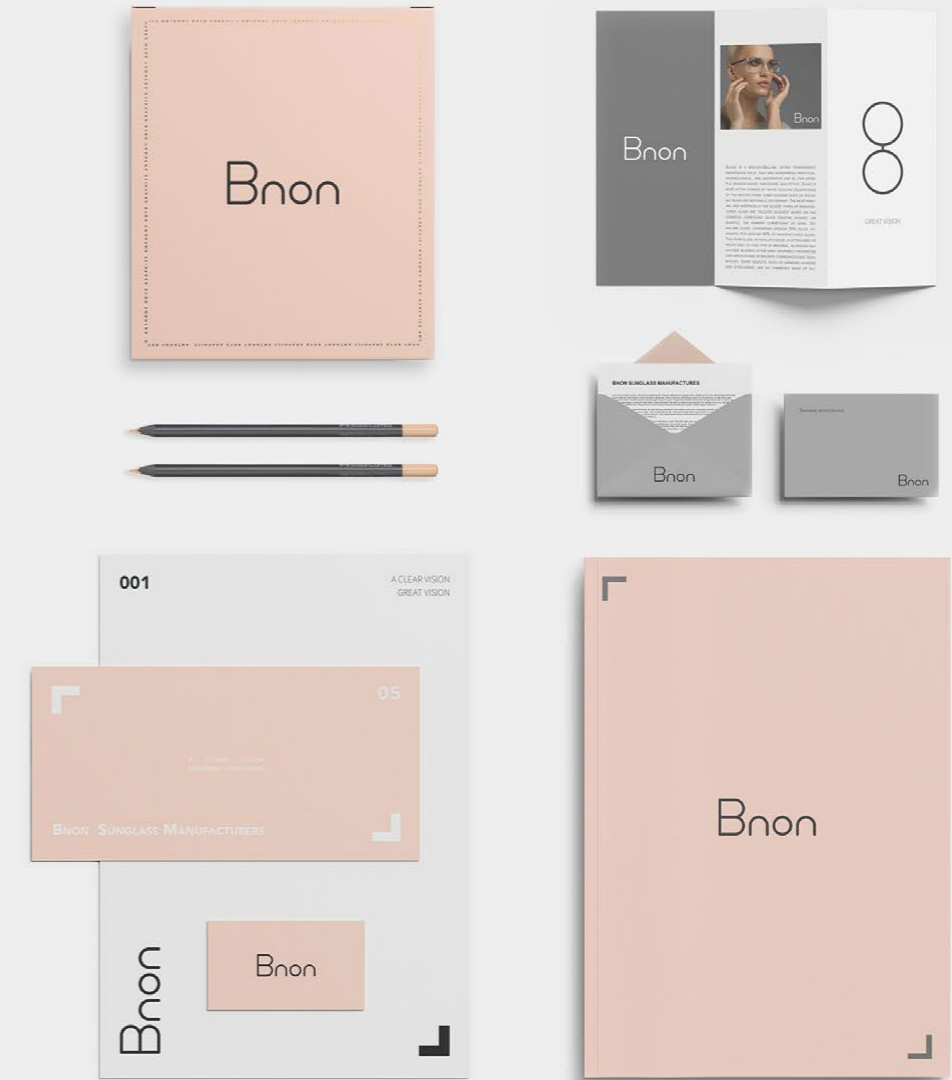
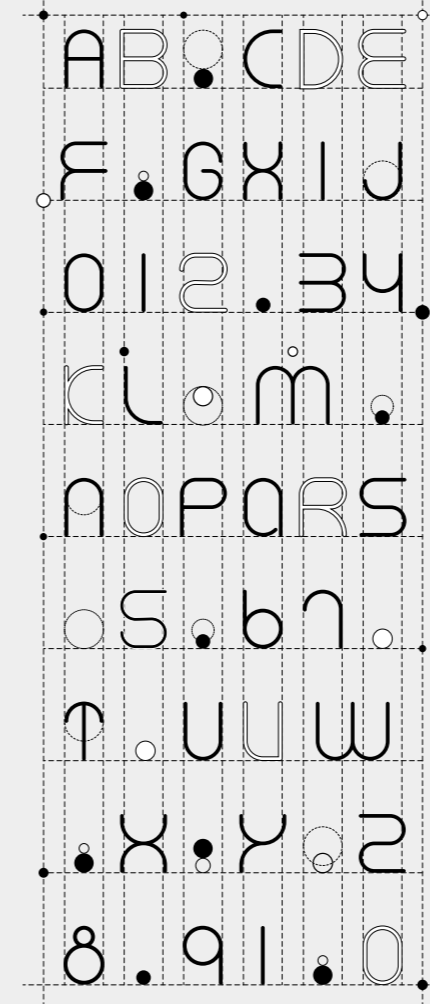
How does digital customer experience help the business | brand **value** grow?



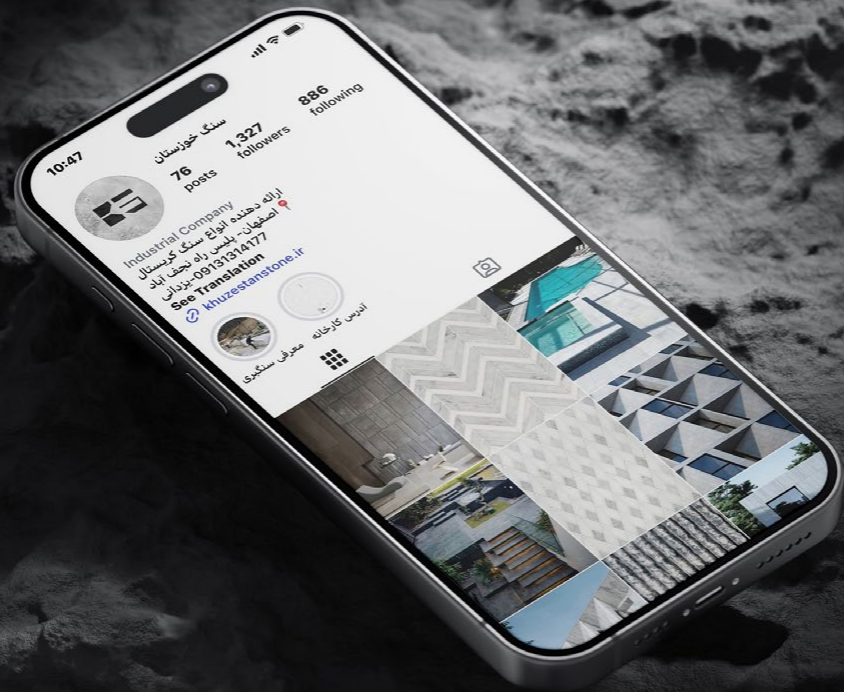


What is the perfect **name** for a company | brand | building | product?

How are business and product accurately reflected by **visual identity design**?







شماره تماس: ۰۹۱۳۱۴۱۷۷
 آدرس: اصفهان- بلوار سبزه سنگ
 پست: ۳۵۱۳۱۳۱۳

کارخانه سنگ خوزستان

مدیریت محترم شرکت عمران گستر آی‌اچ‌اچ:

با سلام و نهایت احترام:

به استحضار میرساند کارخانه سنگ خوزستان در سال ۱۳۵۳ تأسیس و شروع به کار نمود. در ابتدا این کارخانه به صورت سنتی اداره می شد و با حجم تولید کم و در عین حال تنوع سنگی زیاد مانند سنگ سیاه نجف آباد، لاشتر، آژند، الیگودرز، تبریز، تاروتین و... (که عمدتاً به صورت درپوش تولید می شد.

در سال ۱۳۶۰ به سبب کثرت شرکتها و اختلافات مابین آنها تصمیم گرفته شد سالن جدیدی در کنار سالن قبل تأسیس و شرکت به تعداد کمتری تقسیم شوند که به سنگبری خوزستان ۱ و ۲ نام گذاری شد. رفته رفته با توجه به نیاز بازار کارخانه از کثرت و تنوع تولید گانت و به تولید یک نوع سنگ پرداخت. در حال حاضر سنگبری خوزستان ۱ و ۲ با مدیریت واحد اقدام به تولید سنگ گریستال لایبند (نیمه و روشن) به صورت تایل و در تنوع تولیدی سبک، پوشهر، چرمی، جیشه، اسگریج و... می باشد.

لذا این کارخانه در زمینه هایی که در بالا ذکر شد، آمادگی خود را جهت همکاری با آن شرکت محترم اعلام می دارد. امید است با همکاری های سوده مند در آینده بتوانیم سبب بهبود در نوبل به اهداف باشیم.

با آرزوی توفیق روز افزون

محسن پزانی
 مدیر عامل کارخانه سنگ خوزستان

شماره تماس: ۰۹۱۳۱۴۱۷۷
 آدرس: اصفهان- بلوار سبزه سنگ
 پست: ۳۵۱۳۱۳۱۳



KHUZESTAN STONE

کارخانه سنگ خوزستان محسن پزانی

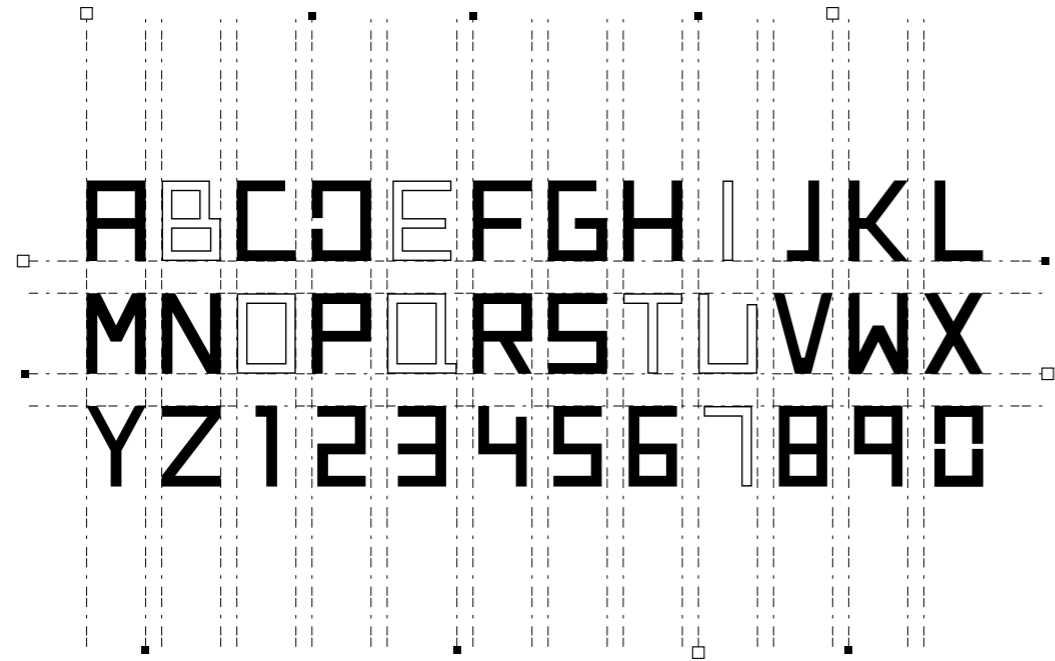
تلفن: ۰۹۱۳۱۴۱۷۷

www.khuzestanstone.ir

info@khuzestanstone.ir

اصفهان- بلوار سبزه سنگ
 آدرس: اصفهان- بلوار سبزه سنگ



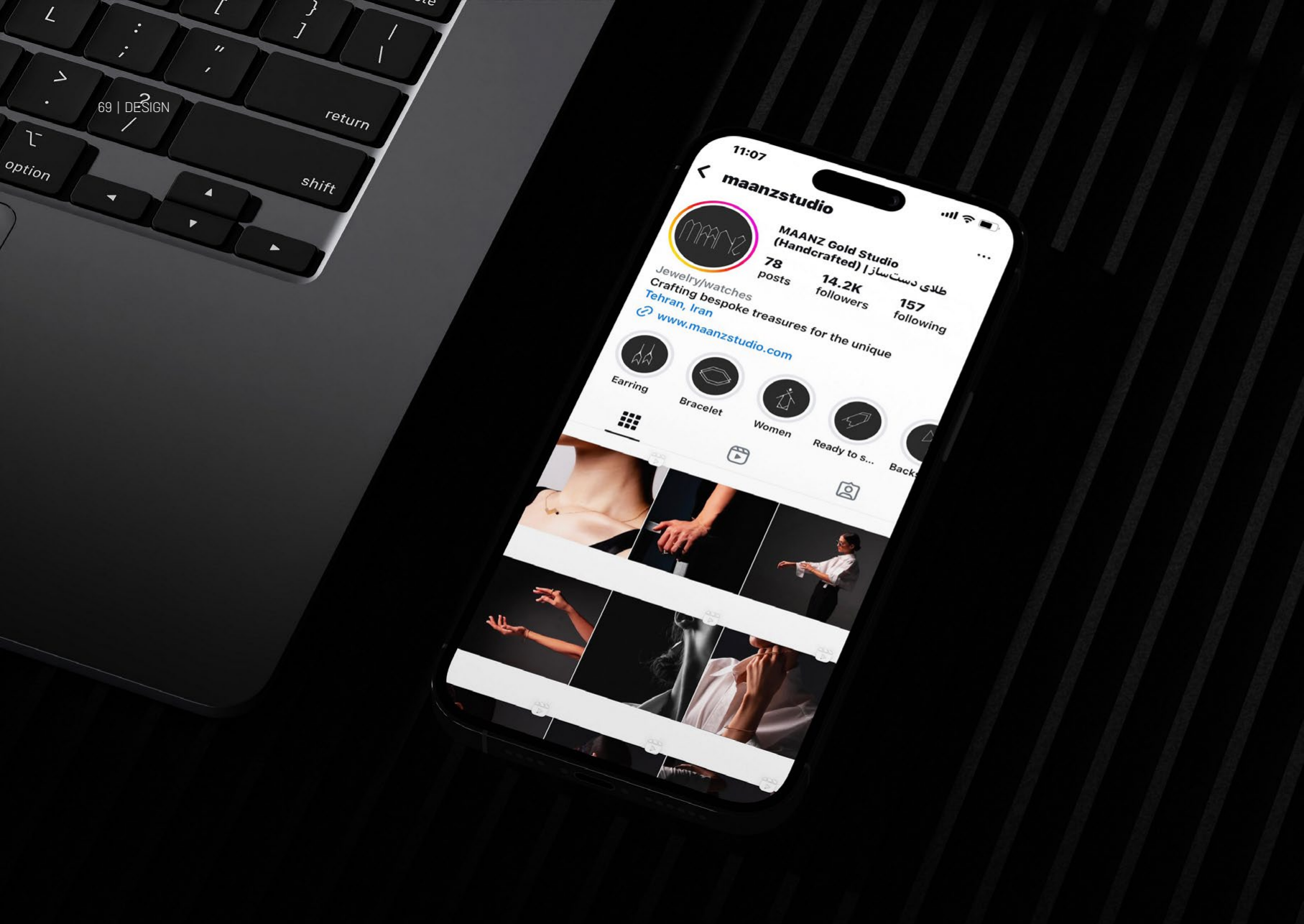


How can I create a **memorable** customer experience?

BOUTIQUE
APARTMENT 7



How to help the **growth** of business | product value by **visual identity design**?





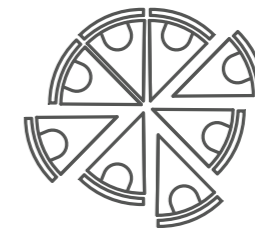
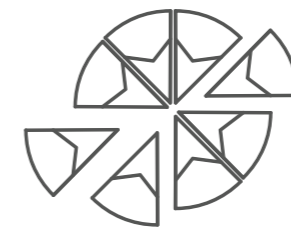
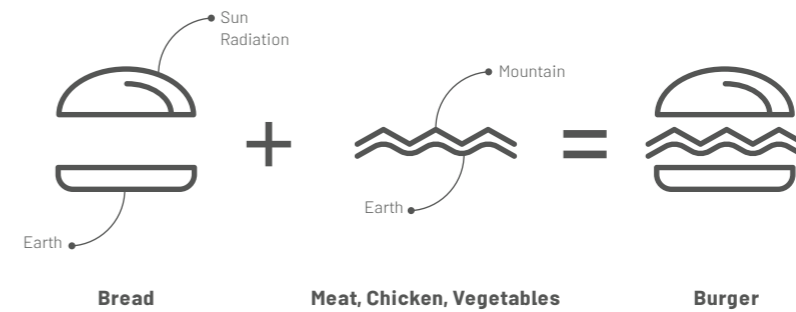
When is the real need for branding **formed** and **evaluated**?

How are the business and product accurately reflected through **visual identity design**?



How is the best expression of **brand architecture** obtained?







What are the best **Materials** for fundraising?



mineteams.com | Info@mineteams.com | +98 990 22 11 412

Tehran. Iran | [@Mineteams](#) | [Linkedin.com/mineteams](https://www.linkedin.com/company/mineteams) | [Instagram.com/mineteams](https://www.instagram.com/mineteams)

CONTACTS



گروه رشد، توسعه کسب و کار
Growth Group, Business Development

May 2026

فروردین ۱۴۰۵

