

Growth / Design Profile



2025

Creation | Execution | Performance | Development | Expression | Experience

EMBRACE CHANGES

CREATE OPPORTUNITIES

Who We Are

01

- 01 About Us
- 02 Strategy
- 03 Broad Geographic

What We Do

02

- 05 Activities
 - Growth
 - Design

How We Do

03

- 07 Clients
- 11 Teams

Growth

04

- 13 GROWTH
 - Business Creation
 - MINE 2019
 - ICS Platform 2021
 - 17 Maanz 2021
 - 21 Abra 2022
 - Khuzestan Stone 2025
 - 23 Kariz 2025
 - Himo 2022
 - Taqaron 2024
 - 27 Wiink 2023
 - Business Execution
 - 29 Khuzestan Stone 2021
 - Baft Shahr 2023
 - 33 Business Performance
 - Taqaron 2022
 - Business Development
 - Basilico 2020
 - Khuzestan Stone 2021

- Zagross 2022
- Diako 2022

Design

05

- 43 DESIGN
 - Experience | Physical
 - Telecommunication Exhibition 2014
 - Iran University of Science and Technology 2015
 - Zarivar Cafe Baar 2016
 - Science and Technology Park 2016
 - Cibo 2016
 - Farahani Residential Apartment 2016
 - 47
 - House No.01 2017
 - Indigenous Canadian House 2017
 - Standard Laboratory 2017
 - Zaferanie Mall 2017
 - Mana Collection 2017
 - Northern Garden Park 2017
 - Yahyaee House 2018
 - Plasco 2018
 - Family House 2018

- 51 Providential House 2019
- Arak Innovation Factory 2019
- Karun Collection 2019
- 55 Basilico 2020
- Kumush Collection 2020
- Damavand Collection 2020
- Era Collection 2021
 - Experience | Digital
- MINE 2019
- ICS Platform 2021
- Pragmatica 2022
- 59 Taqaron 2022
 - Expression | Identity
- Badii Leather 2017
- MINE 2019
- 63 Bnon 2019
- ICS Platform 2021

- 65 Khuzestan Stone 2021
- 69 Boutique Apartment 2021
- 73 Maanz 2021
- 77 Kaaj 2022
- Yas Beauty Clinic 2024
- 81 Zagross 2022
- Taqaron 2022
- Wiink 2023
 - Expression | Interaction
- ICS Platform 2021
- Taqaron 2022

Contacts

06

- 85 Website
- Email
- Call
- Address
- ID
- Channels

CVICONTENT

**MINE, where design
and growth come together to
drive your business forward.**

Our team of experts;

specializes in providing comprehensive and innovative **solutions** to help your business thrive.

From architecture design and brand identity to channels design, From business ideation and modeling to business development support, we have the tools and expertise to take your business to the **next level**.

We believe that;

embracing changes and creating opportunities is the key to reach new **heights**.

Let us help you unlock your full potential and bring your vision to **life** together.

Our firm helps bridge the gap between the **present** and the **possible**, what is and what can be.

ABOUT US

STRATEGY

%10 CANADA EXPERIENCE

%5 USA EXPRESSION

%15 EUROPE EXPERIENCE
BUSINESS CREATION
BUSINESS EXECUTION

BROAD
GEOGRAPHIC

EXPERIENCE | EXPRESSION
BUSINESS CREATION
BUSINESS EXECUTION
BUSINESS PERFORMANCE
BUSINESS DEVELOPMENT

IRAN %70

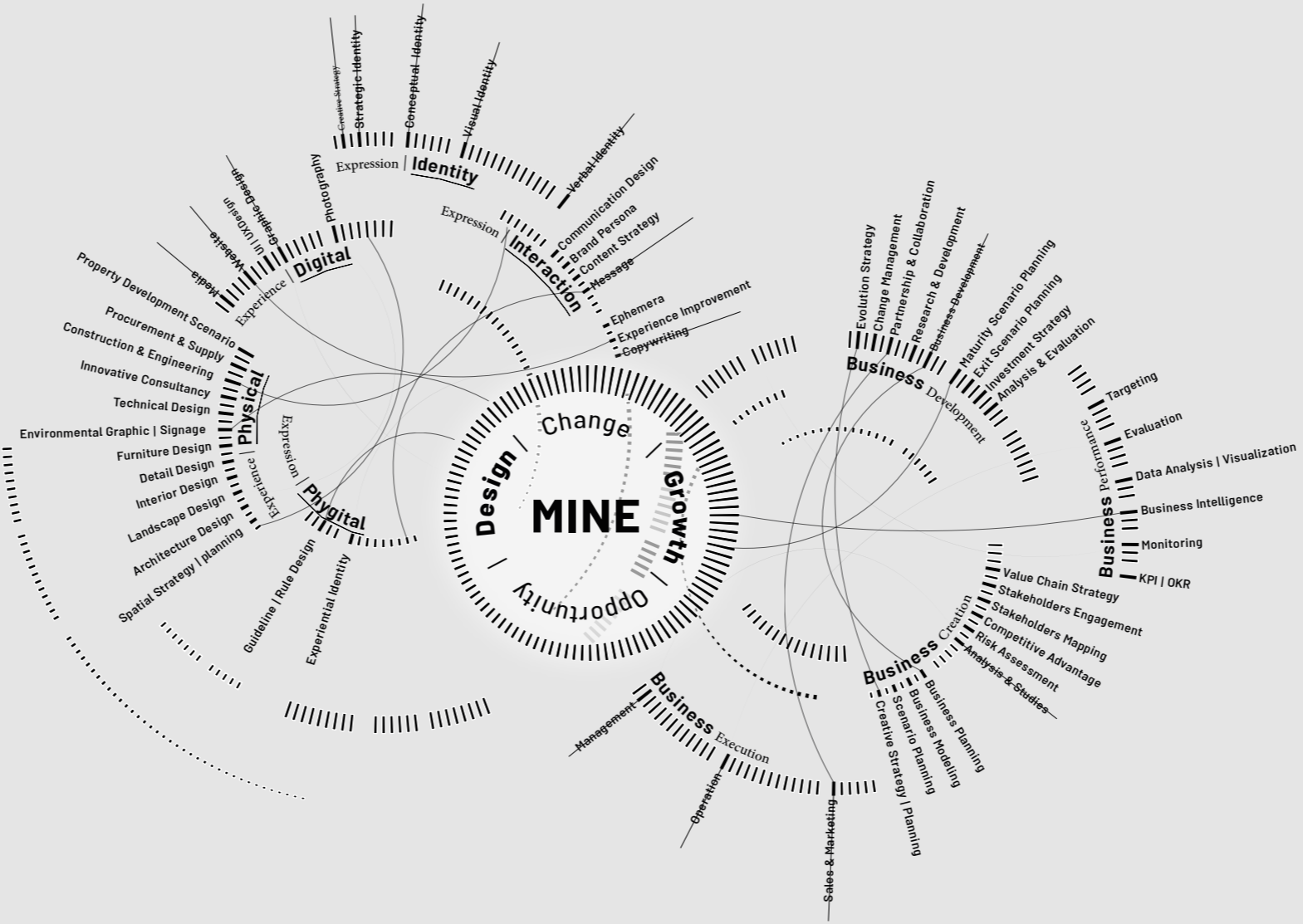


We believe **Design** should be effective, and unforgettable.

Let us help you create a thrilling **experience** and precise **expression** that connects you with your audience.

- Architecture Design
- Environmental Graphic
- Innovative Consultancy
- Website Design
- Graphic Design
- Visual Identity
- Creative Strategy

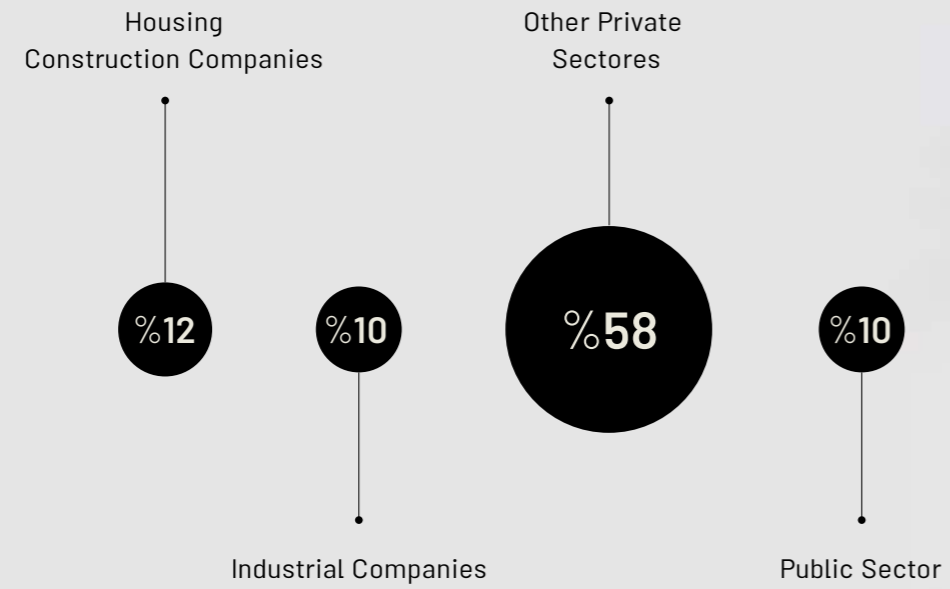
ACTIVITIES



Growth can be a journey, but it doesn't have to be a daunting one.

We're here to help you navigate the path to success with customized **strategies** and expert guidance every step of the way.

- Business Modeling
- Risk Assessment
- Value Chain Strategy
- Management
- Operation
- Business Intelligence
- Investment Strategy



MINE's business model is based on being close to our **clients** and **experts**. We are ready to create value for the clients and partners in design and growth.

CLIENTS

Kariz Investment Management | Baft-E-Shahr Consultant Engineering Company | Velenjak Boutique Apartment | Taqaron Consultant Engineering Company | Diako Group | Zagross Food Industry Group | Maanz Gold Studio | Tabriz Municipality | Arak Municipality Investmnet Organization | Arak Machine Sazi Corporation | FITT Headquarter | Khuzestan Stone Factory | CIBO Cafe & Restaurant | Science And Technology Park | Rhyterna Modular | Plat 0.8 | Markazi Standard Labratory | Graph Business Development Firm |

Clients And Companions

We are a team of inspired and diverse individuals, driven by inclusion and guided by **purpose**.

Our passion for purposeful, sustainable work fuels our commitment to shaping our **communities** and the **future**.

We pride ourselves on our collaborative **approach**, thriving on challenges and unconventional thinking.

Our team is made up of a network of experts who channel our curiosity into creating innovative solutions to complex issues.

Pro-Team Member

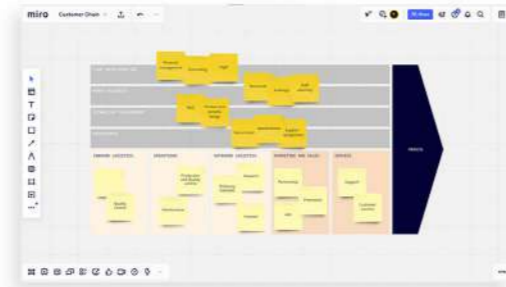
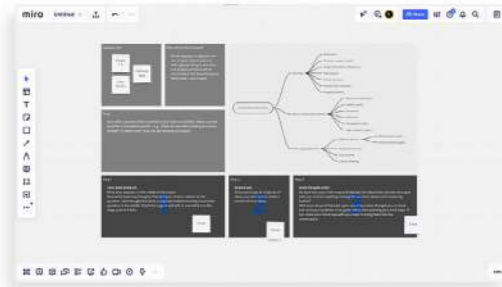
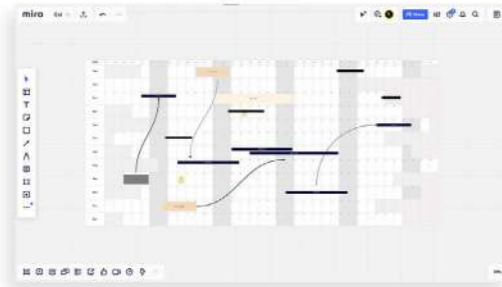
MohamadMahdi SabetFard | Yeganeh Yektaeian

TEAMS



GROWTH





GROWTH

Business **Creation**

We collaborate closely with entrepreneurs to ideate and model businesses that are uniquely tailored to their vision, helping them to bring their ideas to realities.

- Business Modeling
- Business Planning
- Risk Assessment
- Stakeholders Mapping
- Value Chain Strategy

Business **Performance**

We measure and analyze data to identify areas for improvement, helping businesses to increase their performance, and maximize their profits.

- Data Analysis
- Business Intelligence
- Targeting
- Monitoring
- KPI | OKR

Business **Execution**

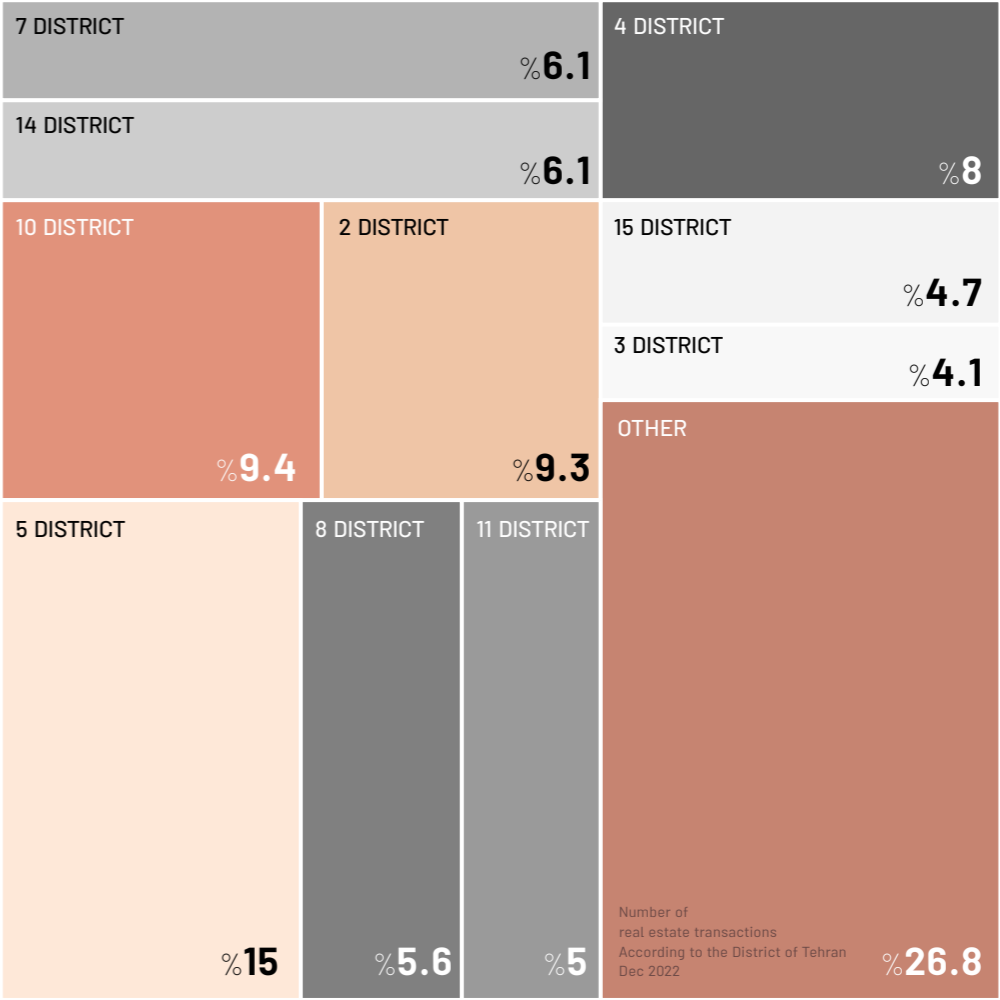
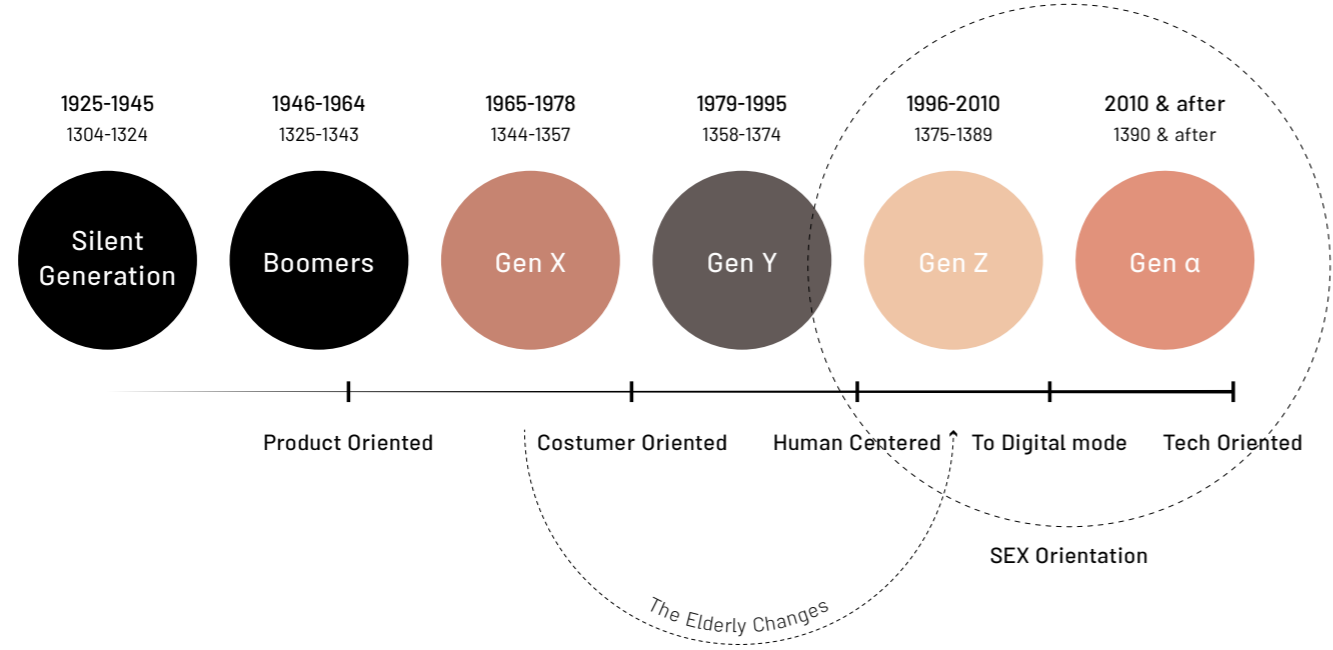
We provide end-to-end business plans and support for better execution, allowing businesses to efficiently and effectively execute their strategies, ultimately helping them achieve their goals.

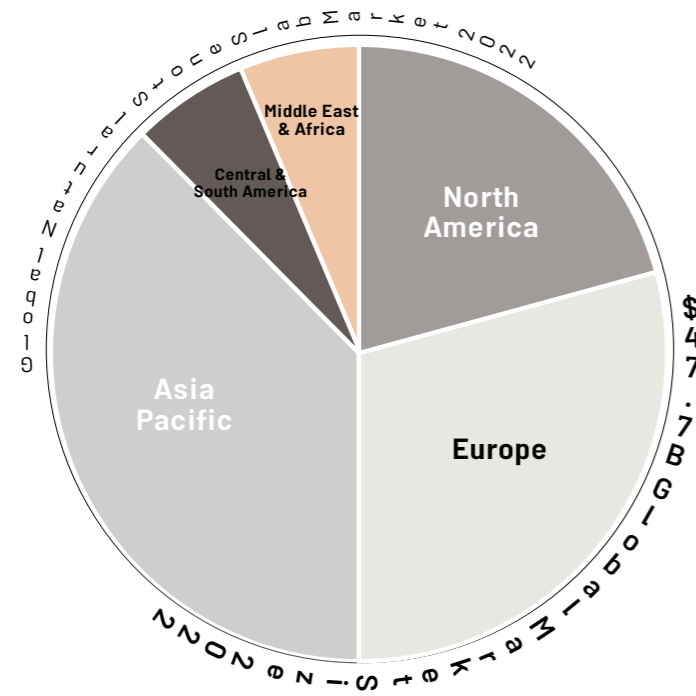
- Management
- Operation
- Sales
- Marketing
- Planning

Business **Development**

We facilitate the growth and development of businesses' products or services by providing comprehensive strategic solutions, that covers the entire process from inception to exit strategy.

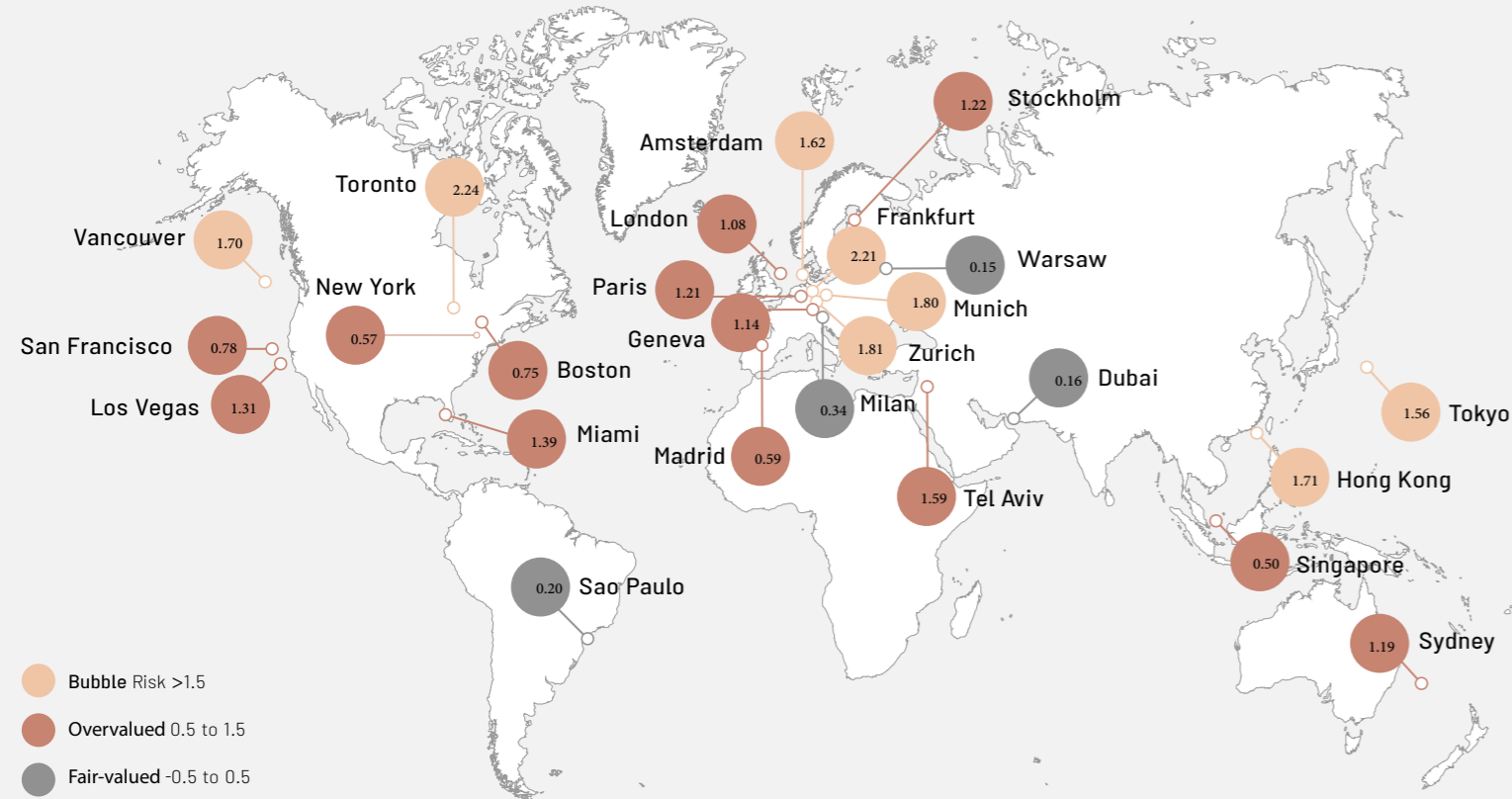
- Change Management
- Business Development
- Investment Strategy
- Exit Scenario Planning
- Analysis & Evaluation





How should I design and implement a creative **marketing** and **sales** plan?



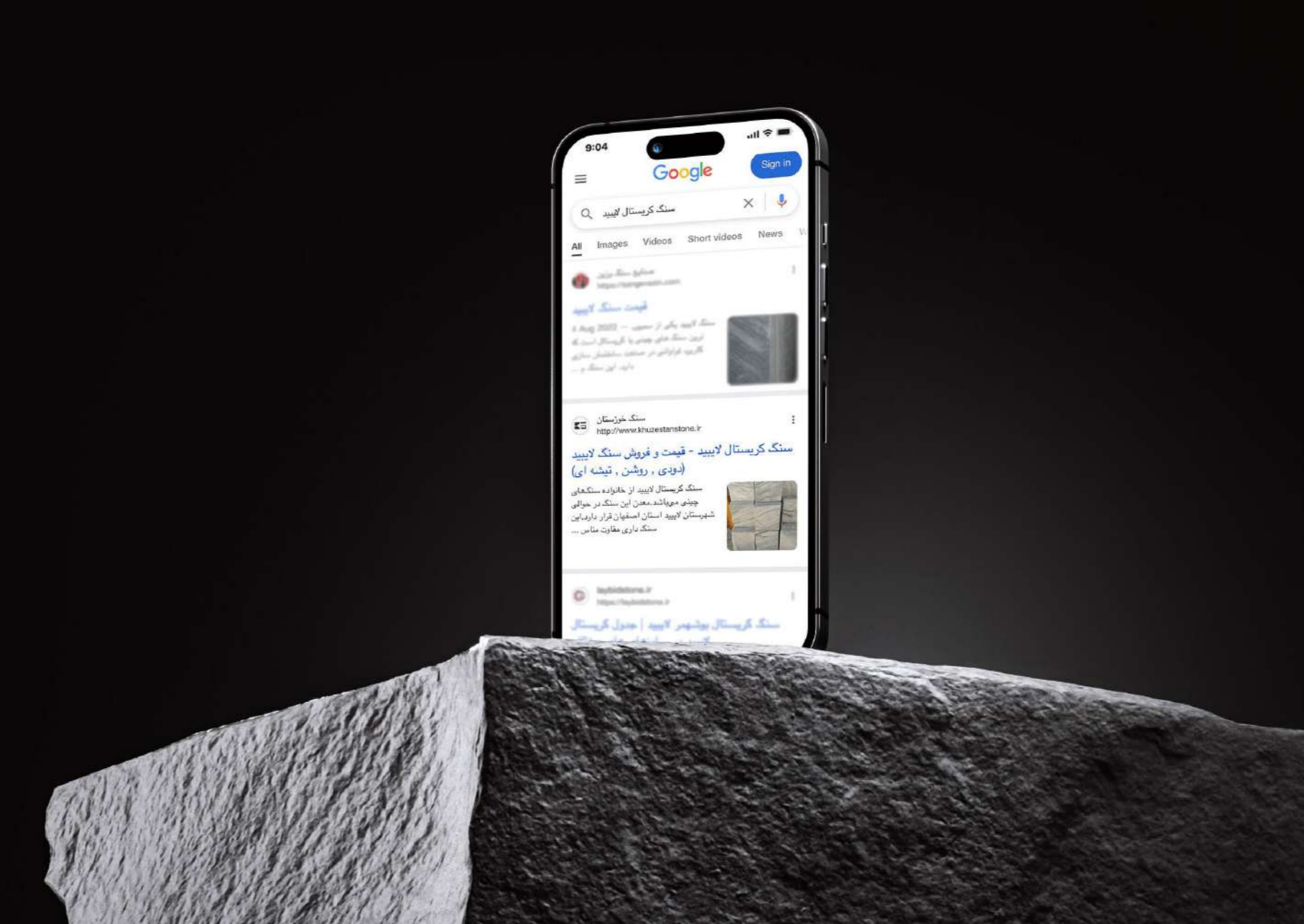


How to create a **scenario** for starting a business?

What are the real business **risks** and how are they **evaluated**?

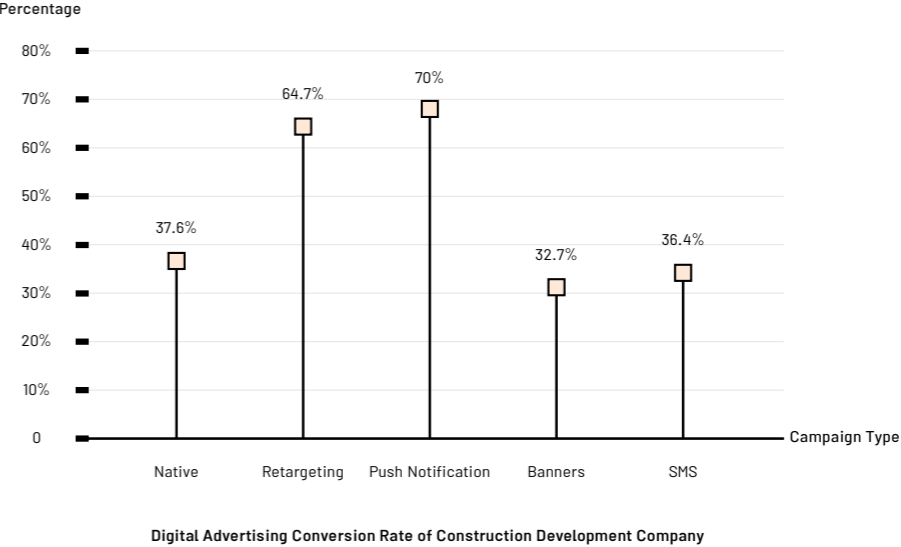
How should I deal with **exit** and **end** of business scenarios?

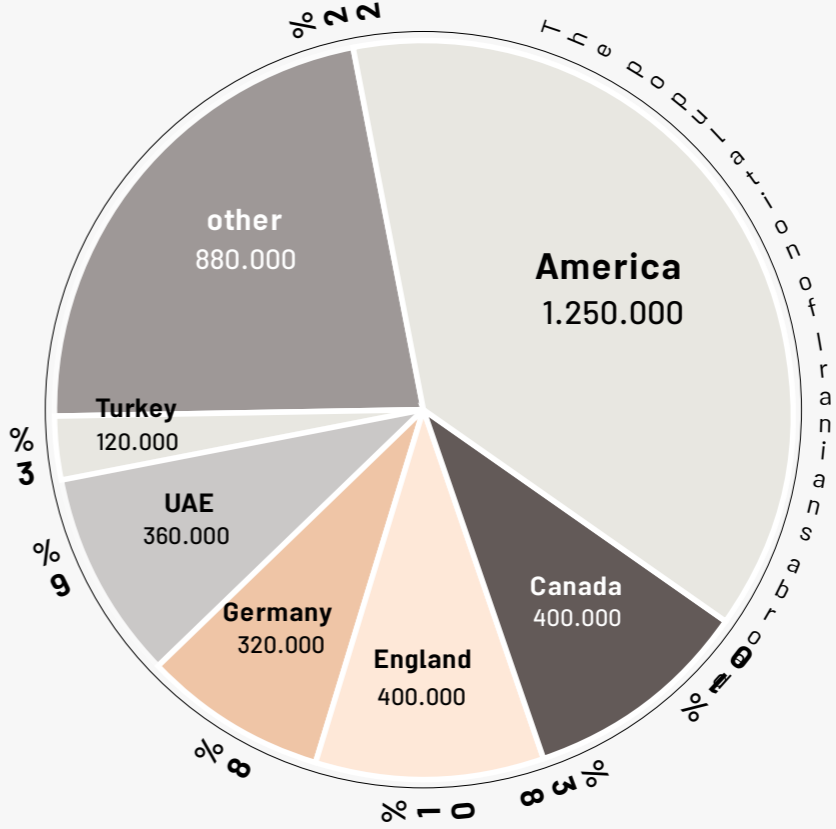
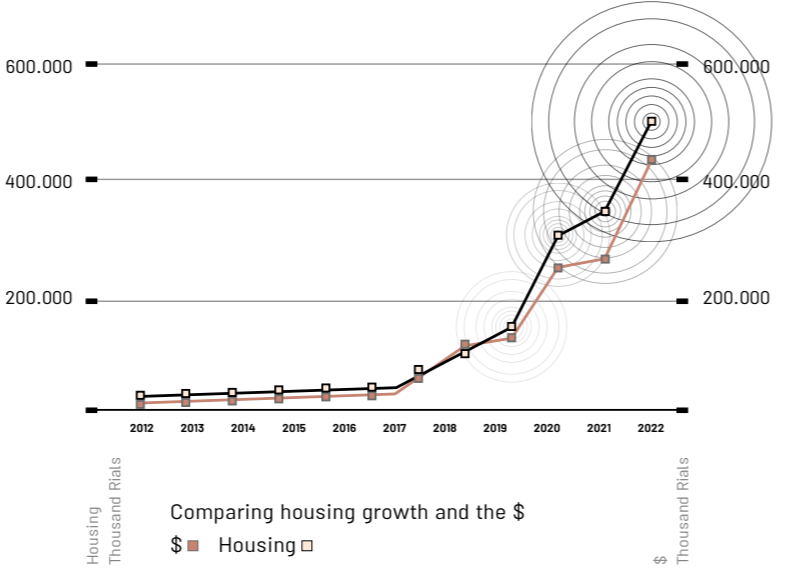
How does **SEO** help increase targeted visitors and convert them into customers?

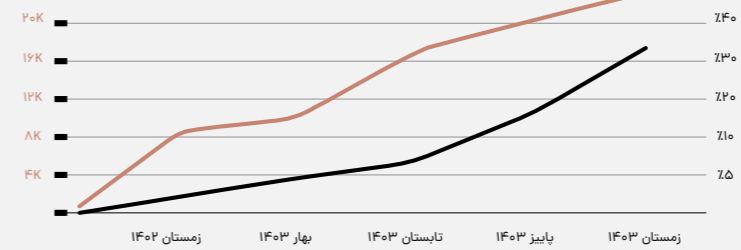
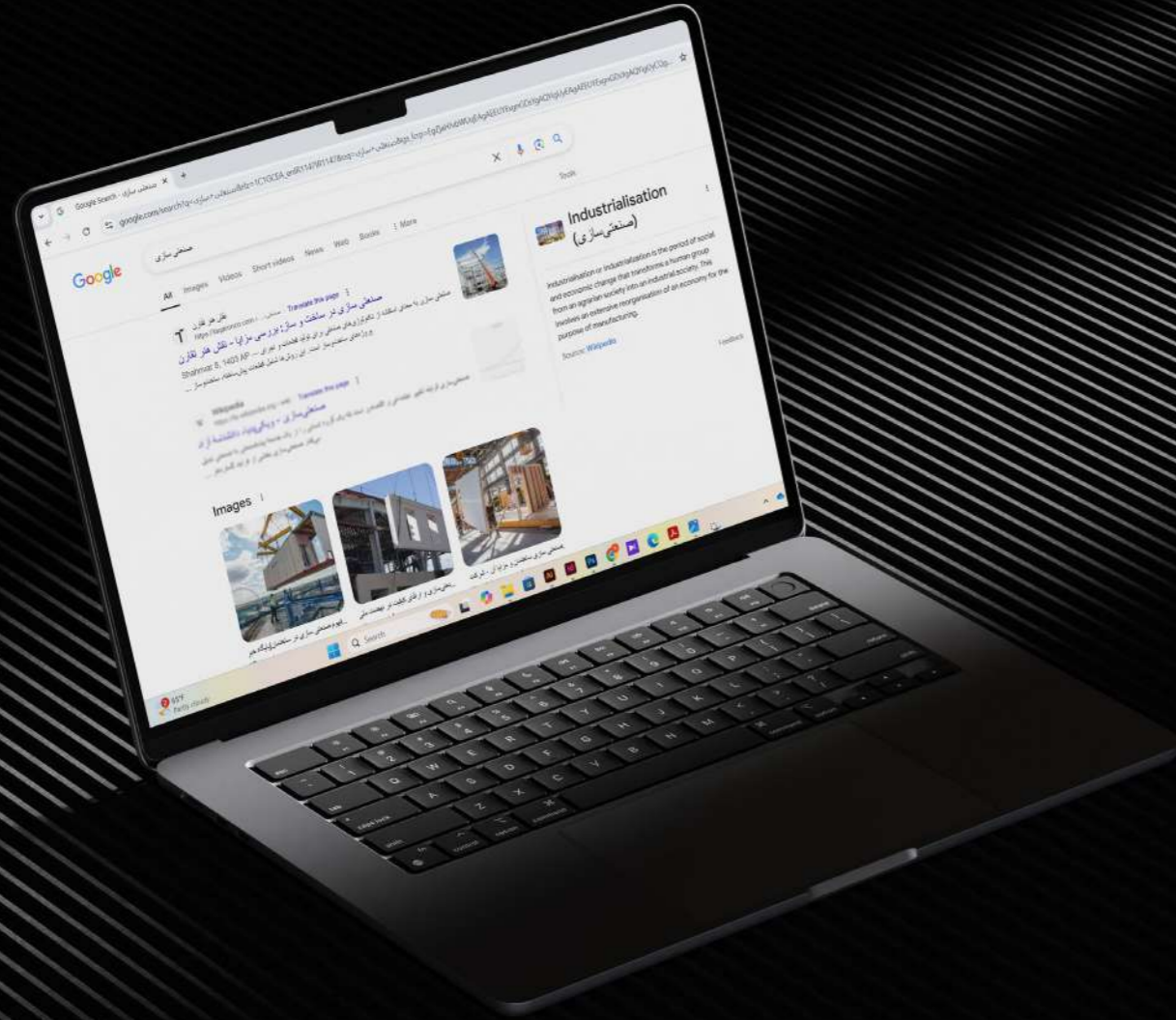


How to Target Audiences Through Digital Marketing?

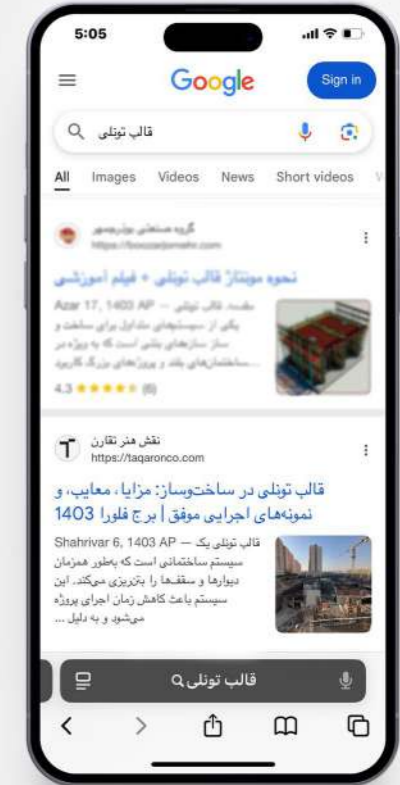
Which Digital Marketing Campaign is Right for Every Business?





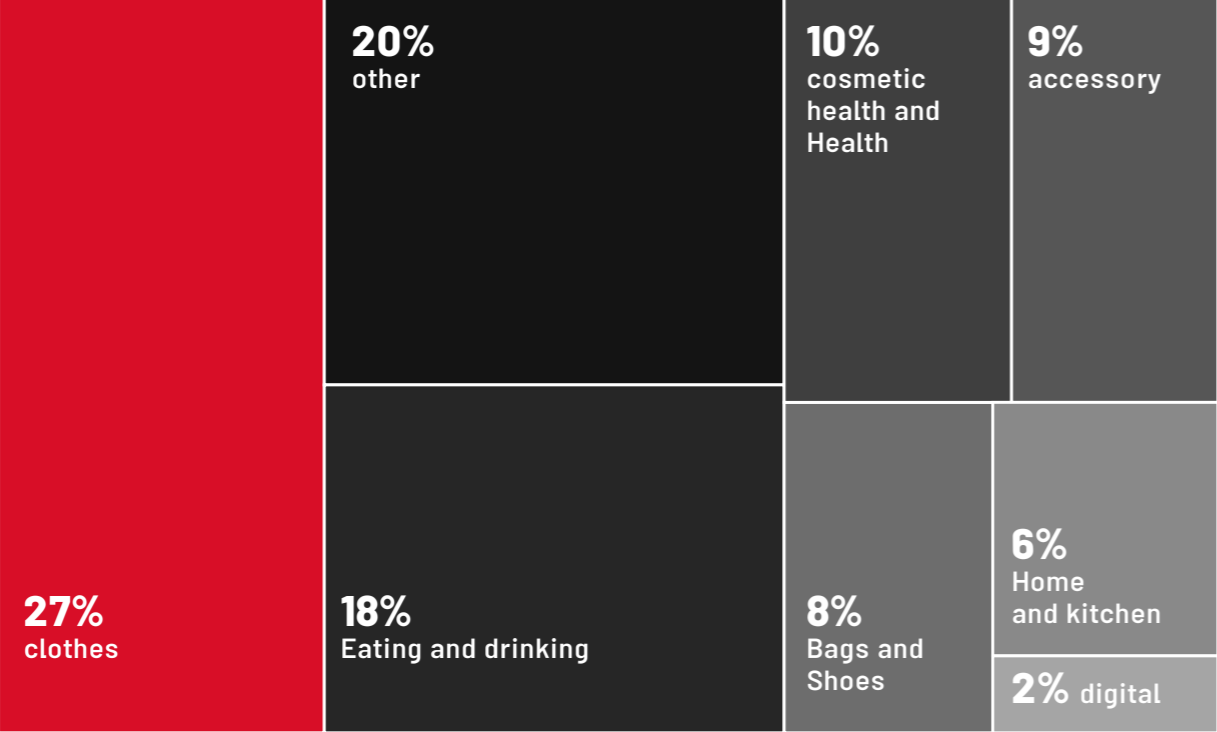


SEO Effect
Average CTR — Total Impressions —

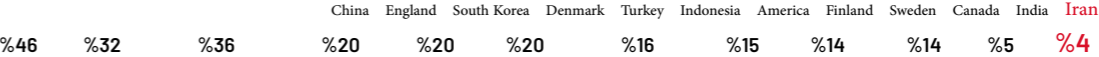
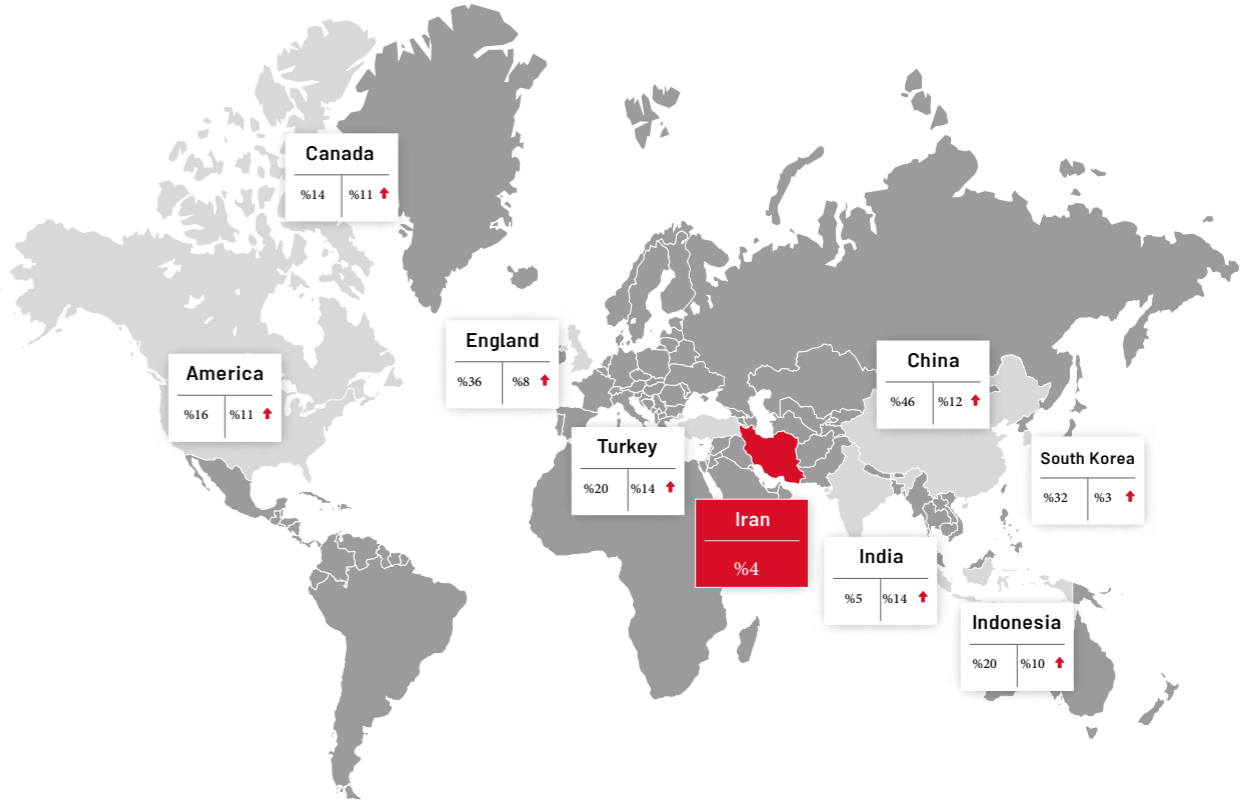


wink

How business intelligence helps to achieve profitability and effectiveness?



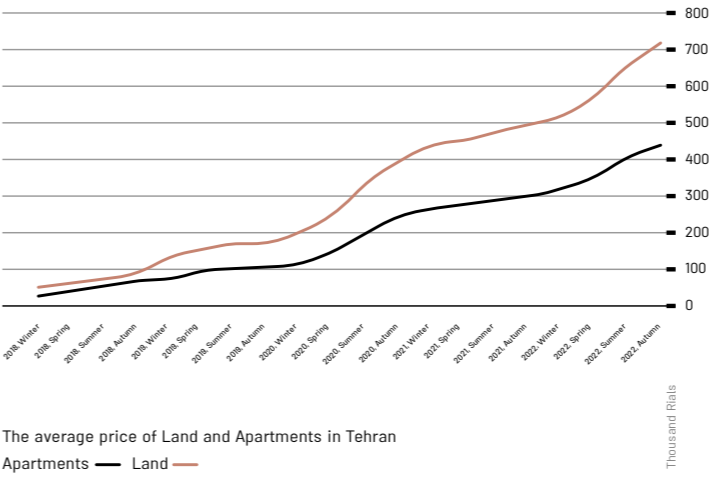
The field of activity of Iran's Instagram stores in 2022

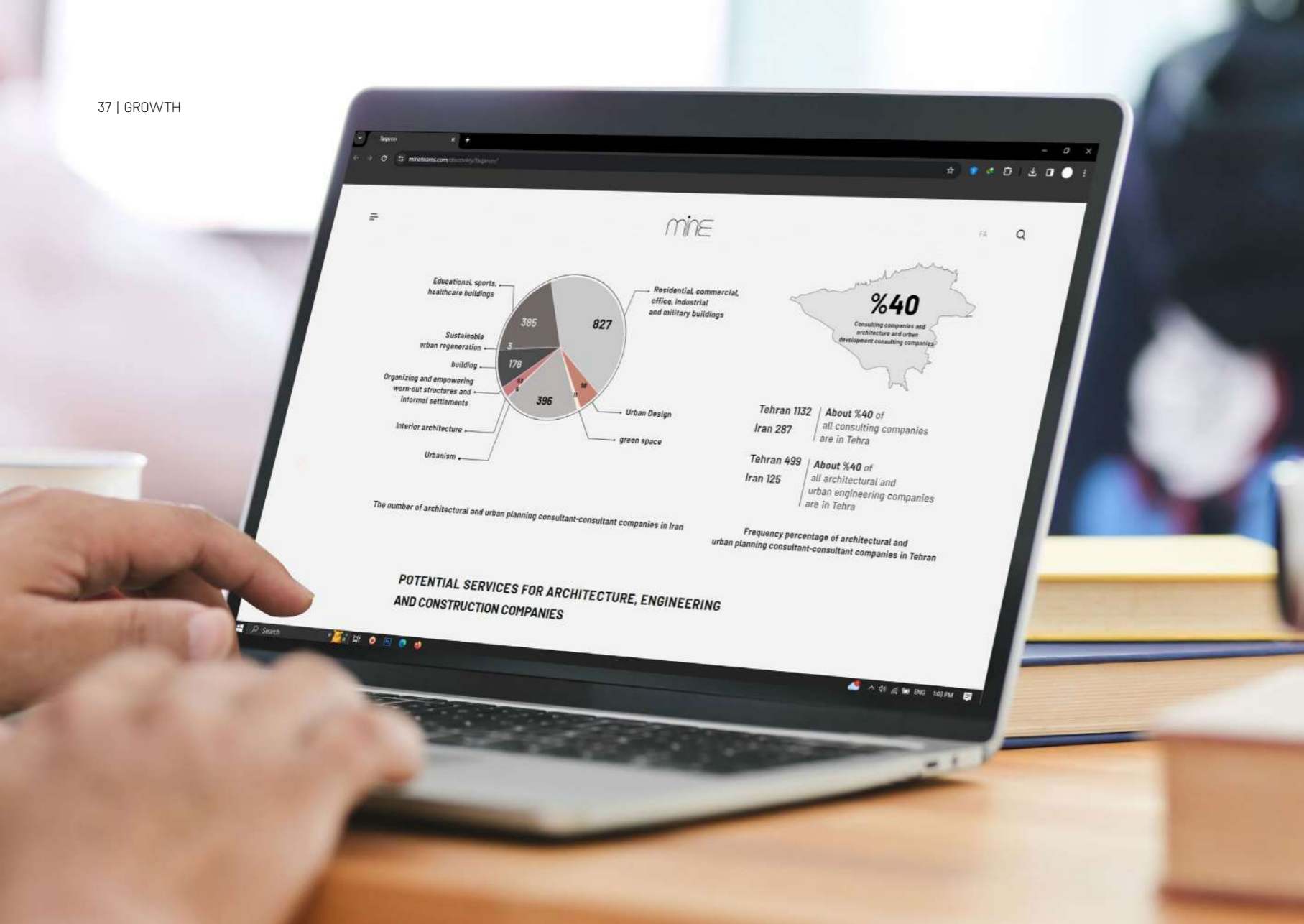


Expected annual growth rate in the next 5 years

How can I make **processes, tasks** and **relationships** within the business effective?

How is **innovative targeting** achieved at each stage of business?





Specialized engineering solutions

Integrated project collaboration and delivery

Data analysis and artificial intelligence

Prefab and modular construction

Integrated design and construction

Workforce and skill development

Digital transformation

Sustainable and green building design

Construction technology and innovation

Infrastructure development and management

Smart cities and urban planning

Facilities and asset management

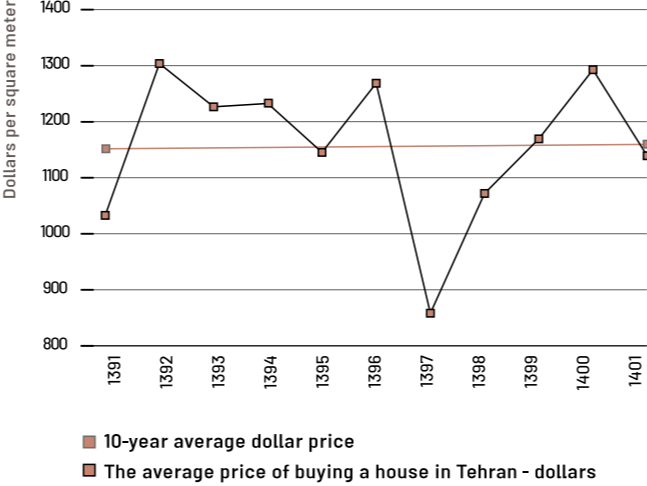
Renovation and retrofitting

Advanced materials and techniques

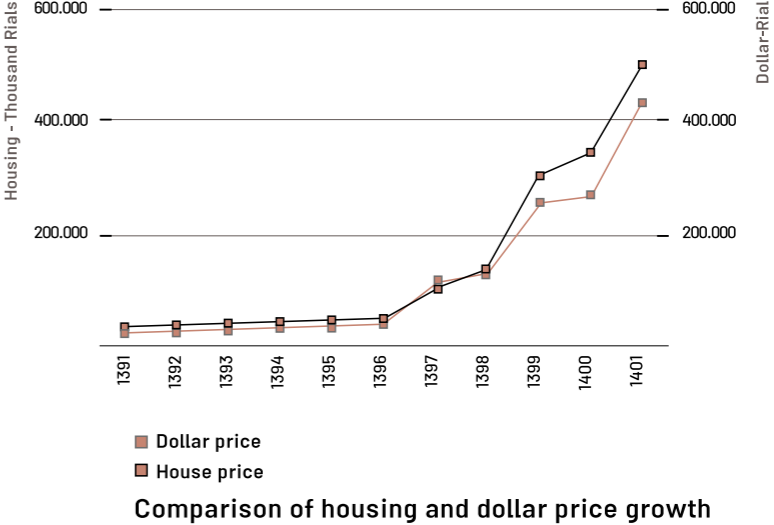
How can I verify and manage the organization's **data and knowledge**?



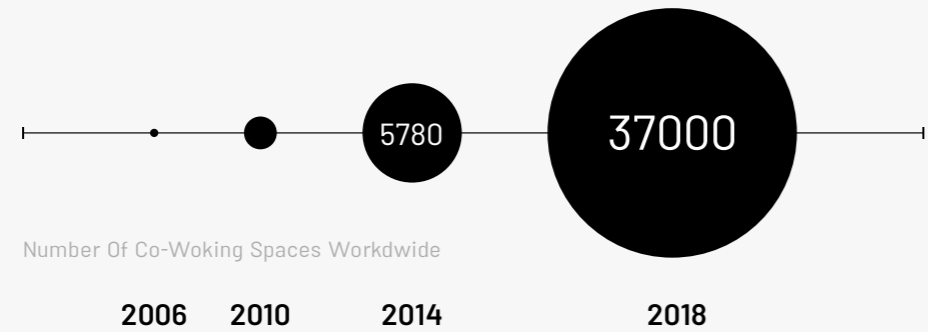
The frequency of residential building construction permits in urban areas of the country



The dollar price of housing in a 10-year period

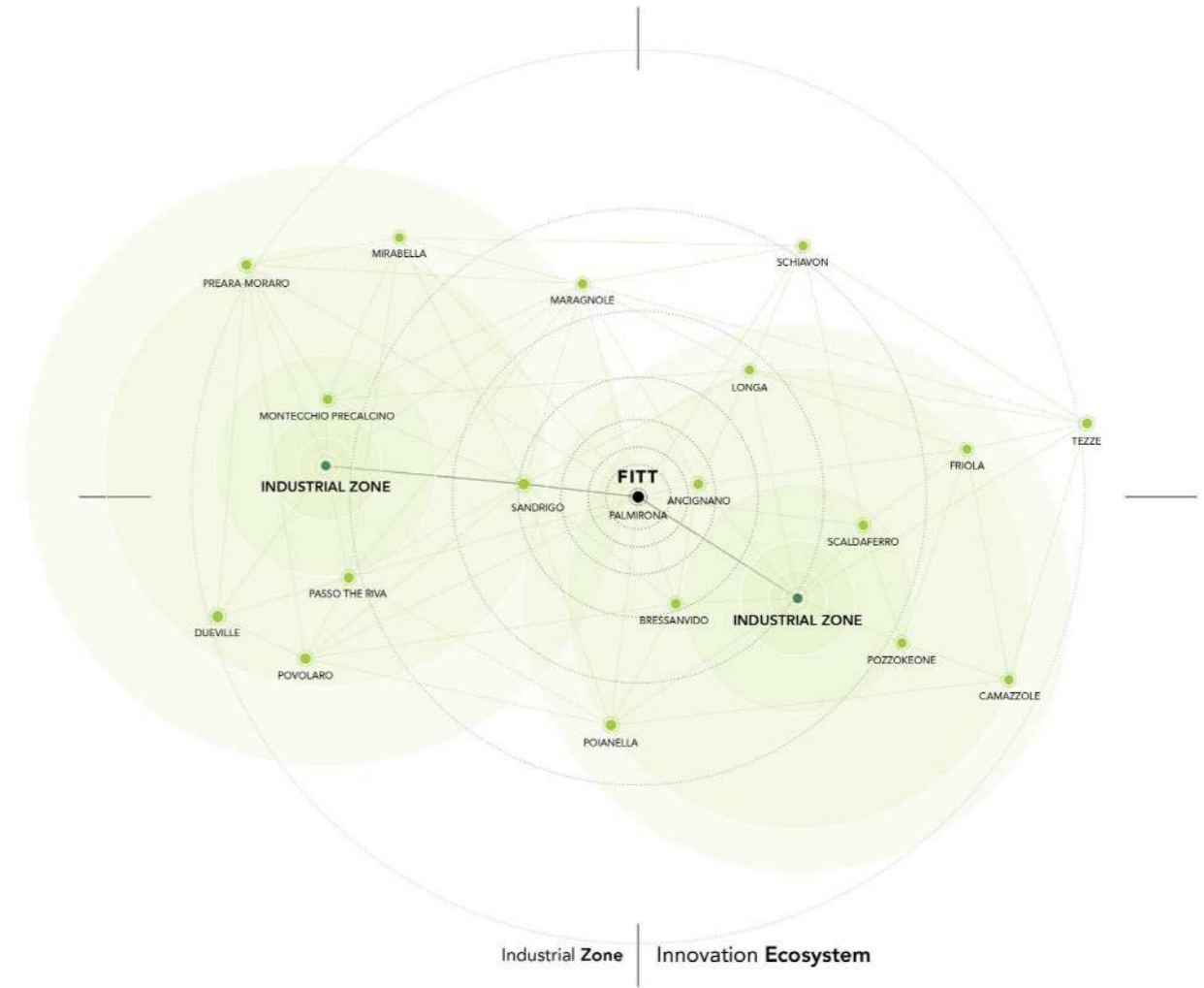


Comparison of housing and dollar price growth

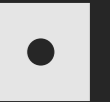


Number Of Co-Working Spaces Worldwide

How can I align team and processes with **business goals**?



DESIGN



Experience

We create immersive digital and physical experiences from architecture and spatial design to online channels design and web development, that leave a lasting impression on your customers.

- Architecture Design
- Environmental Graphic
- Innovative Consultancy
- Website Design
- Graphic Design

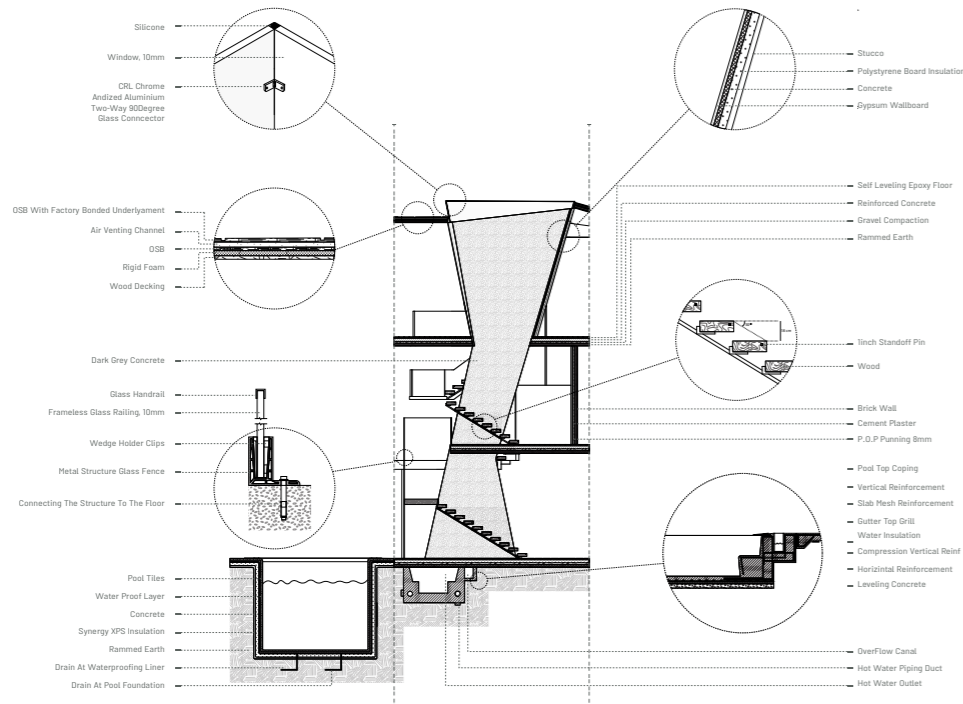
Expression

We enable brands to effectively communicate their message with captivating and visually striking designs, setting them apart in a competitive market, and showing their unique identity.

- Visual Identity
- Creative Strategy
- Verbal Identity
- Conceptual Strategy
- Experience Improvement

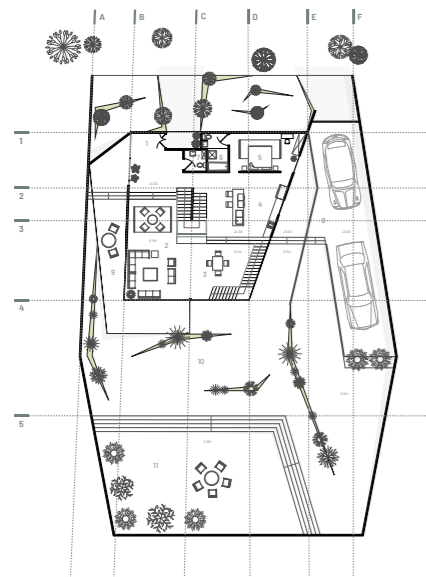
DESIGN

What is the best way to design **interaction** and **communication** with customers ?



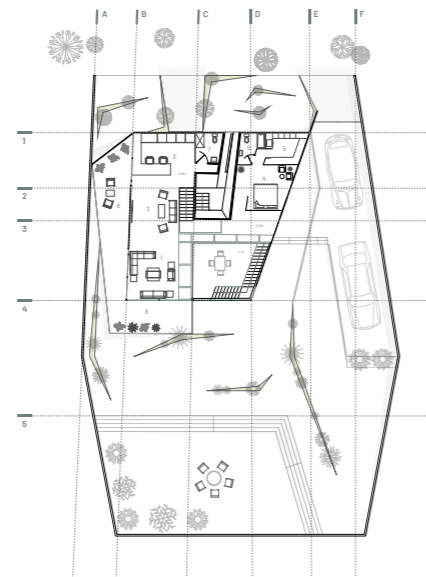
How can I use the updated **spatial program** and **innovative ideas** in building design?





Ground Floor

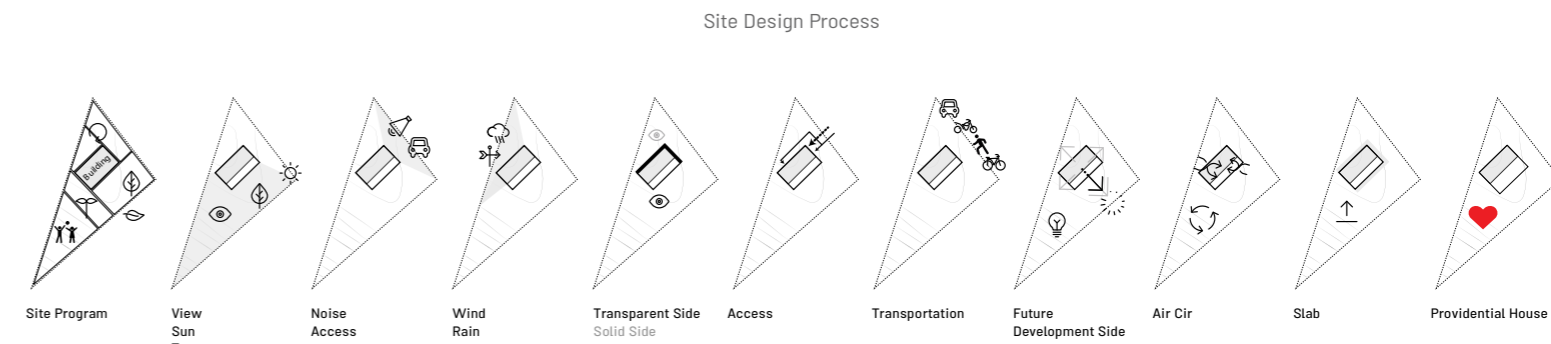
- | | | | |
|---------------|------------------|----------------|--------------------|
| 1 Entrance | 4 Kitchen | 7 Toilet | 10 Yard |
| 2 Living Room | 5 Master Bedroom | 8 Parking | 11 Gathering Space |
| 3 Dining Room | 6 Master Bath | 9 Private Yard | |



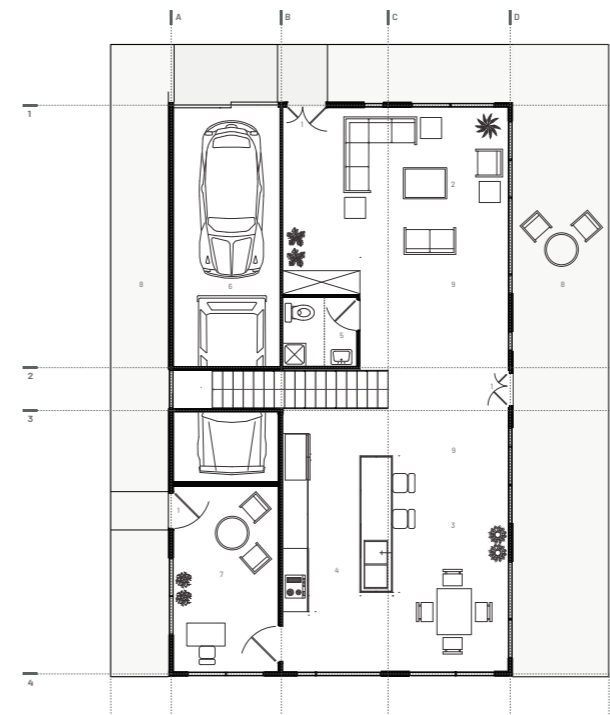
1st Floor

- | | | | |
|---------------|------------------|------------------|-----------|
| 1 Living Room | 3 Working Space | 5 Walk-in Closet | 7 Toilet |
| 2 TV Room | 4 Master Bedroom | 6 Master Bath | 8 Balcony |





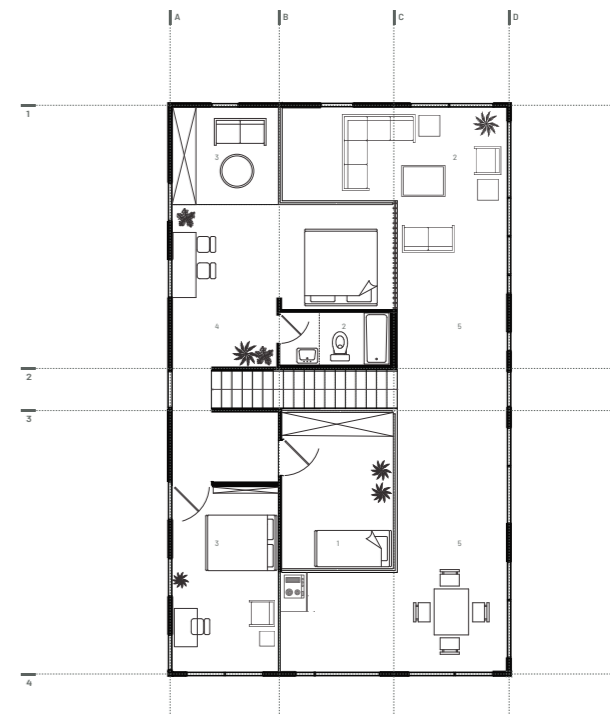
What factors in architectural design increase the **value** of the building?



0 | 1 | 5 | 10 |

Ground Floor

- 1 Entrance
- 2 Living Room
- 3 Dining Room
- 4 Kitchen
- 5 Bathroom
- 6 Parking
- 7 Office
- 8 Yard
- 9 Inbetween Space



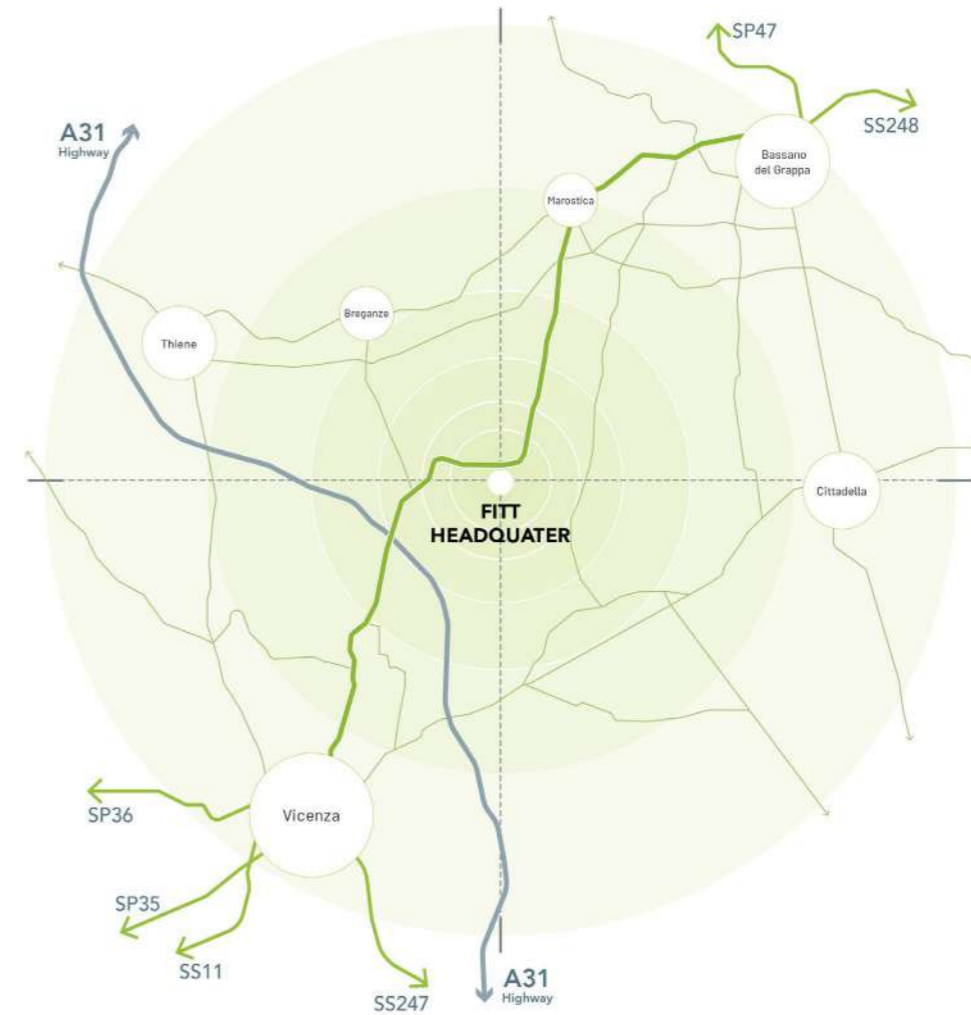
0 | 1 | 5 | 10 |

1st Floor

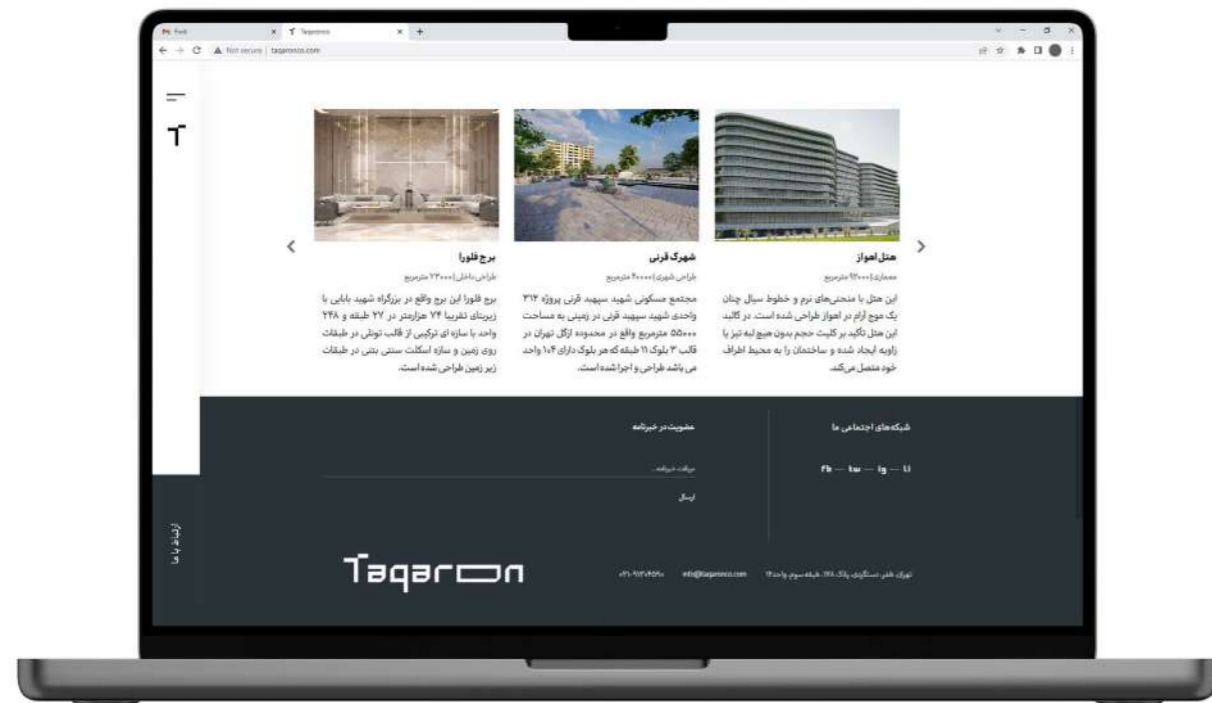
- 1 Bedroom
- 2 Master Bath
- 3 Conditional Space
- 4 Master Bedroom
- 5 Inbetween Space



What is the best **scenario** for building | space development?



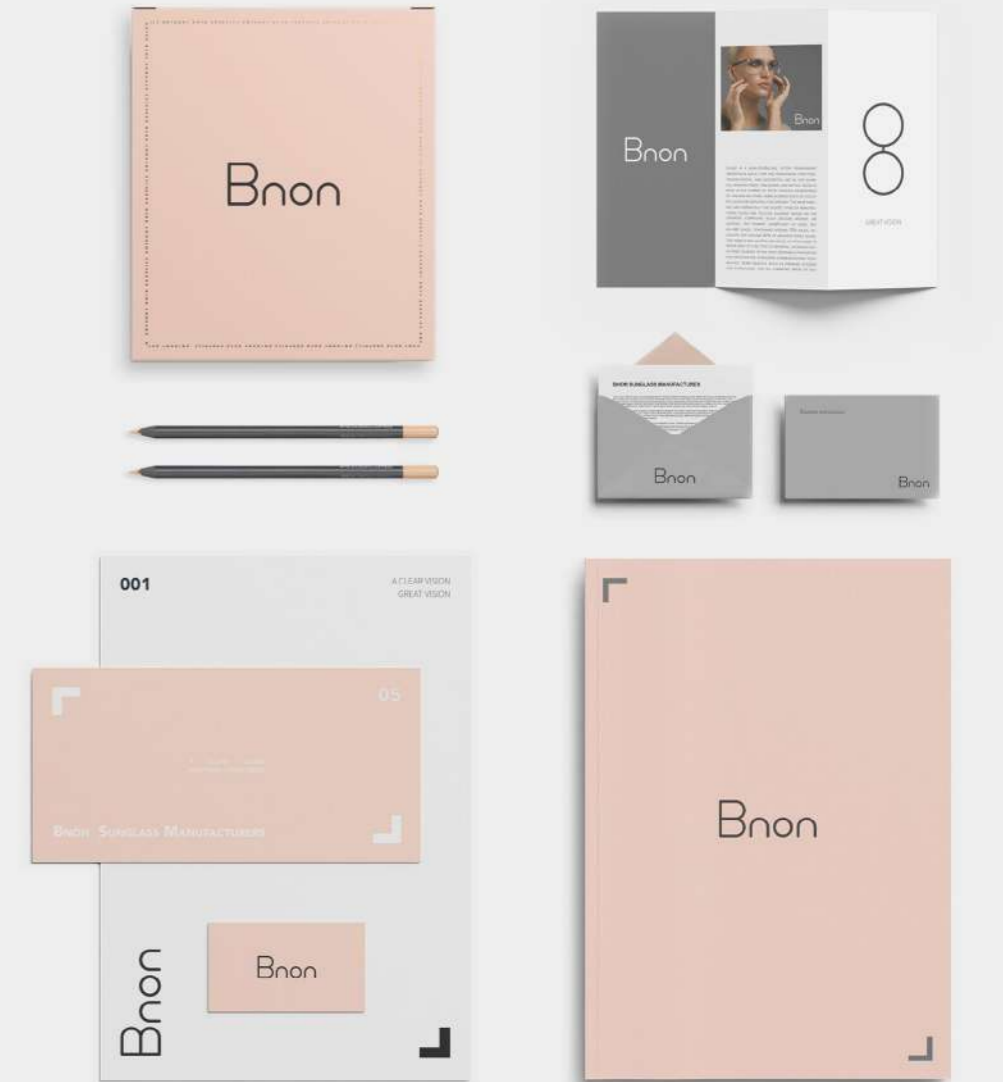
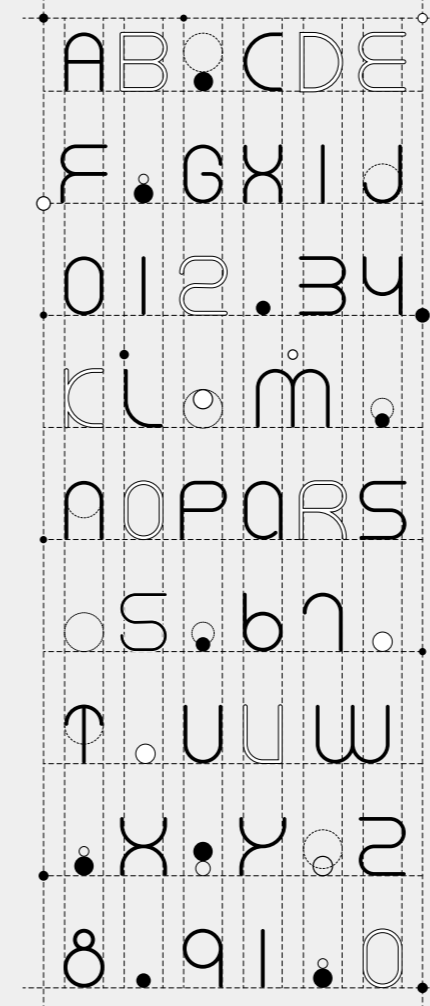
How does digital customer experience help the business | brand **value** grow?



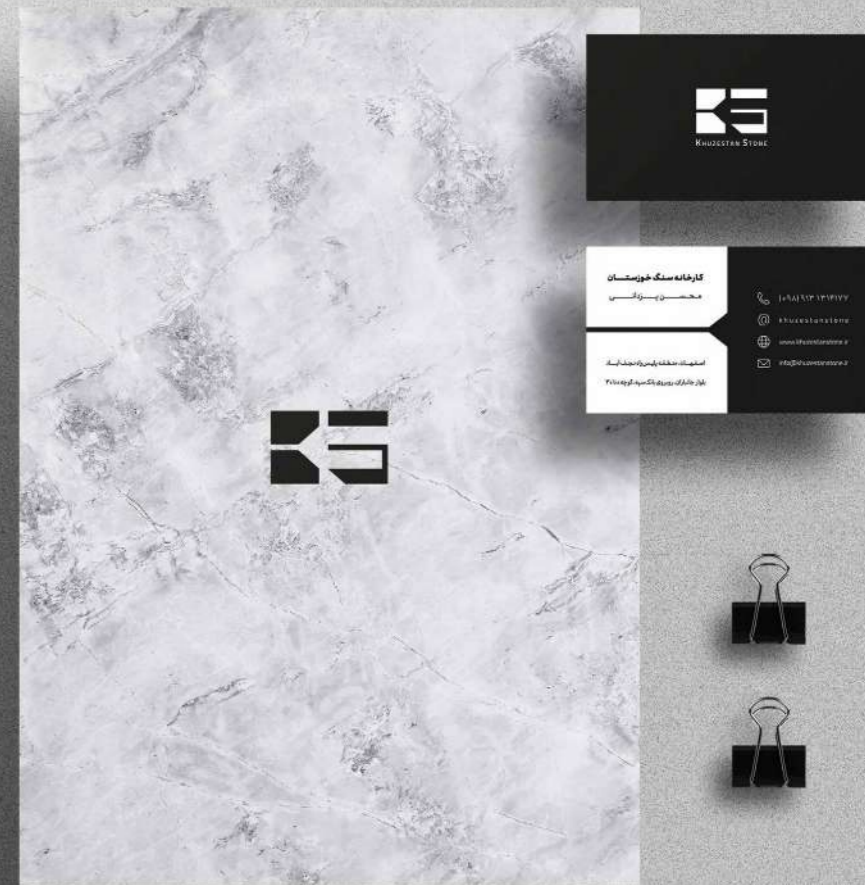


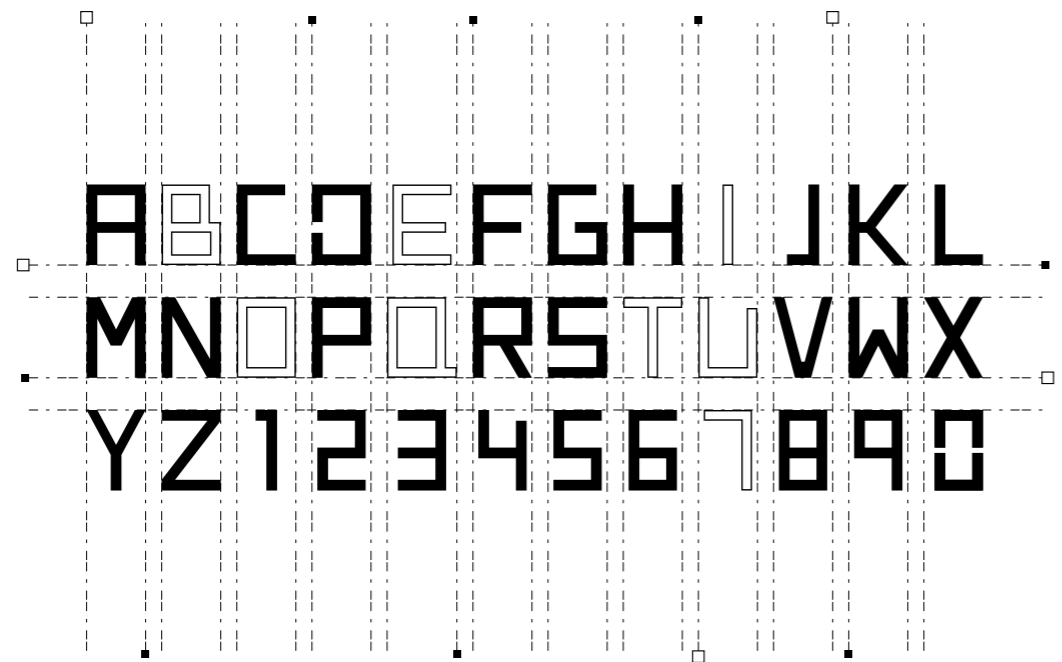
What is the perfect **name** for a company | brand | building | product?

How are business and product accurately reflected by **visual identity design**?









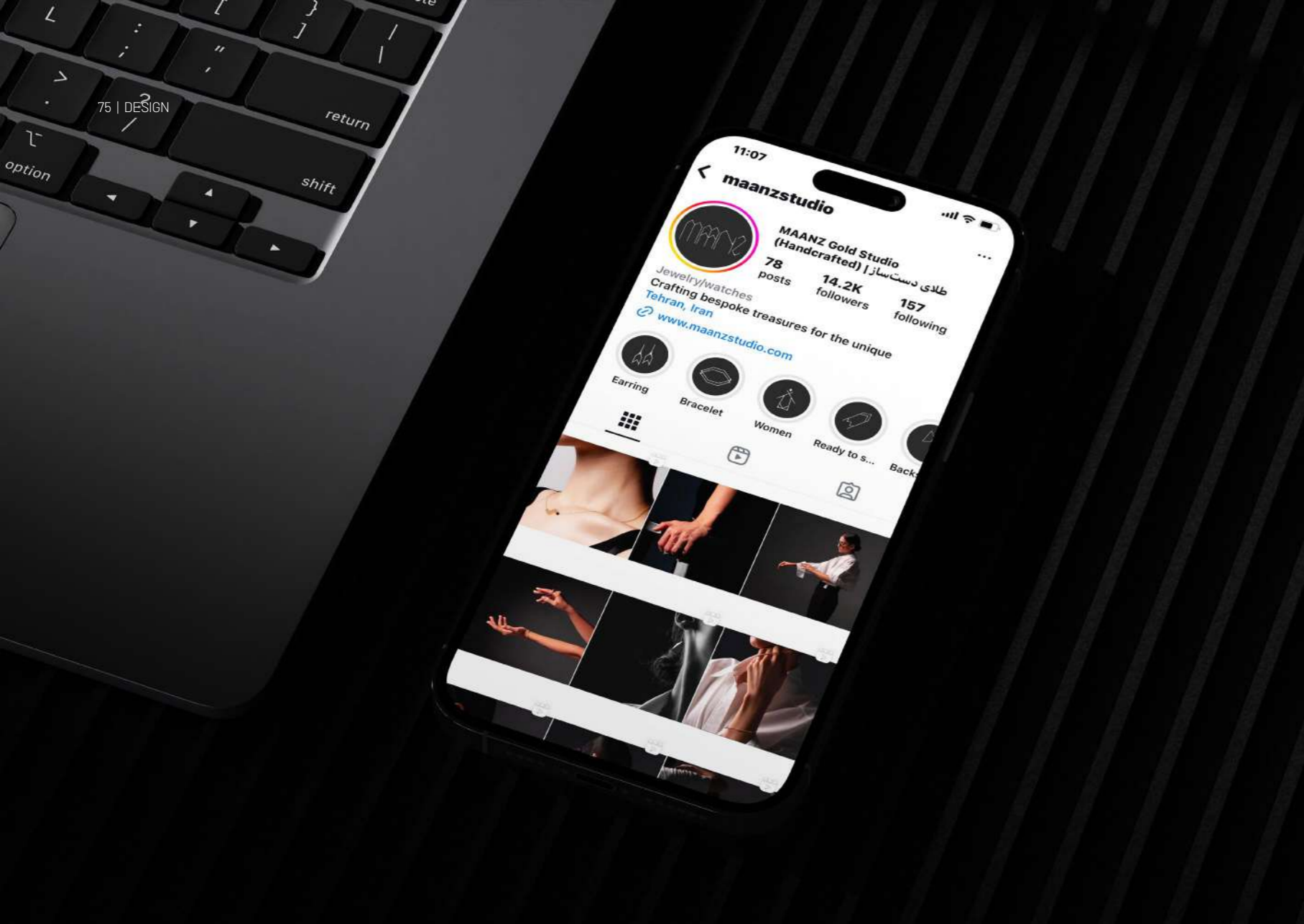
How can I create a **memorable** customer experience?

BOUTIQUE
APARTMENT 7





How to help the **growth** of business | product value by **visual identity design**?





When is the real need for branding **formed** and **evaluated**?

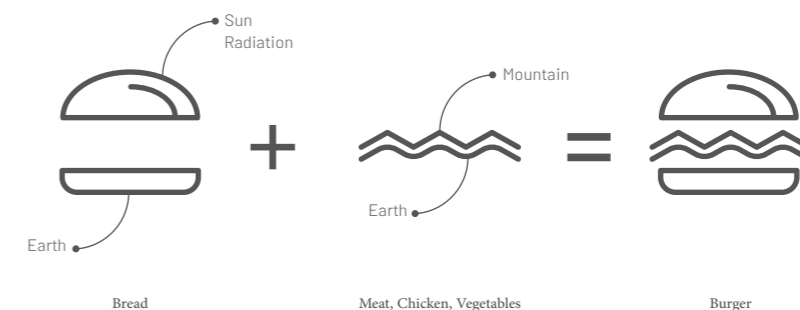


How are the business and product accurately reflected through **visual identity design**?



How is the best expression of **brand architecture** obtained?





CONTACTS

mineteams.com | Info@mineteams.com | +98 990 22 11 412

Tehran. Iran | [@Mineteams](#) | [Linkedin.com/mineteams](https://www.linkedin.com/company/mineteams) | [Instagram.com/mineteams](https://www.instagram.com/mineteams)



گروه رشد، توسعه کسب و کار

Growth Group, Business Development

April 2025

فروردین ۱۴۰۴

